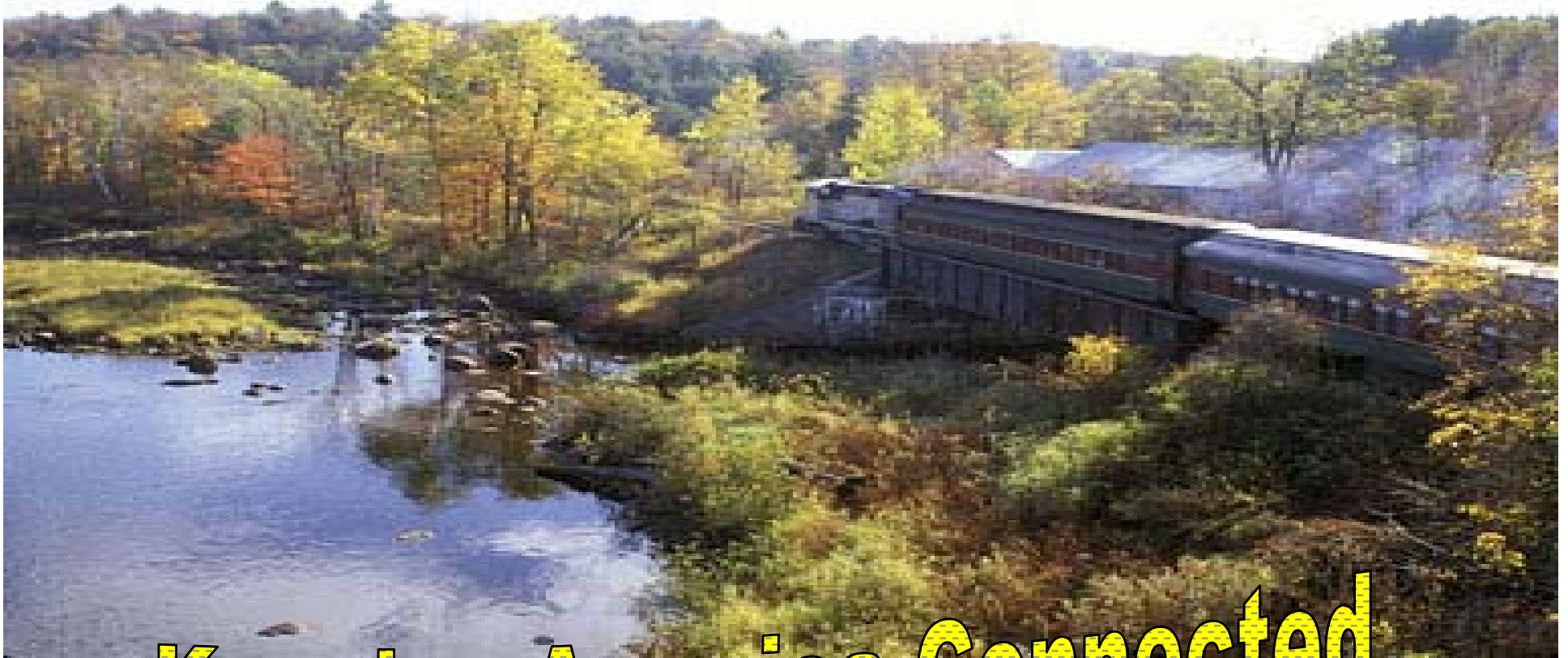




# Winkle's Wonders



**Keeping America Connected**

# Winkle's Wonders

Alicia Kenny

Kathryn Bernarde

Lauren Herring



Nicole DeMeo

Brittany Chiodo

# History

- ❖ **Railroads: a series of individual powered or un-powered vehicles linked together**
- ❖ **The first steam engine led to the establishment of the modern railroads and trains**
- ❖ **Railroads promoted industrialization, population growth, and suburbanization in the Hudson River Valley**
- ❖ **The railroads brought quick and convenient transportation for people in the Hudson River Valley**

# Industrialists of the Railroad Industry

## Thomas Cornell

- Built railroads on both sides of the Hudson River
- He took over most of the other railroad lines in the Hudson River Valley



<http://www.rondout.com/OurHistory.htm>

## John Stevens

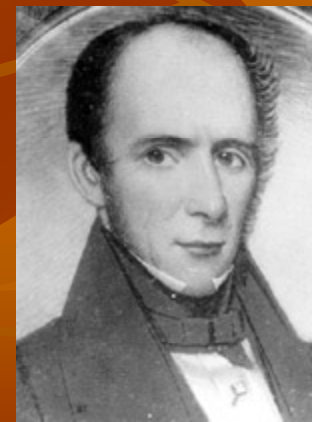
- Considered to be the father of American Railroads, was granted the first railroad charter that led to the first operational railroads
- In 1812, he advocated the building of a railroad instead of a canal across New York State from the Hudson River to Lake Erie
- He began a huge debate - it argued that railroads take up half of the travel time than boats along the Canal.



<http://images.google.com/images?q=Colonel+John+Stevens+&hl=en&btnG=Search+Images>

## John B. Jervis

- Built the first railroad in America
- Was Chief engineer for the Hudson Railway



<http://clrc.org/digital/jervis/jervisindex.htm>

# Key Sites

## Mohawk and Hudson Railroad

- Connected the Mohawk River at Schenectady to the Hudson River at Albany: both are cities along the Hudson River Valley
- It was named Albany and Schenectady Railroad in April of 1847.



## New York Central Railroad

- Consolidation of 10 remaining railroad companies throughout the HRV (May 1853)
- Running along the Hudson River, was the mainline to New York City
- Main stops include Chicago and Boston

## Penn Station

- Located in NYC and travels from Washington D.C through NY to Boston
- 2004: Named the biggest Amtrak Station in the U.S

## Grand Central

- Today: Largest train station in the World
- In 1994 it was taken over by Metro North
- Several stops including 120 stations
- The stations are distributed along 7 HRV counties: Dutchess, Putnam, Westchester, Bronx, New York (Manhattan), Rockland, and Orange



# Itinerary and Guidebook

## Day One:

10:00am Eveready Diner

11:30am Hyde Park Railroad Station

1:00pm Poughkeepsie Grand Hotel

2:00pm Soul Dog

3:00pm Vanderbilt Mansion

6:30pm Milanese Italian Restaurant

9:30pm Roosevelt Cinema

# Itinerary and Guidebook

## Eveready Diner

4184 Route 9 North  
Hyde Park, NY

- A fine American diner with a vast array of tasty food for a great price.



## Hyde Park Railroad Station

34 River Road  
Hyde Park, NY

- The station was built in 1914 replacing a prior station built on the same location in 1851. It was later restored and placed on the National Register of Historic Places after it was closed to railroad lines in 1958.



# Itinerary and Guidebook

## Poughkeepsie Grand Hotel

40 Civic Center Plaza  
Poughkeepsie, NY  
845-485-5300

- Located in the Hudson Valley in between New York City and Albany



## Soul Dog

107 Main Street  
Poughkeepsie, NY

- Poughkeepsie's famous home of interesting hot dog creations



# Itinerary and Guidebook

## Vanderbilt Mansion

Route 9

Hyde Park, NY

- The Historic home of Frederick W. Vanderbilt, acquired through the family's investments in the railroad industry of the area



## Milanese Italian Restaurant

115 Main Street

Poughkeepsie, NY

- Enjoy Authentic Italian Cuisine, right in the heart of historical Poughkeepsie



# Itinerary and Guidebook

## Day Two:

9:00am Friendly's

10:30am The Southeast Museum

12:30pm Dunkin Donuts

1:30pm Southeast Station

3:15pm Grand Central Terminal

6:00pm Carmine's Restaurant

9:00pm Penn Station to Poughkeepsie

11:00pm Poughkeepsie Grand Hotel

# Itinerary and Guidebook

## Southeast Museum

67 Main Street  
Brewster, NY

- Offers exhibits about the historic train systems running through New York

## Dunkin Donuts

Next to Southeast Station

- Allows guests to grab something they can eat on the train into New York City



Old Southeast Town Hall  
Southeast Museum Building



# Itinerary and Guidebook

## Southeast Station

Route 312

Brewster, NY

- Metro North Railroad that leads into Grand Central Terminal



## Grand Central Terminal

- Important connection to the Hudson River Valley full of shops, tours, restaurants and many others



# Itinerary and Guidebook



## Carmine's Restaurant

2450 Broadway  
New York, NY

- Classic Italian Cuisine in New York City located in the Upper West Side

## Penn Station



- The other major train station in New York City, allowing for the connection of the Hudson River Valley to other Parts of the Northeast. Guests are able to see the path from New York City to the Hudson River Valley

# Railroads Lesson Plan



Thomas the Tank Engine at North Creek”

<http://www.uhrr.com/events.html>

# General Information

- Grade Focus: 2nd Grade
- Topic/Field Trip: Upper Hudson River Railroad
- Location: Follows the Hudson River starting at the North Creek Station in New York (located between Saratoga Springs and Lake George in the Adirondack Region) going 9 miles down and ending at the starting position.
- Time Length: Approximately 3 hours (train trip 2 hours and 15 minutes)

## Objectives:

- To give students a fun and engaging experience to learn about the history and foundation of railroads.
- To provide a focus on different modes transportation in comparison to the railroad.
- To show students the importance of geography and location when it comes to building and arranging railroad development.
- In addition, to show students railroads as they directly relate to the Hudson River and the role this plays.
- Students will also become familiar with various railroad careers and the economic base.
- Lastly, they will hear Hudson River folklore music as they ride along, which brings some fun and excitement into the trip.

## History on the Railroad:

- This railroad was an important aspect of the social and industrial history of the Adirondacks.
- The line was built from Saratoga Springs to North Creek after the Civil War Era.
- The tracks were built by Dr. Thomas Durant who was also involved in building the Union Pacific Railroad and the eastern branch of the Transcontinental Railroad.
- Both Dr. Durant and his son were the first people to successfully bring tourists and travelers into the Adirondack Mountains through their hard work.
- The railroad was later extended 30 miles north to support the World War II effort.
- The railroad fell silent for about 10 years when Warren County decided to buy the track and run it as a tourist item to put it to use and build economic development for the residents both in and outside of the county.
- It is now popularized and considered a great tourist site and has many associations with schools and students to have a positive learning experience.

# Details on the Upper Hudson River Railroad

## Tour:

- The trip includes a 2 hour train trip with visits to the North Creek Depot Museum and a Freight House Gift Shop.
- The North Creek Depot Museum displays artifacts of this region's local history and other interesting facts students should be aware of.
- Throughout this trip, the conductor narrates the history of the area while the train runs on its course and students can capture the surroundings.
- The route runs 9 miles along the Hudson River and shows students the beauty of the Hudson and its surroundings including forests, mountains (views of the Adirondacks) and other habitats.
- Another fun fact is the railroad's Special Events Calendar. This designated certain times of year, for example, Halloween, Christmas, Summer, etc. for special activities appropriate to that time. (Example- during Halloween, an after-dark train ride takes place that is frightening and fun for students).

## Procedure:

- Students will take a bus to the North Creek Station a little before the departure time.
- Help students retrieve their tickets and get their things together. Since this is a longer trip, students should have a bagged lunch if they do not plan on buying food from the shops in the station area.
- Safety measures must be taken, therefore, students should have been previously assigned a chaperone; it is recommended to have around 6-8 students to each adult.
- • Once aboard, make sure students are seated in comfortable position and next to people that they get along with to maximize the experience.
- For about the first hour, students will hear the conductor speak about local history while students observe during the ride. The scenery during this time slot is valuable.

## Procedure Continued...

- As the train comes to a stop, an opportunity to visit the Riverside Station is in store, containing historic displays and a neighboring antique store and artist gallery. Riverside Park is also a major attraction in this area. This outdoor place allows kids to explore and be active while learning about a new environment. An iron bridge running over the Hudson River is also another attraction where anyone can take a stroll across and see the Hudson from the best possible view. According to the teacher and conductor, an appropriate amount of time will be given to spend here.
- Students will then re-board and return back to the North Creek Station. The trip back allows more time for the conductor to talk about history and the importance of railroads and their relationship to the Hudson River.
- Upon return, students, teachers, and chaperones visit the many historic exhibits in the North Creek Depot Museum and Freight House Gift shop.
- When students are satisfied, the bus will return the students back to their destination and from there, they can discuss what they liked about the trip. They can talk about which parts were their favorite and from there, a project or group assignment could be arranged to further discuss the importance this trip was for each student individually.

## Questions to keep in mind throughout and can later be asked during a reflection period on the trip:

- What is a railroad?
- How does the Hudson River help or not help this specific railroad?
- What job would you want to have on the railroad?
- How does a railroad compare to other modes of transportation?
- How did railroads help the economy?

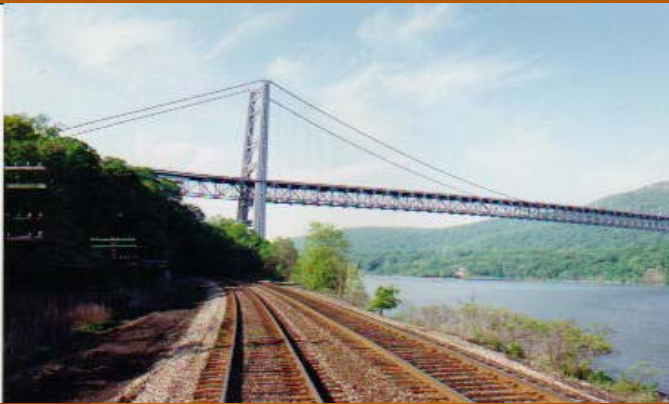
### Relationship to the New York State Standards:

- • School programs address standards in ELA and the Arts
- • This specific program has been approved by BOCES in Arts-in-Education and Exploratory Enrichment.

### Homepage to Visit for Further Details:

- (Fees, restaurants/lodging in the area, connection with schools, etc.)
- <http://www.uhrr.com/school.html>

# Conclusion



[http://www.railandcruisettravel.com/dinner\\_on\\_the\\_hudson.htm](http://www.railandcruisettravel.com/dinner_on_the_hudson.htm)

The railroad systems have a strong influence on the people of the Hudson River Valley as it connects them to jobs, cities, families, and homes along the Hudson River.



<http://www.hudsonvalleylodging.com/maps.htm>