

# The Mastodons Final Presentation on Greene County, NY



By: Kimberly Fusco,  
Eleanor Hampson,  
Kelley Hannifin, and  
Dorothy Hurley

# Greene County, New York



**Mountains of Beauty, History, Culture, and Tourism**

A short video clip about Greene County:  
[http://www.youtube.com/watch?v=j\\_Y6an6Eo0Y](http://www.youtube.com/watch?v=j_Y6an6Eo0Y)



# CHANGES TO THE MIDTERM

- ✦ The corrections we made to the midterm include fixing a few grammatical errors, making it clear that the links are embedded in the pictures, restating inaccurate information, revising route markers, and adding information to our overview. We realized that the Thomas Cole National Historic Site is Cedar Grove and added that to the final.

# THESIS

---

- ✘ The Catskill Mountains that sit to the west of the Hudson River in Greene County, NY, have inspired numerous works of art and literature, and today provides many opportunities for learning, tourism, scenic views, and historic appreciation.

# TABLE OF CONTENTS

---

- ✕ Lesson Plans.....Kim Fusco
- ✕ Guidebook Pages and Itinerary.....Dorothy Hurley & Eleanor Hampson
- ✕ Wayside Exhibit Panels.....Eleanor Hampson
- ✕ Highway Route Markers.....Kelley Hannifin



# LESSON PLANS



## ✖ Key Sites:

1. The Bronx Museum
2. Historic Catskill Point
3. Thomas Cole National Historic Site/Cedar Grove
4. Hudson-Athens Lighthouse
5. Pratt Rock Park
6. Kaaterskill Falls

- ✖ Models Being Used: Direct instruction, discovery learning, and inquiry
- ✖ Learning Intelligences Being Used: Visual, Kinesthetic, Auditory, and Howard Gardner

# STANDARDS AND MATERIALS

## Social Studies

- ✖ Standard 1: History of the United States and New York
- ✖ Standard 3: Geography

Overall Materials/ Instructional Resources:  
Warm jackets, comfortable shoes/hiking shoes, watercolors, colored pencils, markers, pens, paper, watercolor paper, lighthouse diagrams/blue prints, index cards with assignments and background information, props, costumes, poster board, handout with mini quiz, water, paintbrushes, handout with scavenger hunt, and a notebook.





# THE BRONCK MUSEUM

Students will be split into groups and taken on a guided tour of the housing complex. They will learn about the collections of art and Victorian memorabilia that is on display and about the 8 generations of families who lived in the houses. The activity will be based on the daily lives of the 19<sup>th</sup> century farmers in Greene County, New York. The focus will be on the daily life of common people in towns of the Hudson River Valley.

Procedure: 1.) Students take the guided tour of the housing complex 2.) Each student will get an index card with a role of a common Green County community member. 3.) Students will put on simple costumes: checkered shirts for farmers, hats for women, etc. and get props to get into character 4.) Students will act out chores from the daily life of the Greene County community members including pretending to farm, take care of farm animals, clean the bar, use the spinning machine, sew etc.

Closure: The people of Greene County in the 19<sup>th</sup> century had very different lives from today. Students will discuss what they liked or disliked about their job as a member of the community and talk about how different those chores are from what needs to be done in today's society.





# HISTORIC CATSKILL POINT

Students will walk around the plaza and park at Historic Catskill Point and get an idea of the area. Students will sit outside right on the Hudson River and be able to see the floating docks located at Historic Catskill Point. Here they will learn a lesson about industry along the Hudson River Valley, including the invention and use of steamboats, trains, pottery, shipbuilding, and other industries. The focus will be on industries in the Hudson River Valley.

**Closure:** The Hudson River provided many opportunities for industry, especially in Greene County. Students will be able to see that steamboats and railroads were very significant modes of transportation for goods and resources. Students will understand the importance of each industry through the group's posters.

**Procedure:** 1.) Students will walk around the Historic Catskill Point complex. They will see the Freight Master's Building and the Historic Warehouse, and how the grounds are now used today for weddings and special events 2.) Students will walk around the plaza and park, and sit on a bench facing the floating docks 3.) Students will hear a short lecture on the history of industry in the Hudson River Valley 4.) Students will get into groups, each representing one key industry in the Hudson River Valley 5.) Students will create a poster arguing that their industry is the most significant and important and why 6. Groups will present their arguments.



# THOMAS COLE NATIONAL HISTORIC SITE: CEDAR GROVE

This lesson will cover the Hudson River School and how the artists who studied there painted the scenery of the Hudson River Valley. Students will be able to express themselves by painting how they see the Hudson River Valley by using watercolors. Cedar Grove will provide the historic information about Thomas Cole and the Hudson River School to prepare students to create their own original painting of the landscapes of Greene County. The focus will be on the art and painters of the Hudson River Valley.

Closure: Students will be able to see the impact that the picturesque Catskill Mountains had on painters. They will see how the Hudson River School was established and how Thomas Cole was the most famous of the painters. The original painting will spark the student's creativity and get them interested in looking at the landscapes of Greene County in different ways.

Procedure: 1.) Students will take a guided tour of Cedar Grove and Thomas Cole's home. 2.) Students will see the film on Thomas Cole's life 3.) Students will take a mini quiz on the film 4.) While walking around the complex, students will see the landscape, including the flowers and trees strategically planted 5.) Students will sit through the lecture on the Hudson River School provided by the site employees 6.) Students will go on a short hike to see areas where specific Hudson River School Painters got their inspiration 7.) Using watercolors, students will paint their own landscape based on Greene County landscapes.





# HUDSON-ATHENS LIGHTHOUSE

Students will take a ferry to the lighthouse and go on a tour of the 8-room structure. Students will get insight into how the lighthouse was built and the life of the family who lived there. The focus will be on architecture the different styles of homes and rooms in the Hudson River Valley.

Procedure: 1. Students will take a ferry to the metal stairs, which takes visitors into the interior of the lighthouse 2. Students will be greeted by their tour guide and Emily Brunner, who lived in the lighthouse growing up 3. Students will take a guided tour of the lighthouse and hear information about the Brunner family and the development of towns in Greene County 4. Students will have an introduction to all of the rooms in the lighthouse and how they were built 5. After the tour, students will draw their own dream home using the architectural techniques they just hear about 6. Students will choose the town in Greene County they will want their house to be in based on the information provided about the towns.

Closure: Students will experience the Hudson-Athens lighthouse by going on a tour and actually speaking to a woman who grew up in it. They will see which types of architectural techniques that they liked the best from the lighthouse and apply their favorites to their own creation of a Green County house. Students will learn how towns developed in Greene County and will decide which characteristics of the towns appeal to them. They will see why the Hudson River Valley, Greene County specifically, was an attractive area for many people to live.



# PRATT ROCK PARK

Students will get to see “The First Mount Rushmore,” which is a series of stone carvings, located in Prattsville, New York. They will get a feeling of the historic significance of the carvings and the importance of Zadock Pratt. The focus will be on the government and significant people on Green County.

Procedure: 1.) Students will take a walk through the rocks and see all of the carvings 2.) Students will complete a scavenger hunt activity, looking for certain carvings and matching them with the meaning 3.) When the scavenger hunt is completed, the teacher will discuss the answers and why the carvings are so significant 4.) The students will hear a short lecture about Zadock Pratt, why the carvings were made, and the influence he and other significant figures had on the government and economy.



Closure: Through this activity students will understand Zadock Pratt's significance and influence on the towns in Greene County. They will see how an influential, wealthy family was involved in the government and economy. They will see the carvings of the stonecutters in the Pratt family and how they represent different important occurrences in Greene County history.



# KAATERSKILL FALLS

Students will be able to view Kaaterskill Falls from their hotel at Hunter Mountain, as well as from Kaaterskill High Peak. Students will not be able to hike the trail to get close to the falls because they are challenging for experienced hikers and way too dangerous to take young children to. From Kaaterskill High Peak students will see the two-drop waterfall and be inspired to write a story that incorporates the falls. The focus will be on literature in the Hudson River Valley.

Procedure: 1.) Students will walk on the trail to Kaaterskill High Peak to view Kaaterskill Falls 2.) The teacher will read *Rip Van Winkle* and explain how Kaaterskill Falls and other breathtaking views inspire many works of literature. 3.) Students will write their own short story that incorporates Kaaterskill Falls.



Closure: Students will understand how important the scenic views of the Hudson River Valley, Greene County in particular, were to many writers. They will see how Rip Van Winkle became an important icon for Greene County because he fell asleep in the Catskill Mountains. Students can put themselves in writer's shoes and see how easy it was for them to be inspired by the scenery of the county and incorporate many locations of the Hudson River Valley into their works.

# A GUIDE TO GREENE COUNTY....

## A 3-Day Weekend Itinerary Overview

### Day 1:

1.) Thomas Cole National Historic Site: Cedar Grove

**Lunch at La-Conca-D'Oro**

2.) Historic Catskill Point

3.) Kaaterskill Falls

Dinner at VanWinkle's Restaurant at the Kaatskill Mountain Club

**Spend night at the Kaatskill Mountain Club**

### Day 2:

4.) Pratt Rock

**Lunch at Athens Riverside Café**

5.) Hudson-Athens

6.) Bronck Museum

**Dinner at Blue Water Bistro**

### Day 3:

**Ski Day at Hunter Mountain!**



# DAY 1: FRIDAY

**Depart from George Washington Bridge, NYC at 7:30 AM.**



**Arrive at the Thomas Cole National Historic Site: Cedar Grove at 10:00 AM for a group tour.**

## **Driving Directions (2 hours and 8 minutes):**

1. Head **east** on **Interstate 95 Lower Level N**
2. Take exit **2** on the left for **Harlem River Dr** toward **FDR Dr/Manhattan**
3. Keep right at the fork to continue toward **Amsterdam Ave**
4. Turn right onto **Amsterdam Ave**
5. Turn right onto the **George Washington Bridge/I-95** ramp
6. Continue straight onto **Interstate 95 Upper Level S/George Washington Bridge**
7. Take the **NJ-4/I-95 S** exit toward **Hackensack/I-80/New Jersey Turnpike**
8. Take exit **72A** to merge onto **NJ-4 W** toward **Paramus**
9. Exit onto **NJ-17 N**
10. Merge onto **I-287 N/NJ-17 N** via the ramp on the left to **I-87/N Y. Thruway** Entering New York
11. Keep left at the fork, follow signs for **I-87 N/NY-17 N/Albany** and merge onto **I-87 N/NY-17 N** Continue to follow **I-87 N**
12. Take exit **21** toward **NY-23/Catskill/Cairo**
13. Continue straight.
14. Turn left onto **Co Rd 23B/Main St**
15. Turn left to merge onto **NY-23 E**
16. Turn right onto **Spring St**. Destination will be on the left.



# Greene County, NY

## Thomas Cole National Historic Site: Cedar Grove

<http://www.thomascole.org/>  
218 Spring Street,  
Catskill, NY

**Hours:** The Main House and Studio are open by guided tour. From the first weekend in May through the last weekend in October, tours are offered Thursday, Friday, Saturday & Sunday 10 am-4 pm. (Please note: Our last tour begins at 3 pm.) Tours are offered at other times by appointment.

**Tours:** Tours of the Main House begin approximately every hour on a first-come-first-served basis. Tours last about 50 minutes, and each tour is limited to approximately 12 people.

### Admissions:

Admission to the Main House and Old Studio is by guided tour and tickets can be purchased in the Visitor Center.

Tickets are \$9 per person during regular open hours. Seniors over 62 and students with ID are \$7 per person. Admission to the grounds is free of charge.



Group tours are welcome by advance appointment by calling  
518-943-7465

**Historical Description:** Cedar Grove is the home of famous American painter Thomas Cole, who is credited with launching the Hudson River School art movement.

**The Site:** At the Thomas Cole Historic Site, you can join a guided tour of Cole's home and studio, see a film about his art, stroll through the flower gardens, and enjoy the sweeping views of the Catskill Mountains.

**Directions:** Take the Taconic Parkway North to the Hudson Exit (Route 82 North) to Route 23 West. (Note: Route 82 also crosses the Taconic further south. Do not take Route 82 until you see the sign for Hudson.) Cross the Hudson River over The Rip Van Winkle Bridge. Make a left at the first light at the intersection of Route 23 and Route 385 (Spring Street). The Thomas Cole Historic Site is immediately on the left. (Use the shared driveway with Temple Israel.)



# DAY 1 (CONT.)

After the tour, drive to Catskill, NY for lunch at La-Conca D'Oro at 12:00PM (special reservation).



**Driving Directions from Cedar Grove to restaurant (2 minutes):**

1. Head south on **Spring St** toward **Sunset St**
2. Slight right onto **Thompson St**
3. Take the 3rd right onto **Main St**

Specialties:  
Veal Oscar  
Eggplant parmesan

All meals come with a  
house salad nicely  
prepared and hot crusty  
bread with seasoned  
butter

# DAY 1 (CONT.)

After lunch, you walk to the end of Main Street to visit the Historic Catskill Point. Arrive at 1:30 PM.



After exploring Catskill Point, you will drive to Kaaterskill Falls for a hike. Arrival 3:00 PM.

**Driving directions from Catskill Point to Kaaterskill Falls (18 minutes):**

1. Head south on Main St toward Church St
2. Turn right onto Bridge St
3. Continue onto New York 23A W



# Greene County, NY



## Historic Catskill Point

[http://www.greatnortherncatskills.com/files/public/THE\\_HISTORIC\\_CATSKILL\\_POINT\\_Procedures\\_2011.pdf](http://www.greatnortherncatskills.com/files/public/THE_HISTORIC_CATSKILL_POINT_Procedures_2011.pdf)  
Catskill, NY

**Hours:** open year round

To schedule a special event contact the Greene County Center for Tourism at:

Greene County Tourism  
700 Rt 23B, Leeds, NY 12451

(518) 943-3223  
(800) 355-CATS  
tourism@discovergreene.com



**Historical Description:** In days gone by, the Catskill Point served as the gateway to the Catskills with the Day Liner boats transporting visitors from New York City to this site. From here, visitors could venture further via railway to the many grand hotel resorts, like the Catskill Mountain House, which have been made famous by the Hudson River School of Painters.

**The Site:** The Historic Catskill Point is a 3 and 1/2 acre park that includes an open-air cobblestone plaza, a park overlooking the Hudson River and Catskill Creek, floating docks, and two buildings: the Freight Master's Building and the Historic Warehouse.

**Directions:**  
The park is located at the end of Main Street in Catskill, NY

# Greene County, NY



## Kaaterskill Falls

424 High Falls Road Extension, Catskill, NY 12414

For more information on visiting and events, call (518)299-3395, or go to the Pratt Museum in the center of town, on Main Street in Prattsville, NY.

**Kaaterskill Falls is open to the public daily.**

**Historical Description:** The falls are one of America's oldest tourist attractions, with it appearing in some of the most prominent books, essays, poems and paintings of the early 19th century.



**The Site:** Kaaterskill Falls is a two-drop waterfall located near in the eastern Catskill Mountains of New York, on the north side of Kaaterskill Clove, between the hamlets of Haines Falls and Palenville in Greene County. The dual cascades total 260 feet (79 m) in height, making it one of the higher waterfalls in New York, and one of the Eastern United States' tallest waterfalls.

**Directions:** For those not able to get too close to it, the falls can be seen in their entirety in the distance from the northern approach to the summit of Kaaterskill High Peak, across the clove, and sometimes even from the fire tower on Hunter Mountain. Otherwise, you can access the falls from High Road Extension.



# DAY 1 (CONT.)

**After your hike, you will drive to the Kaatskill Mountain Club, where you will be staying for the next two nights. It is adjacent to Hunter Mountain.**

**Driving directions to Kaatskill Mountain Club (50 minutes):**

- 1. Head northwest on New York 23A W toward Wingate Rd**
- 2. Turn left onto NY-42 S**
- 3. Turn left to stay on NY-42 S**
- 4. Turn right to stay on NY-42 S**
- 5. Slight right onto Beech Ridge Rd**
- 6. Take the 1st left to stay on Beech Ridge Rd**
- 7. Turn left onto NY-42 N**
- 8. Slight right onto Co Rd 6/Spruceton Rd**



# DAY 1 (CONT.)

**Dinner is at VanWinkle's Restaurant at the Kaatskill Mountain Club at 7:00 PM.**



**An optional special group snow tubing event will take place at 9:30 PM.**

## Specialties:

14oz Grilled Hereford  
Ribeye Steak

16oz Grilled Hereford  
Porterhouse Steak

Pan Roasted Duck Breast

Chicken Saltimbocca  
Roast Stuffed Chicken

Thai Chicken Stir-Fry



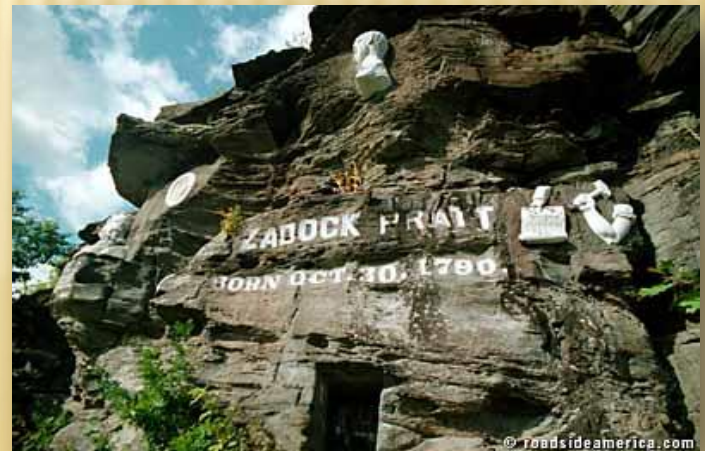
# DAY 2: SATURDAY

Breakfast is at the Market Place Food Court at the Hunter Lodge at 7:30 AM.

After breakfast, you will drive to Prattsville, NY to climb Pratt Rock. You will arrive at 9:00 AM.

Driving directions to Pratt Rock (27 minutes):

1. Head southwest on Co Rd 6/Spruceton Rd toward Auffarth Rd
2. Continue onto NY-42 N
3. Turn left to stay on NY-42 N
4. Turn right to stay on NY-42 N
5. Turn left onto New York 23A W
6. Continue straight onto NY-23 W



# Greene County, NY



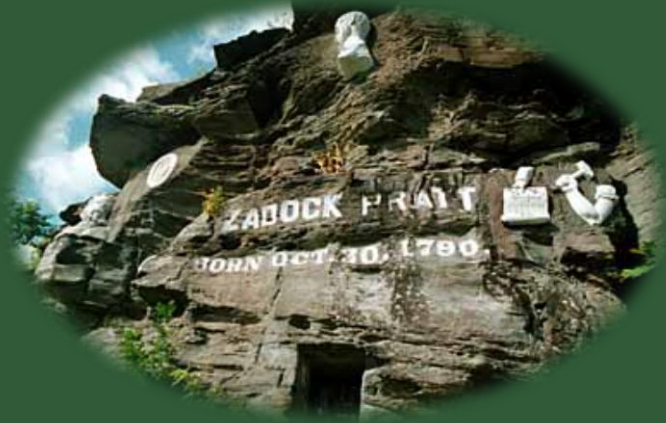
## Pratt Rock Park

<http://www.prattmuseum.com/archive/history/PrattRocks.htm>

Route 23 , Prattsville, NY 12468

For more information on visiting and events, call (518)299-3395, or go to the Pratt Museum in the center of town, on Main Street in Prattsville, NY.

Pratt Rock Park is open to the public every day, and there is no admission fee. The climb to the rocks is steep, and may be unfit for young children, but the path is clear and ascends is a series of gently graded inclines to the carved cliff wall 500 feet above the road. The stonecutters hacked chairs and benches out of rocks along the way, and a picnicking is permitted, so take your time and enjoy the ascent in a relaxed and thoughtful manner. The sculptures and the view of the valley make the short climb more than worth the effort.



**Historical Description:** Pratt Park, donated to the townspeople by Zaddock Pratt in 1843, encompasses this twenty-acre portion of steep hillside and sheer cliff face above. Originally called Monument Hill, the park was listed in 1992 on both the New York State Register of Historic Places and the National Register of Historic Places. The accepted legend that Pratt hired a jobless stonecutter to memorialize his own accomplishments in the grey sandstone cliffs above Prattsville – that is, in lieu of simply giving the man a handout – is probably *not true*, but such stories die hard. It is very likely that a number of skilled stonecutters worked on and off over a period of twenty-eight years to accomplish these distinctly separate and stylistically incongruous images.

**The Site:** This twenty acre portion of steep hillside and sheer cliff face memorializes the achievements of Zaddock Pratt, the most prominent tanner in the Northern Catskill Region during the early-to-mid nineteenth century.

**Directions:** Visit this site to see driving directions from multiple locations <http://www.prattmuseum.com/directions.html>

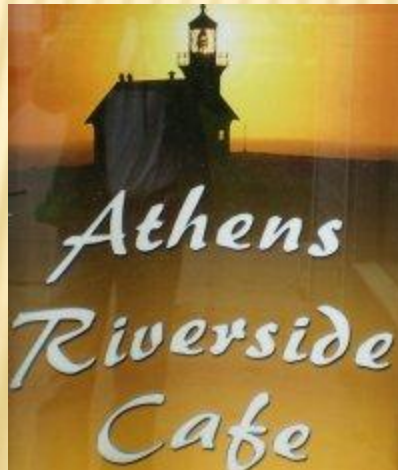


# DAY 2 (CONT.)

After visiting Pratt Rock Park, you will drive to the city of Athens, NY for lunch at Athens Riverside Café at 11:45 AM.

**Driving directions to Athens Riverside Cafe (47 minutes):**

1. Head **southeast** on NY-23 E
2. Take the 1st left to stay on NY-23 E
3. Turn left onto NY-385 N/Spring St  
Continue to follow NY-385 N
4. Turn right onto 3rd St



Specialties:

Specialty  
sandwiches

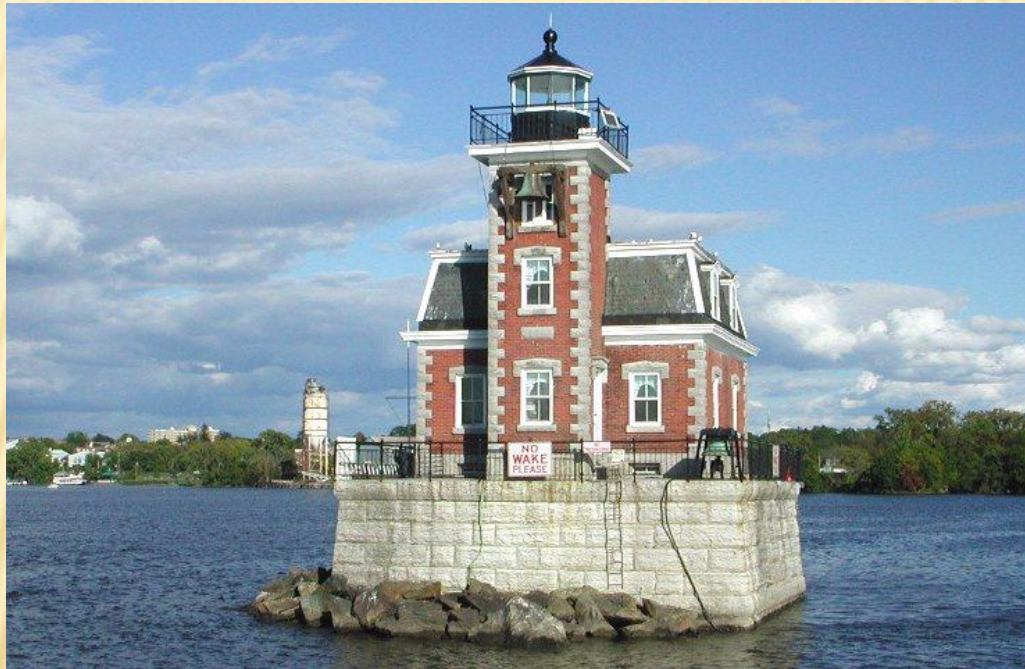
Burgers

Salads

Homemade soups

## DAY 2 (CONT.)

After lunch, you will walk to Athens Village Riverfront Park to take a boat tour of the Hudson-Athens Lighthouse at 1:30 PM.



After the boat tour you will drive to Coxsackie, NY for a 3:30 PM tour of the Bronck Museum.



# Greene County, NY



## Hudson-Athens Lighthouse

<http://hudsonathenslighthouse.org/>

POSTAL ADDRESS:

Hudson-Athens Lighthouse Preservation Society  
Post Office Box 145 Athens, New York 12015

Tours of the Hudson-Athens Lighthouse are available the second Saturdays of July, August, September and October.

Tours depart from Henry Hudson Riverfront Park in Hudson at 11, 12, 1 and 2. Tours depart Athens Village Riverfront Park at 11:30, 12:30, 1:30, and 2:30.

Reservations are suggested and can be made by calling Hudson Cruises at (518) 822- 1014.

The cost is \$20 for adults, and \$10 for children under 12 years of age. Members are half price.



**Historical Description:** In the late 1880's, hazards created by the Middle Ground Flats opposite the City of Hudson made navigation of the Hudson river at that point extremely risky for the busy shipping route. After much petitioning to the Congress of the United States, a survey was completed and an appropriation of \$35,000.00 was approved by Congress in 1872 to build the Hudson City Lighthouse now known as the Hudson-Athens Lighthouse. Construction was begun in early 1873, and the lighthouse was completed and put into operation on November 14, 1874. The facility served as a manned lighthouse until the 1950s at which time the lighthouse was automated and a named facility was no longer a necessity. Today, the Lighthouse still serves an aid to navigation, guiding ships safely around the Middle Ground Flats.

**The Site:** The eight room structure is located on the Hudson River and includes a kitchen, dining room, four bedrooms, lantern room, and fog bell.

**Directions:** The lighthouse is located on the Hudson River between the city of Hudson and the town of Athens. Call for further directions on how to get to sites where the boat tours leave.

# DAY 2 (CONT.)

## Driving directions to the Bronck Museum (12 minutes):

1. Head **northwest** on **3rd St** toward **1st Alley**
2. Take the 2nd right onto **S Washington St**
3. Take the 1st left onto **2nd St**
4. Turn right onto **County Rd 28/Schoharie Turnpike**
5. Turn right onto **US-9W N** Destination will be on the left



After the tour, you will drive to your dinner reservations at **Blue Water Bistro** in **Coxsackie, NY** at **5:30 PM**

## Driving directions to Blue Water Bistro (7 minutes):

1. Head **northeast** on **US-9W N** toward **Peter Bronk Rd**
2. Turn right onto **NY-385 S**
3. Continue onto **Mansion St**
4. Slight left onto **Reed St** Destination will be on the right





# Greene County, NY



## The Bronck Museum

<http://www.gchistory.org/bronckmuseum.html>

90 County Route 42

Coxsackie, NY 12051

Open Memorial Day Weekend through October 15

### Hours:

Wednesday-Friday: 12PM-4PM

Saturday: 10AM-4PM

Sunday: 1PM-4PM

Memorial Day, Labor Day and Columbus Day 10AM-4PM

(Last tour at 3:30 daily )

### Admissions

Adults: \$5.00

Youth 12-15: \$3.00

Children 5-11: \$2.00

Children under 5: Free

GCHS Members: Free

Notes: Special and group tour arrangements can be made upon request at 518-731-6490



**Historical Description:** The Bronck Museum complex includes the eleven remaining structures that once comprised the Bronck family farm. The land was purchased from the local Mohican tribe in 1662 by Pieter Bronck, a Swede and his Dutch wife Helletje Jans. Pieter built the first dwelling on the farm in 1663. By the early 1800's the farm had become the single most valuable property in the county. During the nineteenth century as both the Bronck family and their farm prospered, additional barns and farm structures were built. The family maintained continuous ownership of the farm for 276 years passing it from parent to child, for eight generations.

**The Site:** The Bronck Museum is a collection of 11 buildings once part of the Bronck family farm that is now owned by the Greene County Historical Society. It is considered the "Hudson Valley's Oldest Home" and during the nineteenth century it was the most valuable property in the Hudson River Valley.

### Directions:

From Thruway Exit 21B, Coxsackie: South on 9W 3¾ miles; at RED BARN turn right on Pieter Bronck Road.

From Traffic Light at 9W and 81: South on 9W 1½ miles; at RED BARN turn right on Pieter Bronck Road.

From Catskill: North on 9W; then left on County Rt. 42

# DAY 2 AND DAY 3

After dinner you will return the Kaatskill Mountain Club for a relaxing evening.

**Directions back to Kaatskill Mountain Club (1 hour and 24 minutes):**

1. Head **west** on **Reed St** toward **Ely St**
2. Continue onto **Mansion St**
3. Turn left onto **US-9W S**
4. Continue onto **New York 23A W**
5. Turn left onto **NY-42 S**
6. Turn left to stay on **NY-42 S**
7. Turn right to stay on **NY-42 S**
8. Slight right onto **Beech Ridge Rd**
9. Take the 1st left to stay on **Beech Ridge Rd**
10. Turn left onto **NY-42 N**
11. Slight right onto **Co Rd 6/Spruceton Rd**

**Day 3: Sunday**

**Ski Day!!**





# DIRECTIONS HOME

**Directions from Hunter Mountain back to the George Washington Bridge (2 hours and 41 minutes):**

1. Head **southwest** on **Co Rd 6/Spruceton Rd** toward **Auffarth Rd**
2. Continue onto **NY-42 N**
3. Sharp left onto **Beech Ridge Rd**
4. Take the 1st left to stay on **Beech Ridge Rd**
5. Turn right onto **NY-42 S**
6. Continue onto **NY-28 E**
7. At the traffic circle, take the **3rd** exit **Partial toll road**
8. Keep left at the fork, follow signs for **I-87 S/New York City** and merge onto **I-87 S** **Partial toll road**
9. Take exit **15** for **NY-17 S/I-287 S** toward **New Jersey**
10. Merge onto **I-287 S** **Entering New Jersey**
11. Take exit **59** to merge onto **NJ-208 S** toward **Franklin Lakes**
12. Continue onto **NJ-4 E**
13. Take the **I-95 N** exit on the left toward **G W Bridge/New York City**
14. Merge onto **Interstate 95 Lower Level N**



# The Bronck Museum

Located in Coxsackie, NY, the Bronck Museum is a collection of 11 buildings once part of the Bronck family farm that is now owned by the Greene County Historical Society. It is considered the "Hudson Valley's Oldest Home" and during the nineteenth century it was the most valuable property in the Hudson River Valley.



Named for the American Revolutionary War Veteran, Nathanael Greene, Greene County is located to the west of the beautiful Hudson River. Greene County has produced many celebrated works of art and literature, and is a great place for outdoor activities, scenic views, vacationing, and exploration of history because of its location in the Catskill Mountains and Hudson River Valley.



# Historic Catskill Point

This three and a half acre park is located where the Hudson River meets the Catskill Creek. The point is the site of two historical industrial sites—the Freight Master's Building and the Historic Warehouse. Today, these two restored nineteenth century buildings are used for private functions.



Named for the American Revolutionary War Veteran, Nathanael Greene, Greene County is located to the west of the beautiful Hudson River. Greene County has produced many celebrated works of art and literature, and is a great place for outdoor activities, scenic views, vacationing, and exploration of history because of its location in the Catskill Mountains and Hudson River Valley.



# Thomas Cole National Historic Site: Cedar Grove

The Thomas Cole National Historic Site, Cedar Grove, is located in the historic town of Catskill, NY. It is the home of famous American painter Thomas Cole, who is credited with launching the Hudson River School art movement. At the Thomas Cole Historic Site you can join a guided tour of Cole's home and studio, see a film about his art, stroll through the flower gardens, and enjoy the sweeping views of the Catskill Mountains.



Named for the American Revolutionary War Veteran, Nathanael Greene, Greene County is located to the west of the beautiful Hudson River. Greene County has produced many celebrated works of art and literature, and is a great place for outdoor activities, scenic views, vacationing, and exploration of history because of its location in the Catskill Mountains and Hudson River Valley.



# Hudson-Athens Lighthouse

Located in the middle of the Hudson River between the village of Athens and the city of Hudson, this eight room structure was completed in 1874. It was built to guide ships around the difficult to navigate Middle Ground Flats. Since its opening, the Hudson-Athens Lighthouse has been operated and maintained by the United States Coast Guard.



Named for the American Revolutionary War Veteran, Nathanael Greene, Greene County is located to the west of the beautiful Hudson River. Greene County has produced many celebrated works of art and literature, and is a great place for outdoor activities, scenic views, vacationing, and exploration of history because of its location in the Catskill Mountains and Hudson River Valley.



# Pratt Rock Park

Located in Prattsville, NY, this twenty acre portion of steep hillside and sheer cliff face memorializes the achievements of Zaddock Pratt, the most prominent tanner in the Northern Catskill Region during the early-to-mid nineteenth century. Ripley's *Believe It or Not* once called it, "New York's Mount Rushmore." In 1992, it was listed on the U.S. National Register of Historic Places.



Named for the American Revolutionary War Veteran, Nathanael Greene, Greene County is located to the west of the beautiful Hudson River. Greene County has produced many celebrated works of art and literature, and is a great place for outdoor activities, scenic views, vacationing, and exploration of history because of its location in the Catskill Mountains and Hudson River Valley.



# Kaaterskill Falls

The tallest cascading waterfall in New York State, Kaaterskill Falls' dual cascade reaches 260 feet in height. The falls earned particular fame when the story *Rip Van Winkle* by Washington Irving became popular.



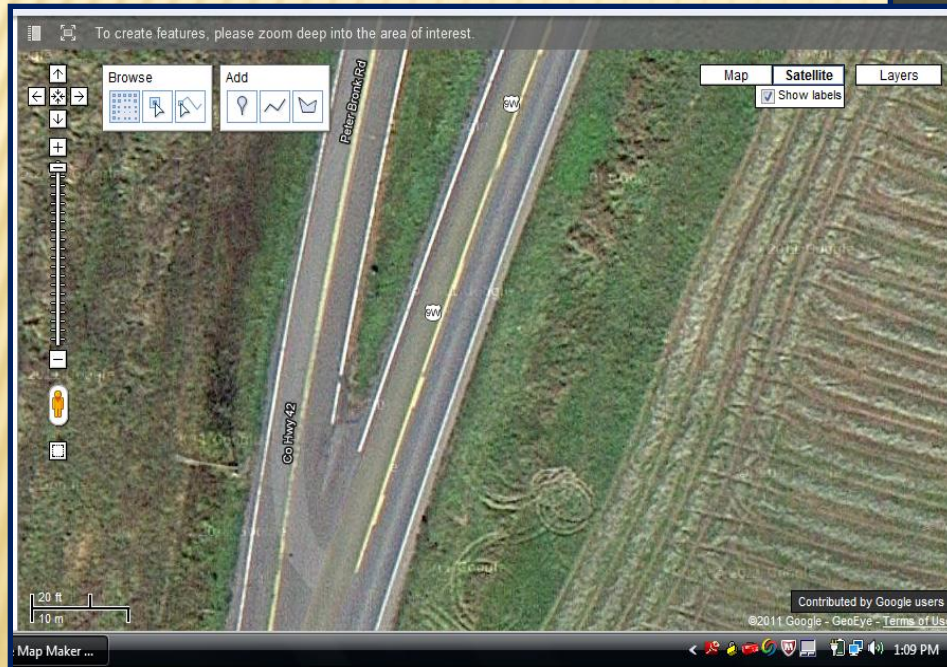
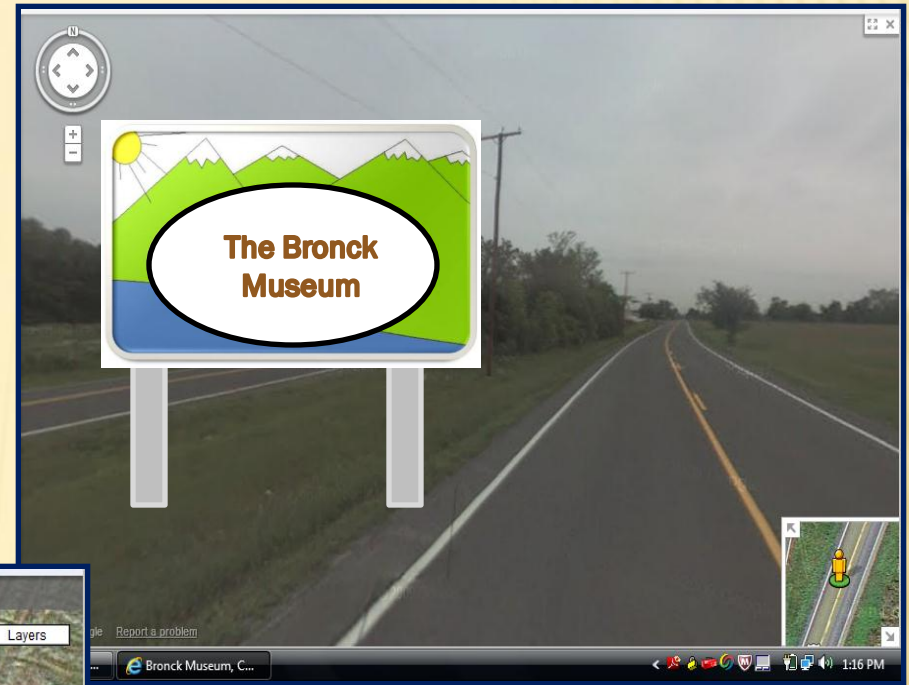
Named for the American Revolutionary War Veteran, Nathanael Greene, Greene County is located to the west of the beautiful Hudson River. Greene County has produced many celebrated works of art and literature, and is a great place for outdoor activities, scenic views, vacationing, and exploration of history because of its location in the Catskill Mountains and Hudson River Valley.

# EXAMPLE OF HIGHWAY ROUTE MARKER



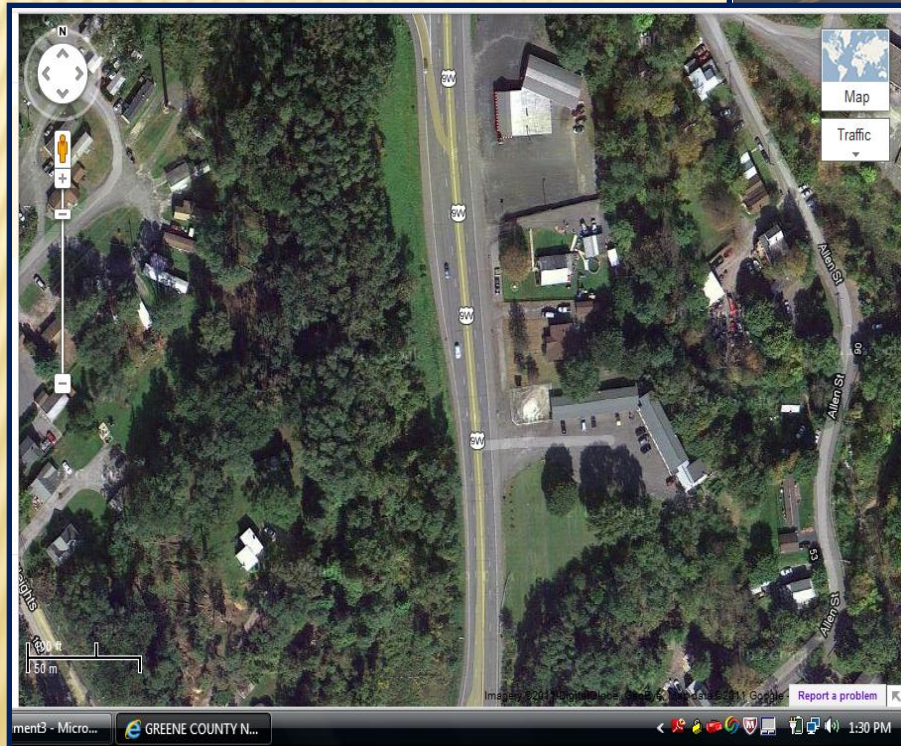


# The Bronck Museum



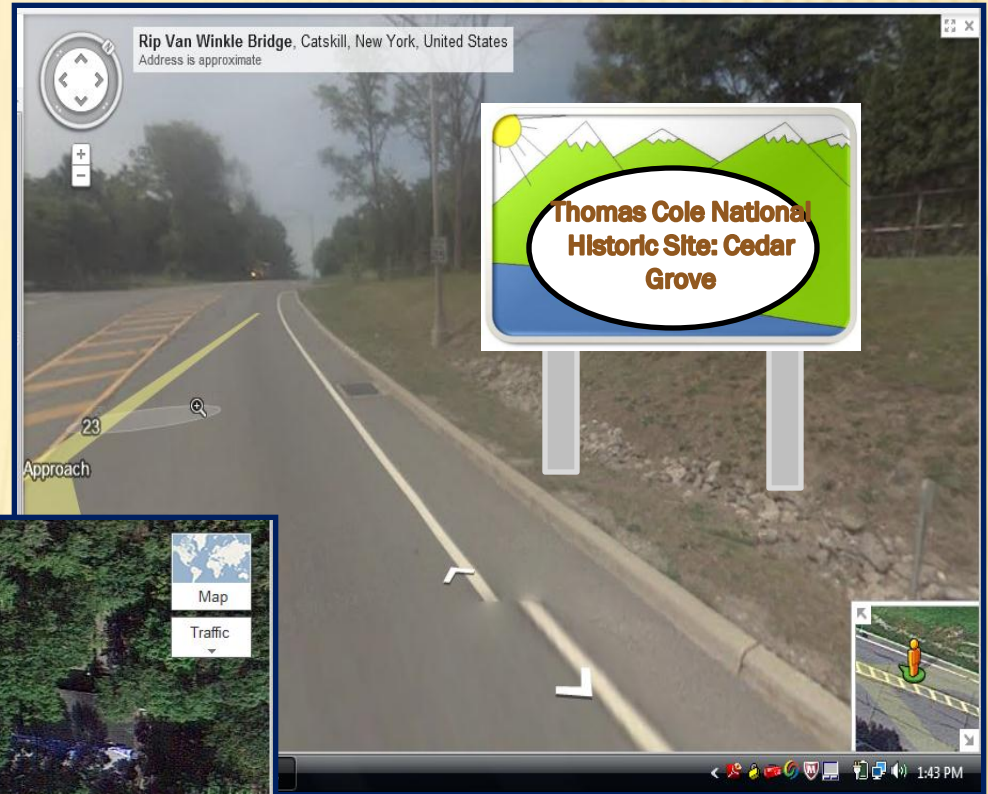


# Historic Catskill Point



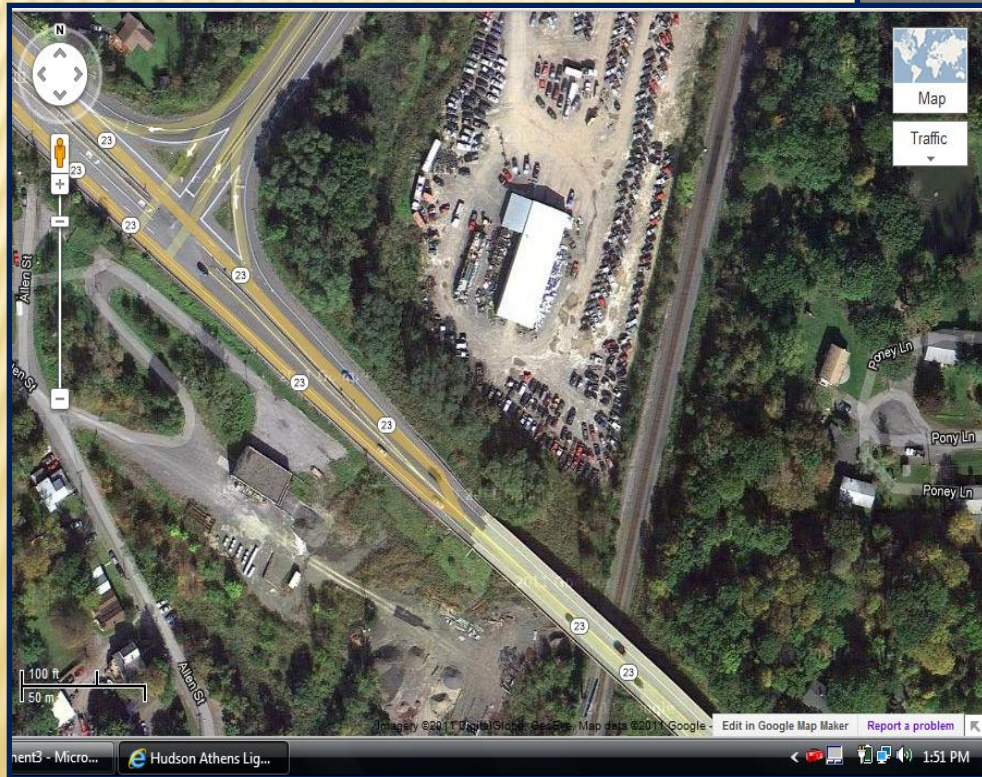


# Thomas Cole National Historic Site: Cedar Grove





# Hudson-Athens Lighthouse



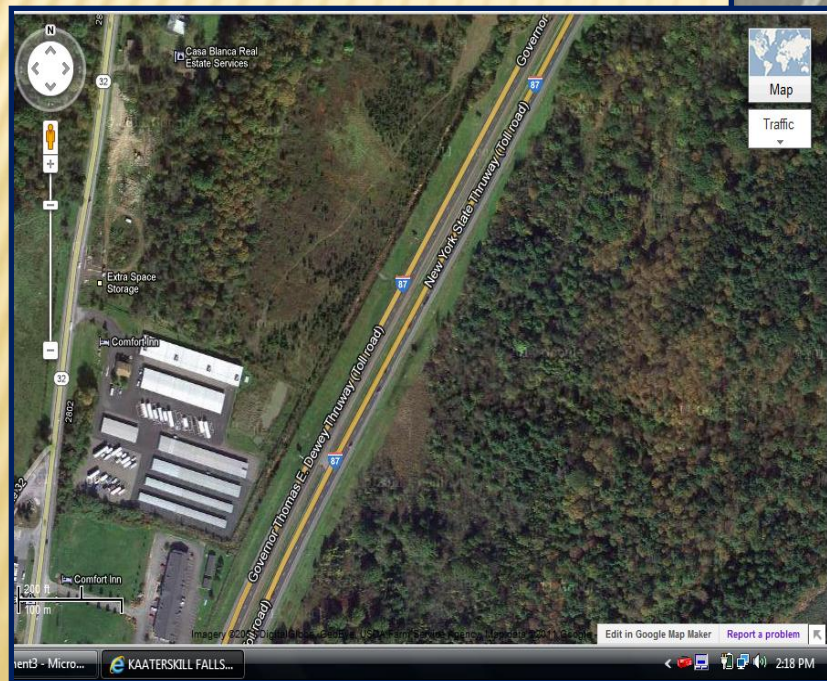


# Pratt Rock Park





# Kaaterskill Falls





# WEBSITES ABOUT GREENE COUNTY

- ✕ <http://www.gchistory.org/>
- ✕ <http://www.vedderlibrary.org/vrlmus.htm>
- ✕ <http://www.hudsonvalleyweddings.com/goods/inserts/the-historic-catskill-point.htm>
- ✕ <http://www.thomascole.org/>
- ✕ <http://www.hudsonathenslighthouse.org/>
- ✕ <http://prattmuseum.com/pratt-rock-park.html>
- ✕ [http://www.localhikes.com/Hikes/kaaterskill\\_0000.asp](http://www.localhikes.com/Hikes/kaaterskill_0000.asp)
- ✕ <http://www.greenegovernment.com/>
- ✕ <http://www.greatnortherncatskills.com/>
- ✕ <http://www.greenegovernment.com/discovergreene/index.htm>

# CONCLUSION

---

Greene County, NY has proven itself to be an area rich in culture and history, as well as a place that is ideal for tourism.



Come visit  
Greene County!