

The Bear Mountain Bears



Raaarr Team 5!

RAAAR!!!

*Experience the beauty, culture, and history
that Dutchess County has to offer!
Got Dutchess?*

[YouTube video on Dutchess County](#)

Thesis

Dutchess County is an area rich in history and influence, with strong ties to Revolutionary America- vital to the historic, industrial, and cultural development of New York and the United States.

CHANGES SINCE MIDTERM

- Through the midterm we learned how Dutchess County sites played important roles in the Revolution and development of America, the demographics and populations evolved over time, and that it has a vibrant history, which make this county so unique.
- With this knowledge, we further studied and advanced our knowledge about Dutchess County by researching each of our key sites and surrounding area in more detail. This allowed us to create a guidebook and itinerary, lesson plans for each site, and elaborate on our wayside exhibits and highway route markers.

Table of Contents

- *Lesson Plans (Alisha La Hogue)*
- *Guidebook and Itinerary*
(Christina Ritter and Jacob Gaglio)
- *Highway Route Markers (Angela Wrigley)*
- *Wayside Exhibits (Kerry Caputo)*
- *Website links for Dutchess County*



LESSON PLANS

ALISHA LA HOGUE



Students will have the opportunity to participate in various activities at each of the 6 sites to enhance their learning and experience on the trips. After all the trips students will have to do a larger project on their overall experience and knowledge of Dutchess County.

This group project will be in the form of a travel pamphlet, video/ commercial, poster board presentation, or a skit. They will include photographs and sketches that they took on the trip and information that they learned.

ACTIVITIES AT EACH SITE

Mount Beacon Incline Railway: While tourists no longer have the opportunity to visit the top of Mount Beacon with the incline railway, students will be painting a picture of the landscape that they see from the bottom of the site or if they want to use their imagination, pretend they were at the top of the Railway and paint a watercolor picture of what they imagine tourists would have seen.



Mount Gulian: Here students will have the opportunity to take part in a lesson on how to march and fight as a Patriot Soldier. Students will train with a member of the 1st New York Regiment and learn the Manual of Arms, written by General von Steuben. Recruits will be issued wooden muskets and will experience what it was like to be a Patriot Soldier in the army.

Madam Brett Homestead: After the tour of the Homestead, with the help of adults/professionals students will actually cook a meal that would have been eaten during the 1700s-1800s. A possible meal would be meat stew with potatoes. Students will be able to taste their cooking and see how much effort was needed to cook a meal during the time period of Madam Brett's family.



ACTIVITIES AT EACH SITE CONTINUED

FDR and Presidential Library.

Students will take notes of any interesting and important facts about FDR and his wife Eleanor including their personal life, contributions to America, work, and about their home in Springwood. Students will create a presentation about the lives of the couple and their home in Springwood. This can be a 3 page biography, a poster board presentation, PowerPoint, or even video. The more creative the better!



Van Wyck Homestead. Students will choose one of the Artifacts of the Rev War Fishkill Supply Depot, Hudson Valley portraits or artifacts of local history that they think is interesting and sketch the item with a brief description of what it is.

Vanderbilt Mansion. The first activity will take place while touring the inside of the mansion. Students will be assigned various working roles that would have been seen at the mansion. Students will learn what types of duty they were expected to complete for their role and do a role playing activity. The second activity requires students to complete a scavenger hunt and take pictures of various plants and trees found on the Vanderbilt grounds.



The background of the image is a scenic landscape of a lake at sunset or sunrise. The sky is a warm, golden-yellow color, and the water reflects this light. In the distance, there are hills and some small buildings. A large, dark blue star is positioned in the bottom right corner of the image. The text "Your Guide to" is written in a black, serif font, and "Dutchess County" is written in a larger, bold, black, serif font.

Your Guide to

Dutchess County

Excursion Overview

Day 1

*Destination 1: Mount Beacon Incline
Railway*

Lunch: Café Amarcord

Destination 2: Mount Gulian

Destination 3: Madame Brett Homestead

Dinner: Brother's Trattoria

End Day 1 at Hilton Garden Inn

Day 2

*Destination 4: Van Wyck Homestead
Museum*

Lunch: Hudson's Ribs & Fish

*Destination 5: FDR Home & Presidential
Library*

Destination 6: Vanderbilt Mansion

Dinner: Eveready Diner

Destination 1: Mount Beacon Incline Railway

Directions Coming from the George Washington Bridge, NYC:

(travel time: approx 75 minutes)

Take Upper Level of George Washington Bridge New Jersey bound.
Take first right off Bridge to Palisades Parkway North.

Take Palisades Parkway North to end. At the traffic circle,
take 6 East/202 across Bear Mountain Bridge.



Take the first left onto Route 9D North. Continue 15.98 miles north on 9D to the intersection with
Howland Avenue.

Gateway to Mount Beacon Park is located at this intersection

Arrive at 9 a.m.



11:45 a.m- Leave the Mount Beacon Incline Railway and head downtown to Café Amarcord for lunch

Café Amarcord

276 Main Street Beacon, NY 12508-3015

Hours of Operation: Tues.-Sun. Lunch is served 12-3 pm

Directions from the Mount Beacon Incline Railway to Café Amarcord:

(travel time: approximately five minutes)

Start out going north on Howland Ave toward East Main Street

Take the first left onto East Main Street
276 Main Street is on the right

“Off street parking and an outdoor patio for warm weather dining. Café Amarcord's warm comfortable decor and delightful food awaits your discovery.”

SPECIALS AT CAFÉ AMACORD:

Mushroom Soup, Rosemary Lamb Skewer & Couscous, Pappardelle with Black Pepper Ricotta, Bacon n' Bleu Cheese Stuffed Burger, Lobster Macn'Cheese



After a satisfying lunch at the Café, you will make your way to Mount Gulian. You will arrive at 1:15 p.m.

Directions from Café Amacord to Mount Gulian (travel time: approximately four minutes)

1. Start out going northwest on Main St/RT-52-BR toward N Brett St.
2. Turn right onto RT-9D/North Ave/RT-52-BR.
3. Turn slight left onto Hudson View Dr.
4. Take the 1st left onto Lamplight St.
5. Lamplight St becomes Sterling St.
6. 145 STERLING ST is on the left.



Mount Gulian

Hours of Operation:

April-October
Wed-Fri & Sun 1:00pm-
5:00 pm
Last tour at 4:00 pm

Rates & Fees:

\$8-Adult
\$6- seniors
\$4- Youth (6-18)

145 Sterling Street, Beacon, NY 12508

845-831-8172

E-mail: info@mountgulian.org

<http://www.mountgulian.org/>

History: Mount Gulian is an 18th century Dutch Manor, which played an integral role in American history. In 1683, Francis Rombout Stephanus Van Cortlandt, and Gulian Verplanck bought the 85,000-acre parcel of land from the Wappinger Indians, encompassing nearly 1/7 of modern day Dutchess County. The Verplanck were prominent citizens that played an active role in the Revolution, Gulian being involved in anti-British groups. He granted Mount Gulian to the Continental Army for use citing its strategic location on the Hudson River and proximity to Fishkill Barracks and Washington's Headquarters at Newburgh. Mount Gulian served as the headquarters of General Fredrich von Steuben, and witnessed the creation of the "Society of the Cincinnati."



Site: Site includes the house, barn, and garden. Mount Gulian offers a host of educational programs catered to your specific needs.

Directions: Take the Taconic Parkway to Interstate 84 West or take the NY State Thruway to Exit 17 Newburgh to I-84 East. Then, take Interstate-84 to Exit 11 Wappingers Falls/Beacon. Proceed on Route 9D North 2/10ths of a mile. Make left onto Hudson View Drive, and into the Hudson View Park Apartments complex, and you will see the Mount Gulian sign. Make immediate left onto Lamplight Street (which becomes Sterling Street). Pass through the garden apartment complex until the end. Mount Gulian is at end of Sterling Street; park on the circular driveway

After departing Mount Gulian, you will head to the Madame Brett Homestead

Directions from Mount Gulian to Madame Brett Homestead

(Travel time: approximately 5 minutes)

1. Start out going east on Sterling St toward Lamplight St.
2. Sterling St becomes Lamplight St
3. Turn right onto Hudson View Dr.
4. Turn slight right onto RT-9D.
5. Turn left onto Main St/RT-52-BR.
6. Turn right onto Teller Ave.



Madam Brett Homestead

50 Van Nydeck Ave.
Beacon, NY 12508
(845) 831-6533.

<http://melzingah.awardspace.com/id5.hm>

Hours of Operation:

April-December

Open houses are held for the public from
1:00pm- 4:00 pm (allow 45 minutes for a
tour)

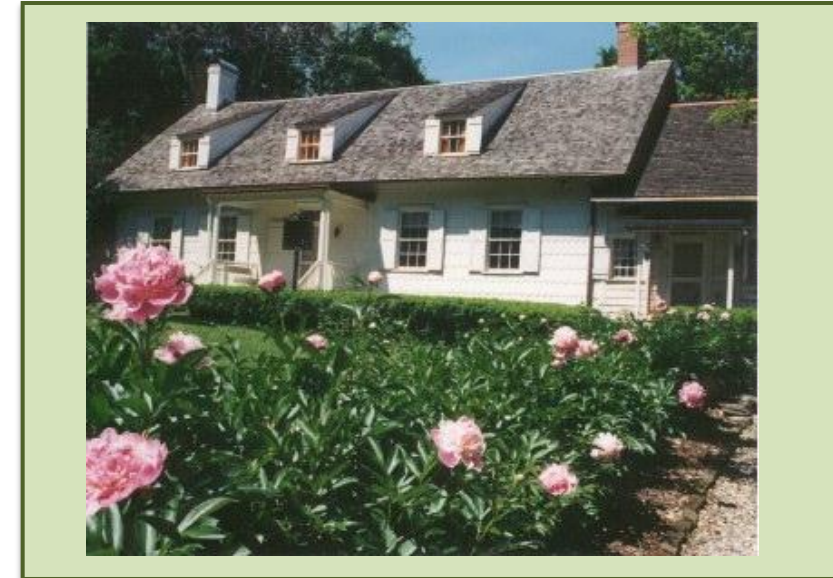
on the second Saturday of the month

Rates & Fees:

\$5- Adult

\$2- Student

History: Built in 1709, The *Madam Brett Homestead* is the oldest house in Dutchess County. The homestead belonged to Roger and Catheryna Brett. Catheryna, left widowed, maintained ownership of the home as well as the 28,000 acres of property. Such notables as George Washington, the Marquis de La Fayette, and Baron von Steuben were guests in the home.



Site: The home has been preserved by the Daughters of the American Revolution, as an historical site, allowing visitors the opportunity to step into history, surrounded by original 18th century Dutch style architecture, as well as artifacts and furnishings in the home that remain from the colonial period.

Directions: Traveling on the NY State Thruway (I-87) - Exit 17 Newburgh. Follow ramps to I-84 east. Cross the Hudson River on the Newburgh/Beacon Bridge. Exit 11 Beacon. Turn right onto NY Rt. 9 D. Travel 1.9 miles to the bust of General Washington. Turn left onto Teller Avenue. Proceed past three blocks. Turn right onto VanNydeck Avenue. Parking at Homestead on right.

*After visiting the Madame Brett Homestead, you will arrive in time for your 6:30pm reservations at **Brother's Trattoria***

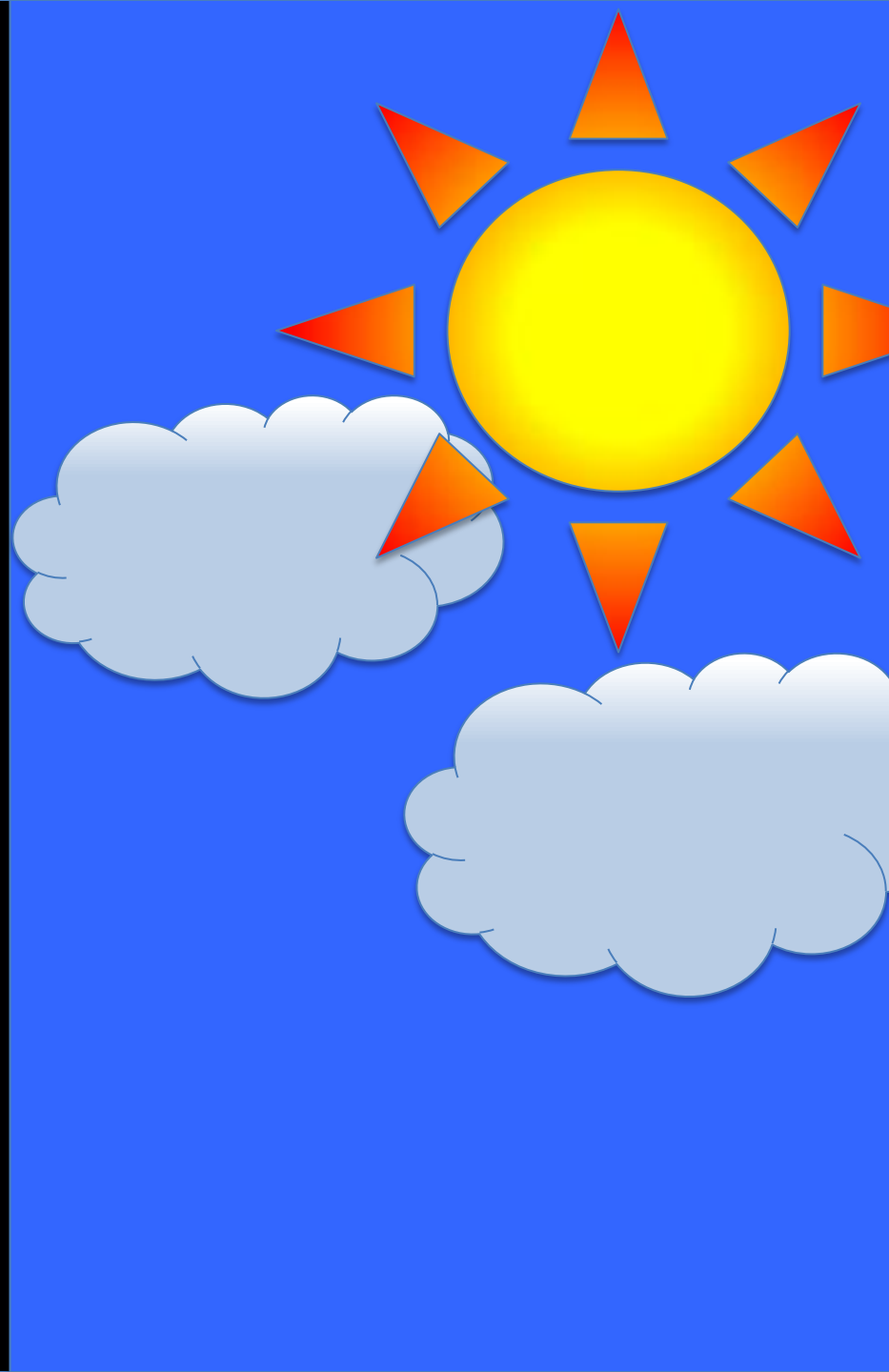
After a long day of touring three historical sites, you will have worked up a large appetite. Brother's Trattoria has something for everyone's palette.

*"The food, the service and the ambiance at **Brother's** make you feel like you are in an upscale New York City restaurant. The unique Northern Italian Cuisine, atmosphere and impeccable service will make your dining experience in Beacon second to none."*

Sample Entrées:
Rigatoni Carbonara,
Lobster Ravioli,
Chicken Scampi,
Grilled New York
Sirloin



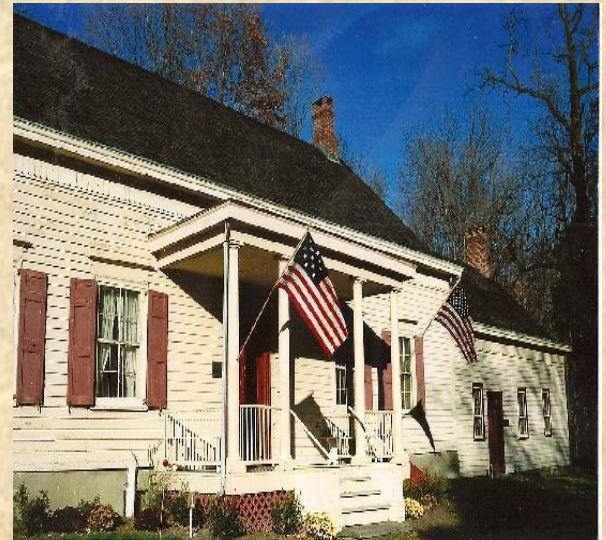
*In the morning, you will eat breakfast at the hotel, and
then make your way to the Van Wyck Homestead
Museum.*



Good morning! You will now continue your excursion at the Van Wyck Homestead Museum. You will arrive at 10:00 am

Directions from Hilton Garden Inn to Van Wyck
(Travel Time: approximately 2 minutes)

1. Start out going northeast on Westage Dr toward US-9 S.
2. Take the 1st right onto US-9 S.



Van Wyck Homestead Museum

504 Route 9, Fishkill, NY 12524
(845) 896-9560

Hours:

June 1 - October 31
Weekends, 1:00pm – 4:00pm
& gladly by appointment

prostenberg@fishkillridge.org
www.fishkillridge.org/history/vanwyck.htm

Rates & Fees: By Donation

History: This Dutch Colonial house was built in 1732 by Cornelius van Wyck. It served as the headquarters for a supply depot that served the Continental Army during the American Revolution. George Washington, the Marquis de Lafayette, Alexander Hamilton, and John Jay and other historical dignitaries have visited the house. Today, visitors can tour the property and see monuments, artwork, 18th and 19th century furnishings, as well as artifacts from the original supply depot.



Site: The site includes artifacts from the American Revolution and Fiskill Supply Depot, as well as Hudson Valley portraits & local historical artifacts. There is also a library of local genealogy and history.

Directions: Head east on I-95 lower level N. Take exit 1C for I-87/Maj Deegan Expy toward Albany/Queens. Keep right at the fork and merge onto I-87 N. Take exit 7A toward Saw Mill River Pkwy/Taconic State Pkwy. Merge onto Saw Mill Pkwy N. Take exit 26 toward Taconic Pkwy/Albany. Merge onto Taconic State Parkway. Take the exit onto New York 9A N/NY-100 N. Continue to follow New York 9A N. Take the exit on the left onto New York 9A N/US-9 N toward Peekskill. Continue to follow US-9 N. Turn left onto US-202 W/US-6 W/US-9 N/Jans Peek Branch/Lower S St. At the traffic circle, continue straight onto US-9 N/Albany Post Rd. Continue to follow US-9 N. The Homestead will be on the right.

Hope you worked up an appetite! You have lunch reservations at ***Hudson's Ribs & Fish.***

Hudson's Ribs & Fish

1099 Route 9, Fishkill, NY 12524

Telephone: (845) 297-5002

**Directions from Van Wyck
Homestead Museum to
Hudson's Ribs and Fish:**

(a drive of only five minutes)
US-9 N

Sample Dishes:

"Four Cheese Onion Soup", "Crab Rangoons" a variety of Steak cuts, and an assortment of Fish dishes. All dishes include Hudson's signature hot popovers with strawberry butter, a family style Caesar salad made with baby romaine hearts, fresh cut vegetable tray, and a choice of a gigantic one pound baked potato, homemade mashed potatoes, rice pilaf, or garlic steak fries.



After a very appetizing lunch, you will make your way to the home of FDR, located in Hyde Park. You will arrive at FDR park at 2:00 p.m.

Directions from Hudson's Ribs and Fish to FDR Home:

(Travel Time: Approximately 5 minutes)

Start out going south on US-9 toward Old Route 9.

Turn slight left onto Route 52/Main Street.

Turn left onto Vanderbilt Park Road



Home of Franklin Delano Roosevelt & Presidential Library

Hours of Operation:

House:

Open seven days a week 9:00am-5pm by guided tour only

Last tour at 4:00pm

Grounds:

Sunrise to Sunset daily

Library & Museum:

Research Room: 8:45 am- 5:00 pm

9:00 a.m. to 5:00 p.m., November through March

9:00 a.m. to 6:00 p.m., April through October

Closed Thanksgiving, Christmas, and New Year's Day



History: Springwood, the FDR home in Hyde Park, was the childhood home of our nation's longest serving president. The home remained in FDR's mother's name until being given to the National Parks Service.

Site: The site includes tours of FDR's home, as well as the beautiful grounds and gardens surrounding the home. Visitors can also see the graves of the former president and first lady in the Rose Garden.

*Cell phone tour available

Directions: From New York City: Henry Hudson Parkway (Route 9A) to the Sawmill River Parkway to the Taconic State Parkway. Exit at Route 55 west (Poughkeepsie). Follow Route 55 west to Route 9 north. Once on Route 9 the Roosevelt Home is approximately 5 miles north on Route 9.

(New Paltz), take 299 east, to 9W south, follow the signs to Mid-Hudson Bridge (also known as the Franklin Delano Roosevelt Bridge). After crossing bridge follow overhead signs to Route 9 north. You will come to the Roosevelt Home first approximately 5 miles north once you exit the bridge.

After visiting the FDR home, you will make your way to the last historical site of your trip, the Vanderbilt Mansion. You will arrive there at 3:30 p.m

Vanderbilt Mansion is 2 miles north of previous location.



The Vanderbilt Mansion

*519 Albany Post Road
Hyde Park, New York 12538
<http://www.nps.gov/vama/index.htm>
General Information: (845) 229-9115
Weekends: (845) 229-7770*

Hours of Operation:

Mansion Tours

Seven days a week from 9:00 am- 5:00 pm. Guided tour only.

*November-March: Tours offered 9:00am, 10:00am, 12:00pm, 2:00pm,
& 4:00pm. Schedule subject to change.*

**Last tour of the day: 4:00pm*

Grounds

The Vanderbilt Mansion

Open 7 days a week, year round, from sunrise to sunset.

Rates & Fees: \$8 Per person. Children 15 and under admitted free. Grounds are accessible for free.

History: Frederick William Vanderbilt, the Grandson of Commodore Cornelius Vanderbilt, the richest man in America at the time, built The Mansion in 1898. The "American Renaissance" styling and decor speaks to the economic and social changes that took place after the Civil War. The Mansion serves as a testament to the nouveau riche and high society in the Hudson River Valley during the late 19th- early 20th Centuries.

The Site: Walking tour includes 45-minute of the Vanderbilt Mansion including first floor, second floor, and portion of basement.

**Cell phone tour is also available.*

Visitors can freely tour the beautifully manicured grounds and trails of the estate, taking in the natural beauty of Dutchess County.



From the Eveready Diner, you will return home with the following Directions:

Start out going South on Route 9

Merge onto I-84 toward Beacon/Newburgh

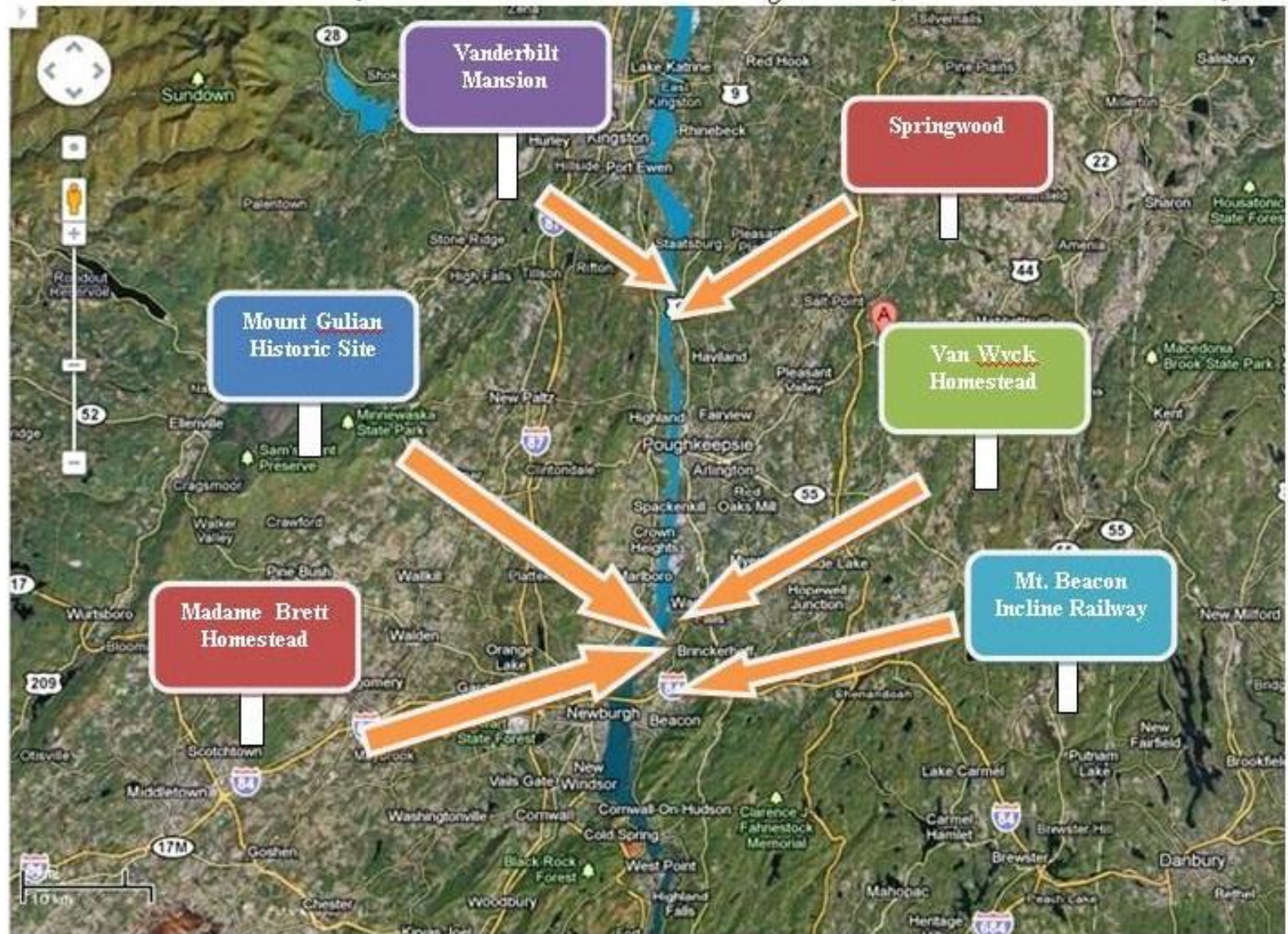
Merge onto I-87 toward NYC

Take the Palisades Parkway South Exit (13S) toward New Jersey

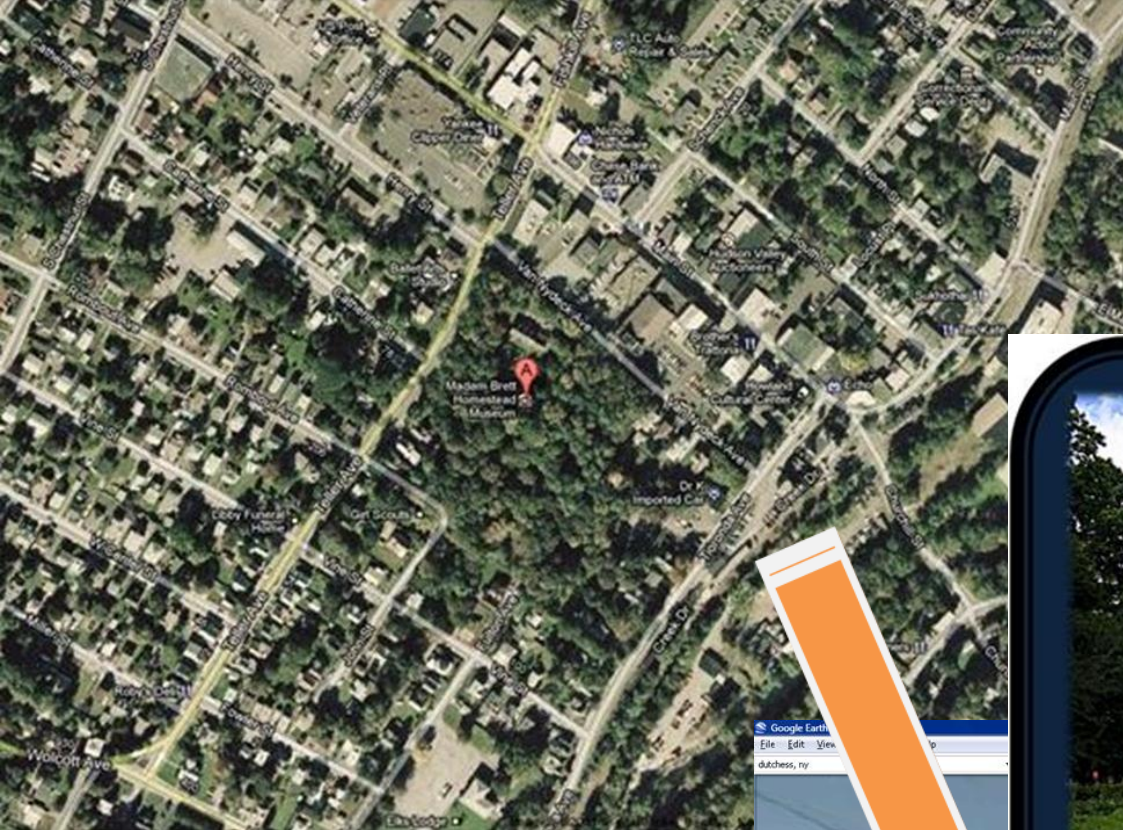
Merge onto Palisades Interstate Parkway South

Take the I-95 Exit toward G. Washington Bridge

Dutchess County Historic Site Highway Route Markers



Madame Brett Homestead



NEXT EXIT



A NATIONAL HISTORIC LANDMARK

MADAME BRETT HOMESTEAD





http://farm8.staticflickr.com/7034/6420263337_cf59aa8b19_z.jpg

A NATIONAL HISTORIC LANDMARK
MOUNT GULIAN



NEXT TURN

A National Historic Landmark

In 1 mile



Springwood



A National Historic Landmark



The Vanderbilt Mansion



In 1 mile

NEXT EXIT

A NATIONAL HISTORIC LANDMARK



VAN WYCK HOMESTEAD





MOUNT BEACON INCLINE RAILWAY



THE MOUNT BEACON INCLINE RAILWAY, LOCATED ON THE HUDSON RIVER IN BEACON, NEW YORK, WAS BUILT BY OTIS ELEVATOR COMPANY AND MOHAWK CONSTRUCTION. IT WAS OPENED IN 1902 AND TOOK PASSENGERS UP 1,540 FEET TO THE SUMMIT OF MOUNT BEACON, WHICH WAS HOME TO THE BEACONCREST HOTEL AND CASINO. VISITORS HAD ACCESS TO 75-MILE VIEWS OVERLOOKING THE HUDSON RIVER VALLEY. THE RAILWAY WAS CLOSED IN 1978 AND ADDED TO THE LIST OF NATIONAL REGISTER OF HISTORIC PLACES. THE MOUNT BEACON INCLINE RAILWAY RESTORATION SOCIETY IS WORKING ON RESTORING THE LANDMARK.

DUTCHESS COUNTY



HISTORIC SITE

DUTCHESS COUNTY, PERFECTLY LOCATED BETWEEN NEW YORK CITY AND ALBANY ON THE HUDSON RIVER, WAS FOUNDED IN 1683 BY DUTCH AND GERMAN SETTLERS.



MOUNT GULIAN

MOUNT GULIAN IS LOCATED IN FISHKILL, NEW YORK IN DUTCHESS COUNTY. IT WAS BUILT AROUND 1730 BY FRANCIS ROMBOUT AND GULIAN VERPLANCK. IN 1783 IT SERVED AS MAJOR GENERAL FRIEDRICH WILHELM VON STEUBEN'S HEADQUARTERS DURING THE AMERICAN REVOLUTION. IT WAS ALSO THE SITE WHERE THE SOCIETY OF THE CINCINNATI WAS FOUNDED IN 1783. A FIRE DESTROYED THE ORIGINAL HOUSE IN 1931, BUT IT WAS REBUILT IN 1975 BY DESCENDENTS OF GULIAN VERPLANCK AND TURNED INTO A MUSEUM.

DUTCHESS COUNTY



HISTORIC SITE

DUTCHESS COUNTY, PERFECTLY LOCATED BETWEEN NEW YORK CITY AND ALBANY ON THE HUDSON RIVER, WAS FOUNDED IN 1683 BY DUTCH AND GERMAN SETTLERS.



MADAM BRETT HOMESTEAD



THE MADAM BRETT HOMESTEAD IS LOCATED IN THE HISTORIC CITY OF BEACON, NEW YORK TO THE EAST OF THE HUDSON RIVER IN DUTCHESS COUNTY, NEW YORK. THE 18TH CENTURY HOME BELONGED TO CATHERYNA ROMBOUT BRETT AND WAS PASSED DOWN THROUGH GENERATIONS UNTIL IT WAS PURCHASED AND PRESERVED BY THE DAUGHTERS OF THE AMERICAN REVOLUTION IN 1954. THE HOUSE PLAYED A VITAL ROLE IN THE AMERICAN REVOLUTION AND SERVED AS SHELTER AND STORAGE DURING THE WAR. THE HOME HAS 17 ROOMS AND INCLUDES ORIGINAL FURNITURE AND OTHER RELICS OF THE PERIOD.

DUTCHESS COUNTY

**MADAM BRETT
HOMESTEAD**

HISTORIC SITE

DUTCHESS COUNTY, PERFECTLY LOCATED BETWEEN NEW YORK CITY AND ALBANY ON THE HUDSON RIVER, WAS FOUNDED IN 1683 BY DUTCH AND GERMAN SETTLERS.



VAN WYCK HOMESTEAD

THE VAN WYCK HOMESTEAD IS LOCATED ON THE OLD ALBANY POST ROAD (ROUTE 9) IN FISHKILL, NEW YORK IN DUTCHESS COUNTY. BUILT IN 1732 BY CORNELIUS VAN WYCK, THE HOME LATER BECAME THE FISHKILL SUPPLY DEPOT UNDER THE CONTINENTAL ARMY IN 1755. DUE TO ITS STRATEGIC LOCATION, IT SERVED AS A MILITARY CAMP, STORAGE YARD, AND HEADQUARTERS TO GENERAL ISREAL PUTNAM. IN 1962, THE HOUSE WAS DONATED TO THE FISHKILL HISTORICAL SOCIETY AND WAS TURNED INTO A MUSEUM. ARTIFACTS ARE ON DISPLAY INSIDE THE HOUSE, WHICH IS OPEN TO THE PUBLIC JUNE THROUGH OCTOBER.

DUTCHESS COUNTY



HISTORIC SITE

DUTCHESS COUNTY, PERFECTLY LOCATED BETWEEN NEW YORK CITY AND ALBANY ON THE HUDSON RIVER, WAS FOUND IN 1683 BY DUTCH AND GERMAN SETTLERS.



SPRINGWOOD



SPRINGWOOD, LOCATED IN HYDE PARK, NEW YORK, ON THE EAST BANK OF THE HUDSON RIVER, WAS THE HOME OF THE 32ND PRESIDENT OF THE UNITED STATES, FRANKLIN DELANO ROOSEVELT. ORIGINALLY BUILT BY A GROUP OF MERCHANTS FROM NEW YORK CITY AROUND 1800, THE HOME WAS EXPANDED BY OWNER JOHN WHEELER IN 1845, BEFORE IT WAS SOLD TO FRANKLIN D. ROOSEVELT'S FATHER, JAMES ROOSEVELT IN 1866. FRANKLIN DELANO ROOSEVELT LIVED AT SPRINGWOOD WITH HIS WIFE, ELEANOR, THEIR CHILDREN, PETS, AND HIS MOTHER, SARA. AFTER ROOSEVELT'S DEATH IN 1945, THE HOME BECAME A NATIONAL HISTORIC SITE AND MUSEUM. IT IS OPEN TO THE PUBLIC YEAR-ROUND.

DUTCHESS COUNTY

SPRINGWOOD

HISTORIC SITE

DUTCHESS COUNTY, PERFECTLY LOCATED BETWEEN NEW YORK CITY AND ALBANY ON THE HUDSON RIVER, WAS FOUNDED IN 1683 BY DUTCH AND GERMAN SETTLERS.



VANDERBILT MANSION

THE VANDERBILT MANSION, HISTORICALLY CALLED “HYDE PARK,” IS LOCATED ON THE EAST BANK OF THE HUDSON RIVER IN DUTCHESS COUNTY, NEW YORK. THE MANSION ORIGINALLY BELONGED TO FREDERICK W. VANDERBILT, BUT IS NOW A NATIONAL HISTORIC SITE.

THE MANSION BOASTED ELECTRICITY, INDOOR PLUMBING, TELEPHONES, AND A HOT-WATER HEATER, ALL OF WHICH WERE GREAT TECHNOLOGICAL ADVANCES. THE 212 ACRE PROPERTY, WHICH INCLUDES A 54-ROOM MAIN HOUSE AND SURROUNDING ITALIAN-STYLE GARDENS, IS OPEN FOR GUIDED TOURS FROM APRIL TO OCTOBER. THE GROUNDS ARE OPEN YEAR ROUND.

DUTCHESS COUNTY

VANDERBILT MANSION

HISTORIC SITE

DUTCHESS COUNTY, PERFECTLY LOCATED BETWEEN NEW YORK CITY AND ALBANY ON THE HUDSON RIVER, WAS FOUND IN 1683 BY DUTCH AND GERMAN SETTLERS.



PIAZZZZ!

YAY!

PIAZZZZ!

PIAZZZZ!

PIAZZZZ!

PIAZZZZ!

PIAZZZZ!

WOO
HOO!



WEBSITES ABOUT DUTCHESS COUNTY

- <http://www.dutchesstourism.com/>
- <http://dutchessny.gov/>
- http://govsites.org/sites.cfm/new%20york_dutchess%20county.html
- <http://www.dutchesscountyhistoricalsociety.org/>
- http://en.wikipedia.org/wiki/Dutchess_County,_New_York
- <http://www.historicdutchesstowns.org/index.html>

Conclusion

- Dutchess County has proven to have incredible sites for tourists and students that allow individuals to view authentic locations from hundreds of years ago. This county is also known for its' beauty of the landscape and nature it currently possesses.



HUZZZAH!!!

