

*Flowing 5's Logo!*

Kathleen Clarke

Katie McAuliffe



Marisa Scarpitta

Katherine Miller

Jaime Landry

# Thesis:

- This county is a great place to live or visit because of its many exciting recreational site such as: Big Bear Ziplines, Hyde Park Roller Magic, the Walkway Over the Hudson, the Old Rhinebeck Aerodome and the Blue Sky Balloons.

# Outline

- Logo(Katie McAuliffe)
- Thesis (Group)
- Itinerary and Guidebook (Katie Miller and Jamie Landry)
- interpretive Pannels (Katie McAuliffe)
- Highway route markers (Kathleen Clarke)
- Lesson Plans (Marisa Scarpitta)
- Conclusion



[en.wikipedia.org](http://en.wikipedia.org)

# Dutchess County Where History Becomes Recreation



# History of Dutchess County

- In the 19<sup>th</sup> Century the Industrial revolution lead to a boost in the economy
- This allowed time for more recreational activities.





www.twitter  
.com



newlett.org

- All the recreational sites have websites to further promote their activities, which include:
- Facebook and Twitter links allow people to follow along through popular social media
- Pictures help draw people in and event schedules assist in planning visits

Here are links to the actual websites:

- <http://www.bigbearziplines.com/>  
<http://www.olderhinebeck.org/>  
<http://www.hydeparkrollermagic.com/>  
<http://www.blueskyballoons.com/index.htm>  
<http://www.walkway.org/>

# How can the sites further their tourism strategies?

- Ads in magazines
  - Articles in newspapers
  - Billboards
- Dutchess County has a magazine to advertise all the recreational activities it has to offer →
  - Link to online magazine
  - <http://www.dutchesstourism.com/index.php>



Simple and Sophisticated. You Deserve Dutchess.

luminarypublishing.com

# FACTS

## Big Bear Ziplines

- soar at eighty feet high from tree to tree at speeds of up to 30 miles per hour!
- **easily accessible** as it is the closest ziplining canopy course to New York City
- anyone weighing at least eighty pounds can fly through the treetops for 2/3 hours for **only ninety nine dollars!**
- Reservations must be made in advance; and a safety waiver must be signed. Minors must be accompanied by an adult/legal guardian



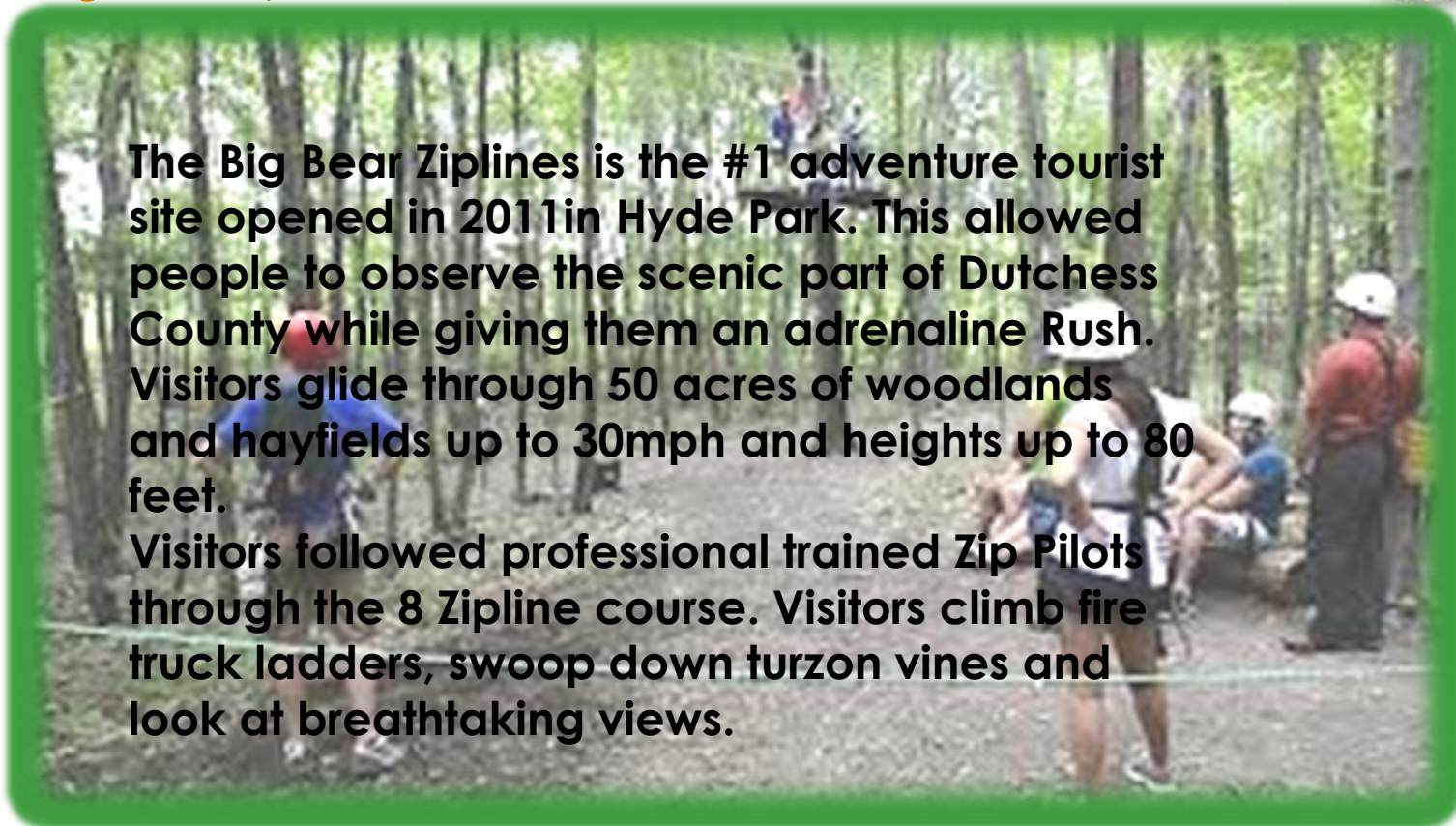
# Interpretative Sign



## Big Bear Zipline

**The Big Bear Ziplines is the #1 adventure tourist site opened in 2011 in Hyde Park. This allowed people to observe the scenic part of Dutchess County while giving them an adrenaline Rush. Visitors glide through 50 acres of woodlands and hayfields up to 30mph and heights up to 80 feet.**

**Visitors followed professional trained Zip Pilots through the 8 Zipline course. Visitors climb fire truck ladders, swoop down turgon vines and look at breathtaking views.**



<http://www.bigbearziplines.com/>



## Lesson Plan

Overall Objective: 1.) *Students will learn about nature* which includes both picturesque and man-made creations in the Hudson River Valley. 2.) Students will work on their teambuilding and creativity skills by working together to create their own art.

# Big Bear Ziplines Procedure

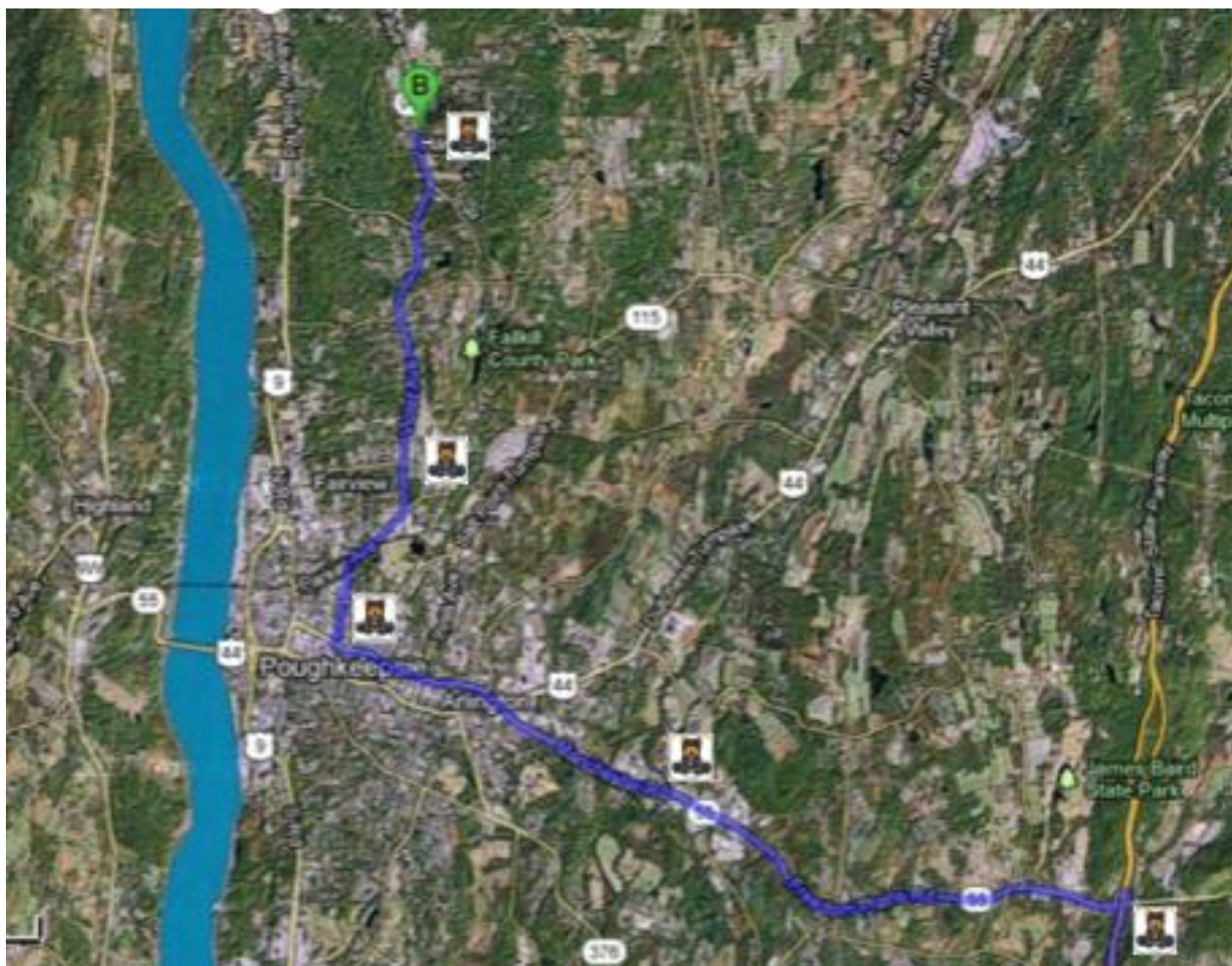
- Learn about nature in the Hudson River Valley
- listen to the zipline tour guide talk about the history of the zipline and nature
- Students will ride the Little Bear Zipline
- In groups students will write one aspect of nature they noticed and describe it
- Each group will draw their own illustration of a zipline and create their own natural landscape on a poster
- Each group will present their creation

[funfix.com](http://funfix.com), zipliners ready to go



# BIG BEAR ZIPLINES







# WHY WALK THE WALKWAY?

- At 212 feet high and 1.28 miles long, the scenic Walkway Over the Hudson is the longest elevated pedestrian bridge in the world, and an experience everyone should enjoy!
- runners, bikers, pedestrians and families alike who are looking to get their exercise can also take in the beautiful view!



# Walkway over the Hudson Procedure

- Students will be split into groups
- Each group will be given three pictures that will match up with the “factoid” panels
- Under each picture there will be a paragraph with blank spaces to fill in
- The students will find the panels that resemble their pictures and fill in the blanks in the paragraph, by reading the historical facts on the panels
- Once paragraphs are filled in students will take group photo next to panel
- Students will draw a simple picture of their interpretation of the bridge including a simple scenic view

Flowing Fives on  
walking bridge



# Interpretative Sign



## Walkway Over the Hudson

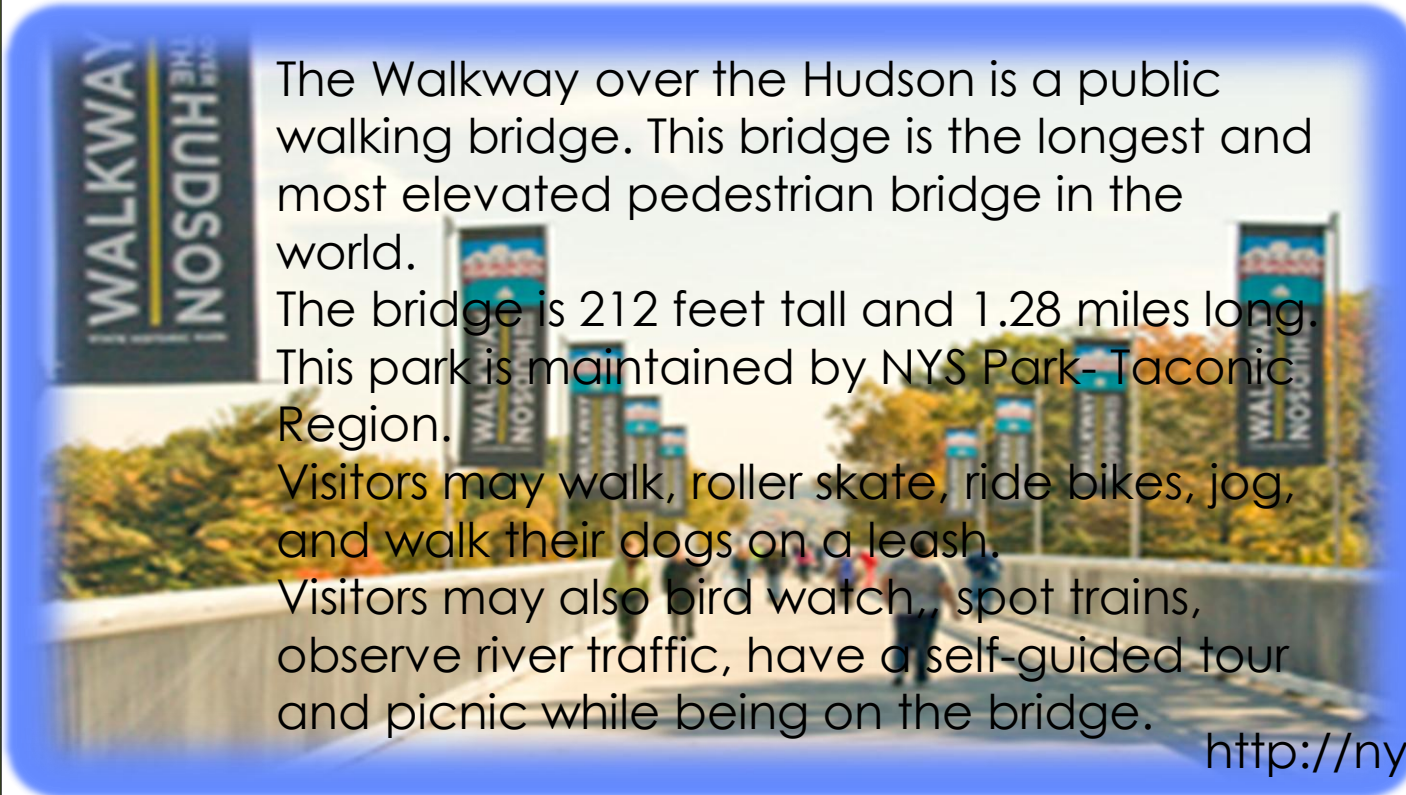
The Walkway over the Hudson is a public walking bridge. This bridge is the longest and most elevated pedestrian bridge in the world.

The bridge is 212 feet tall and 1.28 miles long. This park is maintained by NYS Park-Taconic Region.

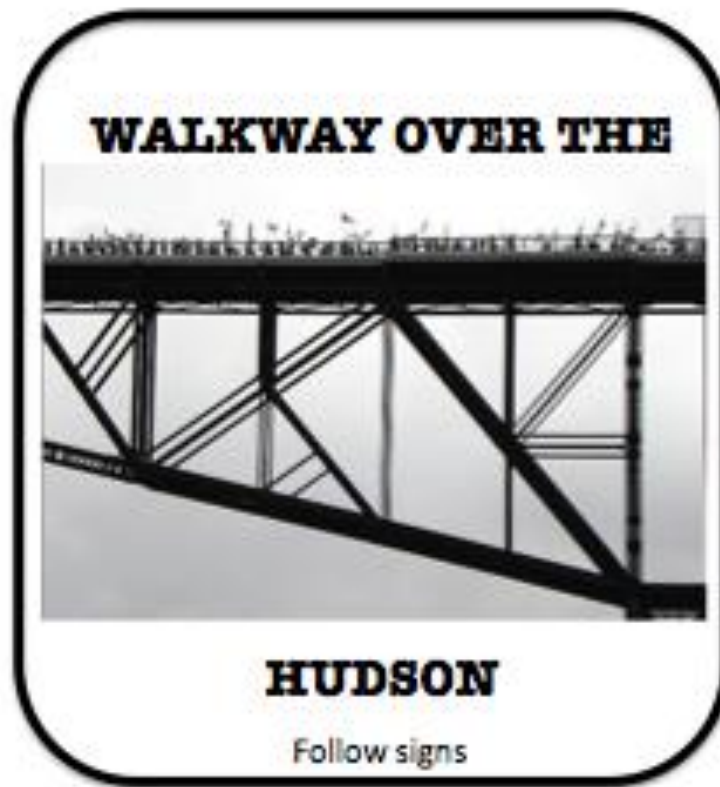
Visitors may walk, roller skate, ride bikes, jog, and walk their dogs on a leash.

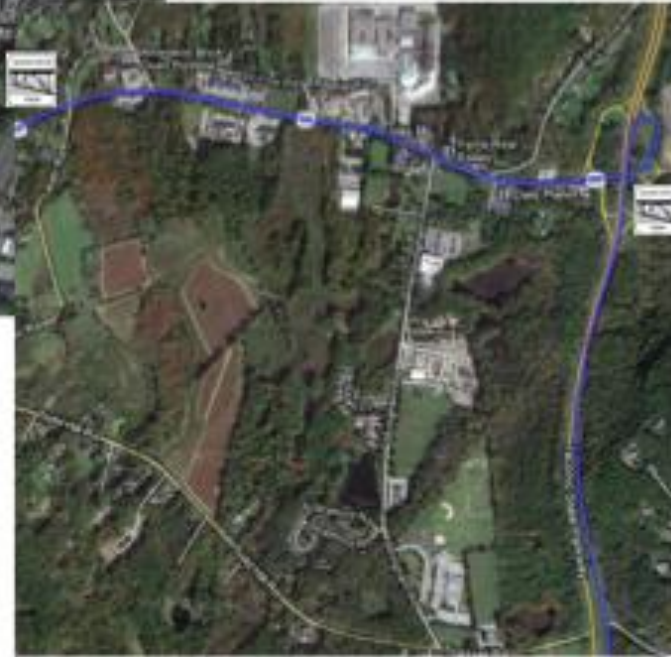
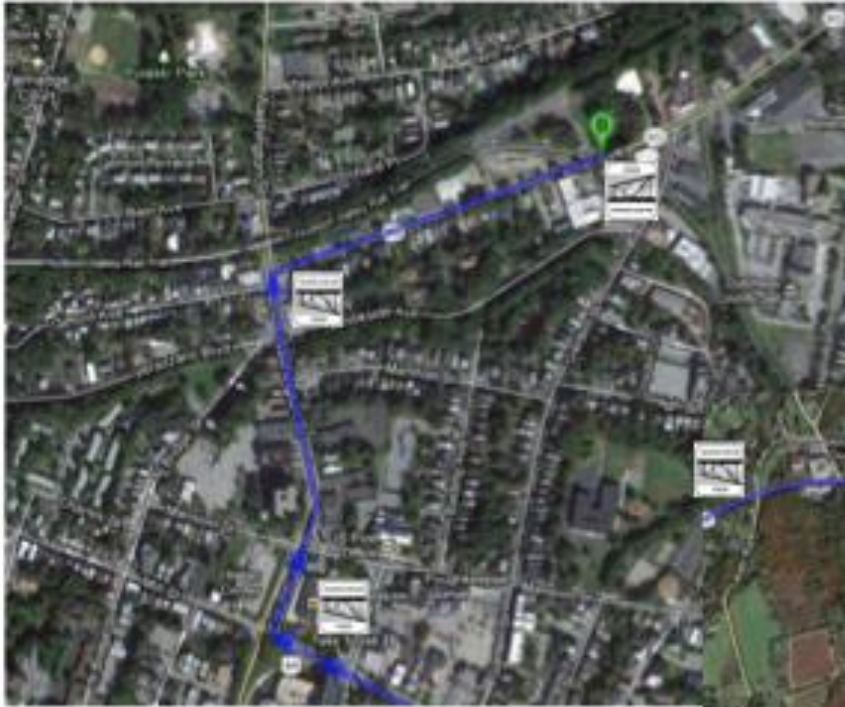
Visitors may also bird watch, spot trains, observe river traffic, have a self-guided tour and picnic while being on the bridge.

<http://nyspark.com>



# WALKWAY OVER THE HUDSON





# Blue Sky Balloons

- Blue Sky Balloons is located in Poughkeepsie
- They have been up and running for thirty-six years opening in 1976,
- Bill Hughes, a former Navy Pilot, has been running it himself for the past twenty five.
- A ride is \$225 a person and they don't take flight in the winter due to weather conditions



[balloonfestivals.com](http://balloonfestivals.com)

# Interpretative Sign

The Blue Sky Balloons is a scenic hot air balloon ride tourist place located in the Hudson River Valley for over 36 years with perfect safety records. This tourist site is a great family outdoor adventure.

Bill Hughes is the Balloonmeister (person who is responsible for all operational aspects of the balloon events). Hughes also makes the decisions of whether or not its safe flying conditions on each launch based on the weather conditions and his knowledge of the flying area and briefs the pilots accordingly.

Several balloons festivals took place such as the Adirondack Balloon Festival for the past 25 years.

These flights are scheduled in the morning just after sunrise and in the evening just before sunset.

There are special flights available like birthday celebrations, anniversaries or special occasions like engagement flights. You may also ask for private flights.



**Blue Sky  
Balloons**

**"Give the  
adventure  
gift of a  
lifetime to  
someone  
you  
love...or to  
yourself!"**

<http://blueskyballoons.com>

# Blue Sky Balloon Procedure

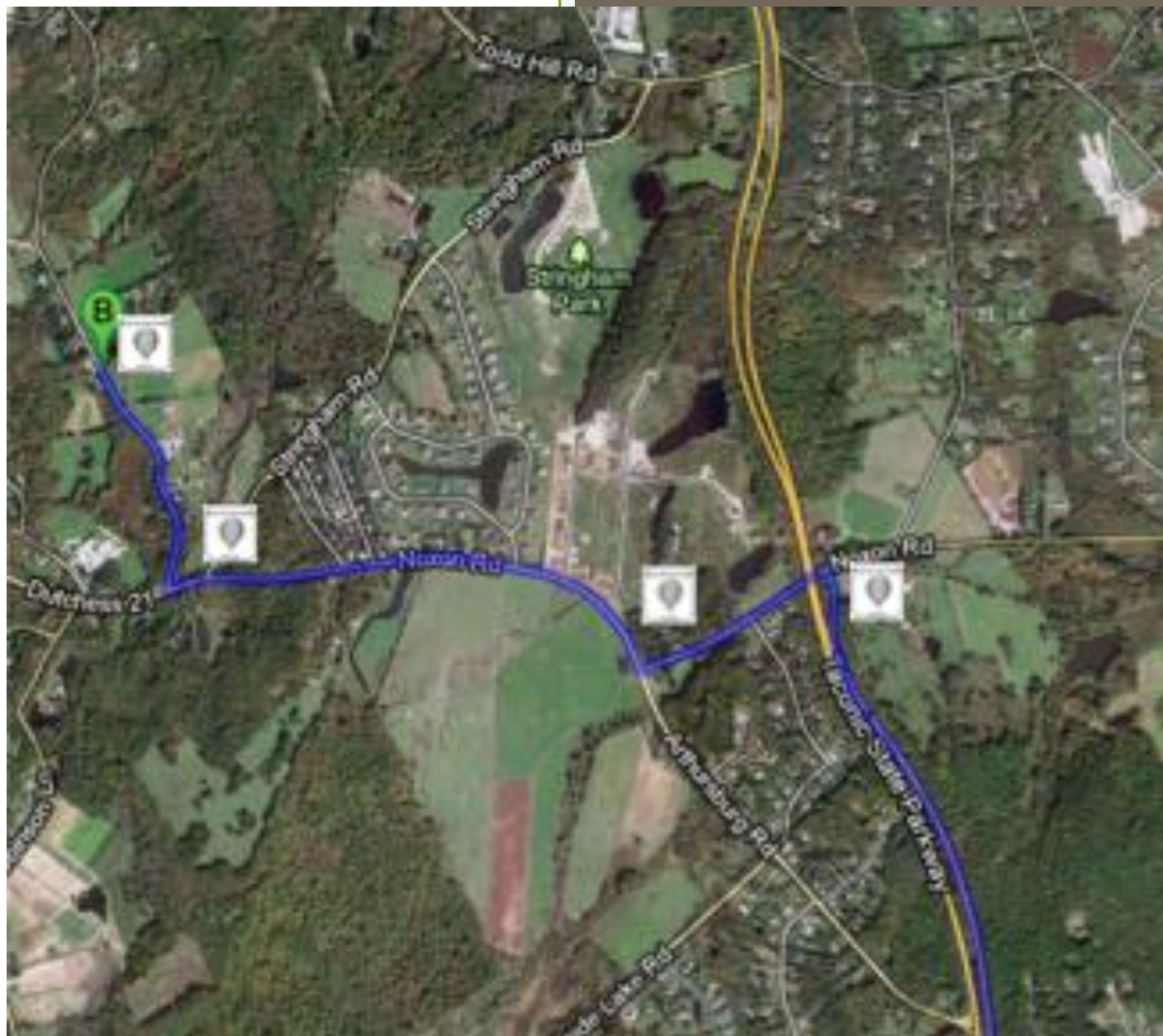
- The class will take a class trip to Blue Sky Balloons
- In groups students will fill out a worksheet that has a picture of a specific site they will view from the hot air balloon, with spaces underneath the picture so each member in the group can write a sentence about what they noticed
- They will learn about the history of the hot air balloons and how they work from the pilot
- Go for a ride in a Blue Sky hot air balloon and listen to the pilot's facts about the five major sites
- Write five sentences when they view their individual sites
- Look at a map & place their picture on the map and read aloud their sentences
- Make their own air balloons with the resources provided

Blue Sky Air Balloon



# BLUE SKY BALLOONS





# Old Rhinebeck Aerodome

-a museum of aviation from year's past-  
antique planes, engines, and memorabilia-  
brought to life in the present day

-airshows done to show the public about the  
“golden years” of aviation.

-The weekend air shows are done from mid-  
June through October, weather permitting.



# Interpretative Sign



Old Rhinebeck Aerodrome has air shows on weekends from mid- June through mid-October when weather permits. This is great entertainment for all ages.

On these weekends the Aerodrome tunes back the hands of time and relieves back to the years of early aviation.

On Saturday show History of Flight showing Pioneer, WWI, and Linderberg era aircrafts flying in the sky. When winds are calm they also fly their oldest aircraft which was built in 1909 called Bleriot.

On Sunday they feature WWI dogfight plus brainstorming aircrafts. Pre-show activities for the visitors include a parade where show early aviation engines, aeroplanes, motorcycles and automobiles from 1900-35.

Also have early aviation brainstorm rides where experience yourself the thrill of early aviation when looking at the scenic views of the Hudson Valley from below in an open cockpit 1929 new standard biplane.

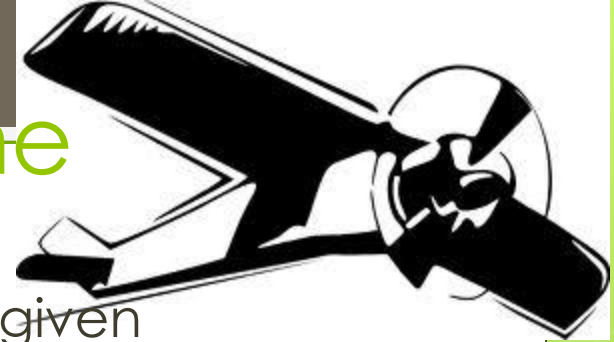
<http://oldrhinebeck.org>

[www.olderhinebeck.org](http://www.olderhinebeck.org)

# Old Rhinebeck Aerodrome

## Procedure

- Students will be split into groups and will be given a worksheet with some simple questions like, describe what the airplanes look like
- They will answer questions by listening to the tour guides explanations as they walk through the airplane museum
- Students will see a short air show
- In groups students will be provided with art materials to make their own paper airplane
- Somewhere on the paper the group will write down one interesting fact about the planes they learned
- The groups will get to fly their paper airplanes and see which groups' plane flies the farthest for fun
- Each group will retrieve their planes and tell the class what their interesting fact was



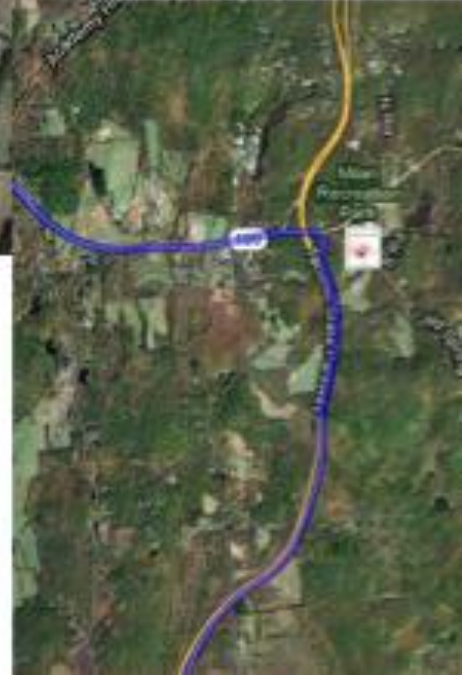
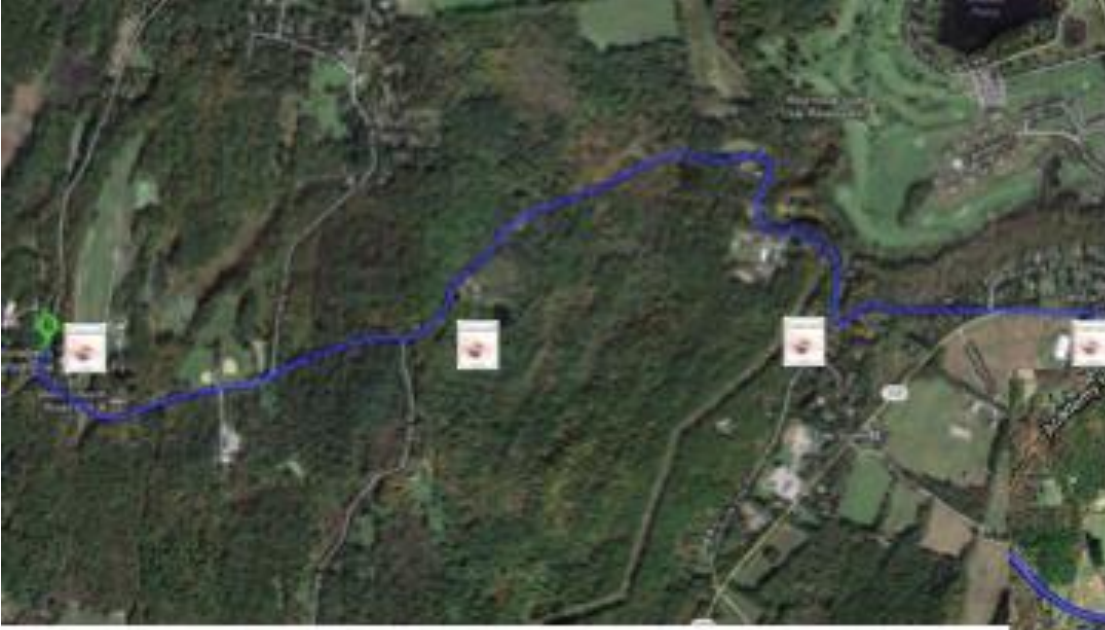
rpkphoto.smug  
mug.com

# OLD RHINEBECK AERODOME

OLD RHINEBECK AERODOME



Follow signs



# Hyde Park Roller Magic

- Hyde Park Roller Magic is located in the Historic Hyde Park.
- This recreational site is great for families and is filled with plenty of activities such as roller skating, in-line skating, birthday parties, holiday skate parties, dances, private parties, fund-raising events and corporate events.
- This wholesome family site is great for all ages!



[hydeparkrollermagic.com](http://hydeparkrollermagic.com)

# Interpretative Sign

## Hyde Park Roller Magic



Hyde Park Roller Magic (HPRM) is located in the historical Hyde Park. This #1 spot for good, wholesome family fun. This family fun facility host a wide variety of activities such as roller skating, in-line skating, birthday parties, private parties, dances, Women's Roller Derby, private events, fund raising events and corporate events.

HPRM has all the latest lighting, sounds and a live DJ who enjoy mixing up the music every now and then with interactive skating games.

Hyde Park Roller Magic also host Women's Roller Derby in the Hudson Valley Region. Horror which established in early 2006 which is all female operated and owned flat track roller derby league. It includes over 25 skaters. Horror #1 non urban derby team hold their place as #1 of national rebirth of roller derby that began in 2001.

[www.hydeparkrollermagic.com/](http://www.hydeparkrollermagic.com/)

# Hyde Park Roller Magic Procedure

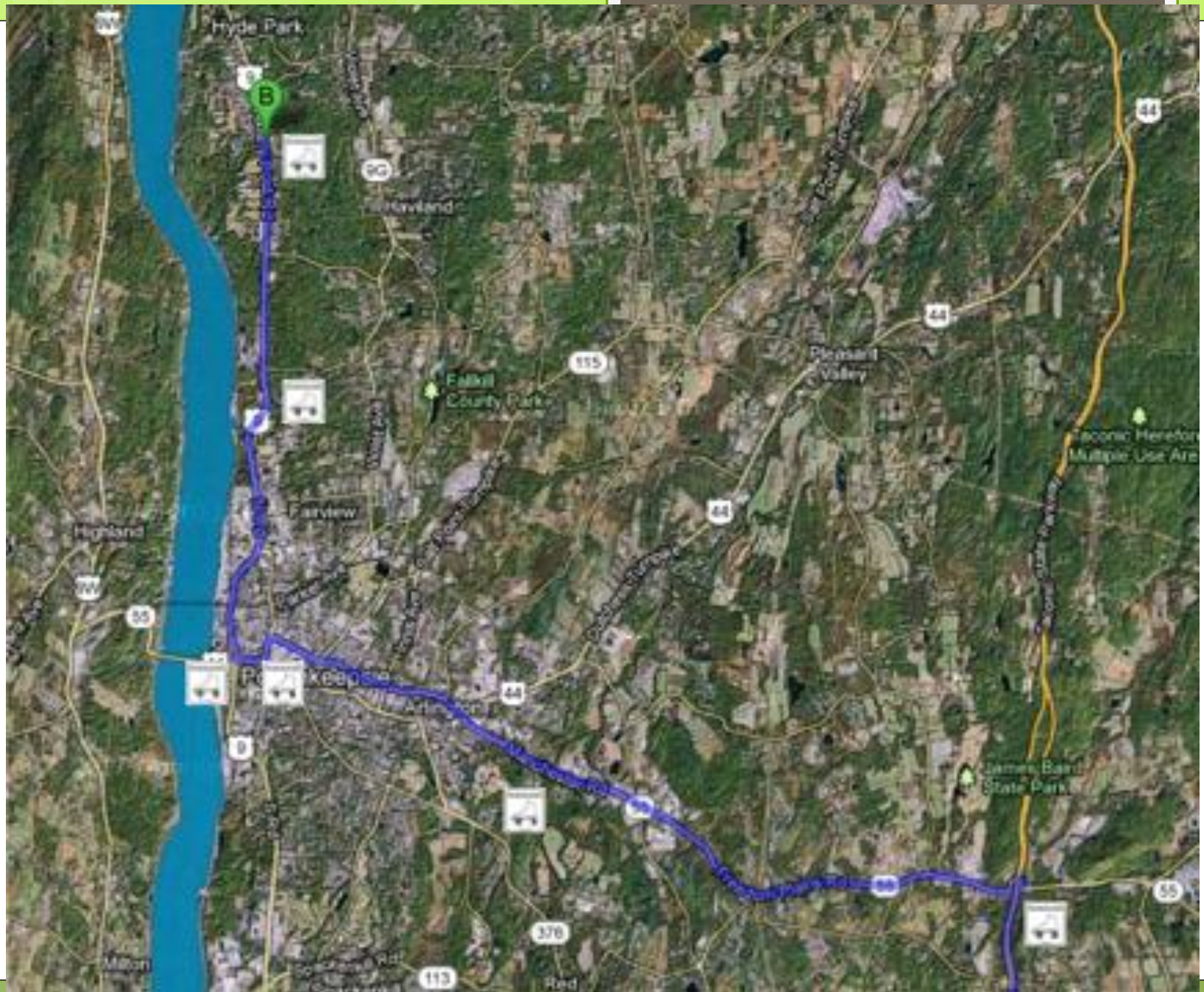


- Students will be split into groups and will be given a mini packet that has 8 pictures of Thomas Cole's original paintings. Under the picture there are five fill in the blank questions to be answered
- In their groups the students will have to find the images which are scattered around the rink, that resemble the pictures in their packet
- Once they find each image they will flip it over and read the paragraph on the back of it, in order to answer the questions
- Create their own works of art based on the paintings of Thomas Cole
- Explain their paintings, color patterns, and landscape



# HYDE PARK ROLLER MAGIC





# Itinerary and Guidebook

## Guidebook

### Itinerary

#### Blue Sky Balloons

Address: 99 Teller Avenue Beacon, NY 12508  
Phone Number: (845) 831-6917

Website: [www.blueskyballoons.com/](http://www.blueskyballoons.com/)

History: One pilot, the "Balloonmeister", former navy pilot, Mr. Bill Hughes has a perfect safety record of balloon flying for over 25 years. He is at the helm of the Blue Sky Balloons Operation, which has been opened for thirty six years since 1976.

General Description: Beacon, New York has been home for 36 years to the "Balloonmeister", the head pilot of hot air balloon flights at Blue Sky Balloons. Although the flights are open to everyone, it is highly suggested that flights be limited to children ages eight and up.

#### Directions to the Area:

##### Driving

Beacon's most major route is Interstate 84, which passes through the city's north side, providing a connection that is minutes to the Taconic State Parkway, New York State Thruway and Stewart International Airport.

##### Train

Commuter service to New York City is available via the MTA Beacon Train Station, served by Metro-North Railroad. The Station is one mile away from the Chrystie House.

##### Ferry

Beacon is serviced weekdays by a commuter ferry, The Newburgh-Beacon Ferry, over the Hudson between both cities. The ferry's route runs between Beacon City Harbor and Newburgh City Waterfront.

##### Taxi

Taxis are available from Beacon Train Station, or call (845) 831-7373 or (845) 838-1800 to make reservation

**Bed and Breakfast:** The Chrystie House, a fully restored nineteenth century Federal-style mansion which now is a luxurious bed and breakfast. It is within walking distance to the waterfront, train station and Beacon's Main Street. It is also within reasonable distance of both the entire Hudson Valley and the Catskills. Further, it is a mere 2 minute drive, or 0.87 miles away from the Blue Sky Balloons launch.

Chrystie House Bed and Breakfast  
300 South Avenue Beacon, New York 12508  
845 765-0251

<http://www.bedandbreakfast.com/my-beacon-chrystie-house.html>  
[chrystiehouse@gmail.com](mailto:chrystiehouse@gmail.com)

## Day 1

9:00-10:00 – breakfast at the Chrystie House

#### -Directions-



1. Start out going northwest on South Ave toward Deerlick. 0.5 mi  
1 minute



2. Turn left onto RT-9D / Wolcott Ave. 1.4 mi  
Continue to follow RT-9D. 3 minutes

- RT-9D is just past Denning Ave
- If you reach Spy Hill you've gone about 0.1 miles too far



3. Merge onto I-84 E toward Taconic Pkwy. 11.2 mi  
11 minutes

- If you reach Dogwood Ln you've gone about 0.1 miles too far



4. Merge onto Taconic State Pkwy N via EXIT 16N toward Albany. 8.4 mi  
10 minutes



5. Take the CR-21 / Noxon Rd ramp toward Noxon / Lagrangeville. 0.2 mi



6. Turn left onto Noxon Rd. 0.4 mi



7. Turn right to stay on Noxon Rd. 1.0 mi  
1 minute



8. Turn right onto Lauer Rd. 0.4 mi

- Lauer Rd is just past Stringham Rd
- If you reach Robinson Ln you've gone about 0.1 miles too far



9. 34 LAUER RD is on the right.

- If you reach Croft Hill Rd you've gone about 0.7 miles too far

10:05-10:40 – travel to the Blue Sky Balloons launch

11:00-2:00 – balloon flight

2:00-2:15 – travel to Poppy's for lunch

-Directions-

1. 0.4  
Start mi  
out  
going  
south  
on  
Lauer  
Rd  
toward  
Noxon Rd.



2. Turn left onto Noxon Rd. 1.0 mi  
1 minute



3. Stay straight to go onto Arthursburg Rd. 0.9 mi  
1 minute



4. Merge onto Taconic State Pky S. 7.2 mi  
8 minutes



5. Merge onto I-84 W toward Newburgh. 11.1 mi  
11 minutes



6. Take the RT-9D exit, EXIT 11, toward Wappingers Falls / Beacon 0.2 mi



7. Turn left onto RT-9D / RT-52-BR. 0.8 mi  
2 minutes

- Mobil is on the corner
- If you reach I-84 W you've gone about 0.1 miles too far



8. Turn left onto Main St / RT-52-BR. 0.2 mi

- Main St is just past W Church St
- Castle Point Emergency-Operator Connect Only Numb is on the corner
- If you reach Beacon St you've gone about 0.1 miles too far



9. 184 MAIN ST is on the left.

- Your destination is just past Cliff St
- If you reach Willow St you've gone a little too far

5:00-6:00 – dinner at Poppy's, a restaurant in Beacon famous for its burgers. It's a casual restaurant that's great for kids! It's wheelchair accessible and does takeout but not delivery.

184 Main St  
Beacon, NY 12508  
(845) 765-2121

<http://www.poppyburger.com>

6:00-7:00 – drive to Journey Inn bed and breakfast and spend the night in Hyde Park, New York. Journey Inn is right across from the historic Vanderbilt Mansion, and just south of Hudson and The Rip Van Winkle Bridge and only a 5 minute drive from Big Bear Ziplines!

-Directions-

1. Start 0.2  
out going mi  
northwest  
on Main  
St / RT-  
52-BR  
toward  
Cliff St.

➡ 9D 2. Take the 2nd right onto RT-9D / North Ave / RT-52-BR. Continue 6.0 mi  
to follow RT-9D. 9 minutes

- RT-9D is just past South Ave
- Castle Point Emergency-Operator Connect Only Number is on the corner
- If you are on Municipal Plz and reach Beekman St you've gone about 0.1 miles too far

➡ 3. Turn right onto Old Hopewell Rd. 1.1 mi  
2 minutes

- Old Hopewell Rd is 0.3 miles past Ketchamtown Rd
- If you reach Marlboro Rd you've gone a little too far

⬅ 9 4. Turn left onto US-9 N. 15.5 mi  
25 minutes

- US-9 N is just past Old Route 9N Rd
- 7-ELEVEN is on the corner
- If you reach Sucich Pl you've gone about 0.5 miles too far

➡ 5. Turn right onto Sherwood Pl. 0.01 mi

- Sherwood Pl is just past Linden Ln
- If you reach Vanderbilt Park Rd you've gone a little too far

■ 6. 1 SHERWOOD PL is on the left.

- If you reach the end of Sherwood Pl you've gone a little too far

1 Sherwood Place, Hyde Park NY, 12538  
(845) 229-8972  
[www.journeyinn.com/](http://www.journeyinn.com/)

Day 2

**Big Bear Zip-lines Canopy Tour**

Address - 817 Violet Avenue Hyde Park, NY 12538

Phone Number - (888) 947-2294

Website - [www.bigbearziplines.com/](http://www.bigbearziplines.com/)

History - Established in 2008, Big Bear Ziplines opened its doors to the public in 2011 after making sure that the course met or exceeded industry safety standards.

General Description - An exhilarating adventure course through the treetops, Big Bear Zip-lines is a great outdoor activity for the Hudson Valley. It is the closest zip-line canopy tour to New York City and offers a day of fun for families, and people of all ages.

9:00-10:00 AM - breakfast at the Journey Inn

10:05 - 10:10 - drive to big bear zip-lines

-Directions-

1. Start 0.01  
out going mi  
southwest  
on  
Sherwood  
Pl toward  
US-9 /  
Albany  
Post Rd.

⬅ 9 2. Turn left onto US-9 / Albany Post Rd. 0.2 mi

⬅ 3. Take the 2nd left onto E Market St. 1.3 mi  
3 minutes

- E Market St is 0.1 miles past Linden Ln
- Post Office-Hyde Park is on the left
- If you reach Main St you've gone a little too far



## Conclusion:

These recreational sites show that Dutchess is a great and entertaining county for everyone! You will never be bored, and will feel the history come to life around you!

# Annotated Bibliography

- Annotated Bibliography
- <http://www.olderhinebeck.org/>
- History
- Directions
- "about section"
- Social media sites it provided
- Interpretative Panels
- <http://www.bigbearziplines.com/>
- History
- Directions
- "about section"
- Social media sites it provided
- Interpretative Panels
- <http://www.walkway.org/>
- History
- Directions
- "about section"
- Social media sites it provided
- Interpretative panels
- <http://dutchessny.gov/>
- History
- <http://www.hydeparkrollermagic.com/>
- Home
- Directions
- Hours and Pricing
- Interpretative panels
- <http://www.blueskyballoons.com/bsbvirtual.html>
- About the Pilot
- Directions
- Policies
- Links
- Interpretative panels
- <http://www.nyspark.org/>
- Interpretative panel