

Corinne Cawley
History 218
Col. Johnson
Oct. 16, 2013

Key Sites

The area between the George Clinton Bridge and Rip Van Winkle Bridge has many key sites that visitors can explore. These key sites are: Poets' Walk, Montgomery Place, Tousey Winery, Olana State Historic Site, Thomas Cole National Historic Site, and Bailiwick Ranch and Zoo. These sites are wonderful parts of upstate New York that has rich history and many current day and historic sites.

Poets' Walk is located in Red Hook, New York on the scenic River Road. It is known as a "romantic landscape" and it meant to celebrate the connection between landscape and poetry. The park entails wooden vistas, sunlit fields, and thick forests. The main architecture of this park was Hans Jacob Ehlers' and designed the park in 1849. The park has mown and gravel paths that are lined with wooden handcrafted benches. The park is 120 acres of fields and forests and has beautiful river views. There are many activities one can do at the park: bird watching, dog walking, hiking, picnicking, and snowshoeing. The park is open year round. There is about 2 miles of trails but has places to rest such as, the Overlook Pavilion, a rustic Summer House, and benches.

Montgomery Place is located near Barrytown, New York. It is an early 19th century estate that has become a National Historic Landmark. It is best known as a landscape influences by Andrew Jackson Downing and an architectural landmark designed by Alexander Jackson Davis. This place is unique because of the house itself, gardens, arboretum, woodlands, orchards, hamlet, and natural features. The area is 380 acres and is the example of how Hudson Valley estate life was. The Hudson River and

Catskill Mountains are visible from the mansion's terrace and north pavilion. The woodland trails take a visitor through hemlock and hardwood forests to the waterfalls of the Saw Kill. The beautiful gardens are also something a visitor will enjoy looking at because of the vast amount of colors throughout it. Montgomery Place is a good site to visit because it has so much history and is also a place to enjoy nature.

Tousey Winery is located in the Blue Roof on Route 9 in Germanton, New York. The winery began as a family run business and still is a family run toady. Ray Tousey is the founder who turned his family grounds into a vineyard. This is the perfect spot to relax and enjoy the wines in a candle lit space. Along with wine, they also sell organic honey, handmade soaps, and local artwork. The site is overlooking the Hudson River and Catskill Mountains. The vineyard has 15 acres of Chardonnay, Riesling, and Pinot Noir. This is a good site to visit because they are known to have top quality wine in the Hudson Valley.

Olana State Historic Site is located in Greenport, New York. It was the 19th century home, studio, and designed landscape of Hudson River School artist Frederic Edwin Church. The estate is 250 acres. The mansion is Persian inspired filled with Church's sketches, studies, and paintings. Visitors of the Olana State Historic Site will be guided with house tours, which takes them around the property, family's farm, orchards, a lake, and Church's studio. There is also changing exhibits in the Evelyn and Maurice Sharp Gallery. While there, visitors can hike, run, and walk dogs, picnic, paint, take pictures, and take part in special events for all ages. There is a visitor center which offers an exhibit, films, interactive touch screen computers, and a museum shop.

Thomas Cole National Historic Site was the home and studio of the painter, poet, and essayist Thomas Cole, who was the founder of the Hudson River School of American painting. It is also known as Cedar Grove. It is located in Catskill, New York between the Hudson River and the Catskill Mountains and is right near the western entrance of the Rip Van Winkle Bridge. It is surrounded by water on three sides, which is why Cole loved the house so much. Visitors can join a guided tour of Cole's house and studio, watch a film about his artwork, and walk through the gardens. This site is a good site to visit because the views are beautiful and a visitor will also learn about Thomas Cole, who was a significant person in the Hudson River Valley.

Bailiwick Ranch and Zoo is the perfect place to visit for some fun. A visitor can walk through the park and see all the exotic animals. There is a petting and feeding areas, which is a very popular spot. There is a playground and bounce house, which is perfect for children. The farms at this site are: goats, sheep, pigs, calves, rabbits, and chickens. The exotic animals include: red kangaroos, ring tail lemurs, chimpanzees, an American black bear, reptile house, and a Bengal tiger. Besides just the zoo, visitors can go horseback riding, trail rides, paintball, and pony rides. This site is a fun site to visit for not just young children, but for everyone.

All of these sites are perfect sites to visit for a 36-hour visit. While you learn about the historic sites, one is taking in the beauty of the Hudson River. This area offers great sites for leisurely hobbies and has a wide range of activities one can do.

For the final, I am doing guidebooks. Guidebooks were made so it can help people who are interested in a location find out important information about that site. For the guidebooks, I had to do more research on each key site. I already had the history

information about each site for the guidebooks, but I need more than just that.

Guidebooks tell visitors the hours, historical descriptions, about the site, the directions, and any additional notes that would be helpful. My research that I did for the midterm helped me create the guidebooks since I already knew so much about each site. I did have to do a little more research about the hours and certain events that each site holds. I used similar methods to find out about the site by going on their websites. Guidebooks make it easier for tourists to get the right information about locations in the area they are traveling to.

Poets' Walk:



Olana State Historic Site:



Montgomery Place:



Tousery Winery:



Thomas Cole National



Bailiwick Ranch and Zoo:



References

Bailiwick Ranch & Discovery Zoo. N.p.. Web. 7 Oct 2013.

<<http://www.bailiwickranch.com>>.

"Montgomery Place ." *Historic Hudson Valley*. N.p.. Web. 7 Oct 2013.

<<http://www.hudsonvalley.org/historic-sites/montgomery-place>>.

"Poets' Walk." *Scenic Hudson*. N.p.. Web. 7 Oct 2013.

<<http://www.scenichudson.org/parks/poetswalk>>.

"Olana State Historic Site." *New York State Office of Parks, Recreation, and Historic*

Preservation. N.p.. Web. 7 Oct 2013. <<http://nysparks.com/historic-sites/23/details.asp&xgt;>>.

"Our Story." *Tousey Winery*. N.p.. Web. 7 Oct 2013. <<http://www.touseywinery.com/our-story/>>.

"Overview." *Thomas Cole National Historic Site*. N.p.. Web. 7 Oct 2013.

<<http://www.thomascole.org>>.

Jen W.

Regarding the wayside interpretive signs Poet's Walk was the primary focus for the Midterm Case Study. The design of the sign will include the history prior to the creation of the park, the different features the park provides, a map of the trails including their length and different spots where visitors can stop and rest, and the different types of nature surrounding the park. Additionally the sign will include a picture of the landscape of the park. The sign will be placed at the entrance of the park so visitors will have a chance to educate themselves on the history of the park and gain insight on the trails prior to their visit. The sign will be beneficial because it will prevent visitors from getting lost on the trails and also encourage and excite them to learn about the history and see the nature of the park.



Regarding the Final Case Study my role was to develop and create the wayside exhibit panels for each of the key sites in my groups sector. As stated above for the Midterm Case Study I specifically focused on the key site Poet's Walk. For the other 4 key sites I used similar methods and approaches I took with creating the sign for Poet's Walk.

Concerning Montgomery Place I decided to incorporate the history as well as a brief description of what one can do while visiting this site. I also included pictures of the estate and gardens. When creating this sign my goal was to make it accessible for all visitors in addition to educate the visitors on all the opportunities they can take advantage of when touring this site and the history.



For the key site Tousey Winery I again included the history of how the business formed and what one can do when they visit this site. I also included pictures of their different wine brands and grapes. My goal while creating this site was to add images that highlighted the elegance and peacefulness of this site.



In regards to the key site Olana State Historic Site I wanted the sign to highlight the picturesque landscape as well as educate the visitor of what the site consists of. I added a brief history of the site as well as a summary of what one can do while visiting.



For the key site Cedar Grove I emphasized Thomas Cole's role in the site through the sign as well as educated the viewers on what they could do while visiting the site. I added pictures of the house, the view, and one of the many paintings made inspired by Cedar Grove.



For the final key site Bailiwick Ranch and Zoo I briefly summarized what one can do while visiting the site such as horseback riding, playing games, and meeting the animals. I also included a picture of the exclusive Bengal Tiger from the zoo as well as the perspective one would receive when participating in the trail rides at the zoo.



Regarding the Final Case Study my role was to develop and create the wayside exhibit panels for each of the key sites in my groups sector. For the Midterm Case Study the key site Poets' Walk was specifically focused on. For the final I created signs for the other 5 key sites and used similar methods and approaches I took when creating the sign for Poet's Walk. Each sign includes a brief history of the site as well as a summary of events, activities, and opportunities visitors can do at that site. I intend on placing all of the signs near the entrance of the site that way visitors will have insight of what is involved in the site prior to entering. I believe all of these signs will be beneficial in helping visitors understand the importance of these sites as well as allow them to take advantage of the opportunities these sites provide them with.

References:

- *Bailiwick Ranch & Discovery Zoo*. N.p.. Web. 7 Oct 2013. <<http://www.bailiwickranch.com>>.
- Canalway, Erie. National Park Service U.S. Department of the Interior, "The Wayside Companion: A Guide To Developing Outdoor Exhibits." Accessed October 14, 2013.
- [https://ilearn.marist.edu/access/content/group/1bcd8740-5bb8-41cf-a57e-5148879b3ed1/Sample Itineraries, Case Study/ErieCanalwayWaysideCompanion10-15-07.pdf](https://ilearn.marist.edu/access/content/group/1bcd8740-5bb8-41cf-a57e-5148879b3ed1/Sample%20Itineraries,%20Case%20Study/ErieCanalwayWaysideCompanion10-15-07.pdf).
- *Montgomery place*. (n.d.). Retrieved from <http://www.hudsonvalley.org/historic-sites/montgomery-place>
- *Montgomery place - rhinebeck, ny - early 19th century estate*. (n.d.). Retrieved from <http://www.city-data.com/articles/Montgomery-Place-Rhinebeck-NY-Early-19th.html>
- Scenic Hudson, "Poets' Walk." Accessed October 14, 2013. <http://www.scenichudson.org/parks/poetswalk>.
- "Our Story." *Tousey Winery*. N.p.. Web. 7 Oct 2013. <<http://www.touseywinery.com/our-story/>>.
- "Overview." *Thomas Cole National Historic Site*. N.p.. Web. 7 Oct 2013. <<http://www.thomascole.org>>.

Aimee Dweck

History of the George Clinton Bridge to Rip Van Winkle

The George Clinton Bridge, also known as the Kingston-Rhinecliff Bridge was constructed during the years 1954 to 1957. Originally, it was a ferry, and during its first 190 years only private companies operated the ferry. “During World War II, decreased traffic due to gasoline rations led to losses, and at the end of 1942, the private ferries ceased operation after nearly two centuries of uninterrupted service.” After the war, the locals expected the cross-Hudson traffic to increase, but instead supported a bridge rather than a ferry service. This idea first came about in 1944 to connect Kingston and Rhinecliff. After many vetoes Thomas Dewey finally approved of the Wicks-Hatfield Act which allowed design studies to begin. The bridge is about 800 feet and 7,793 feet long. In 1999 the bridge was renamed the “George Clinton Kingston-Rhinecliff Bridge” to remember and honor New York State’s first governor.

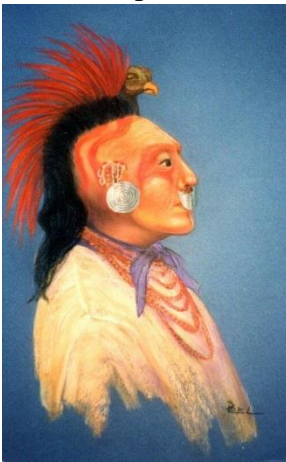


The Rip Van Winkle Bridge is the remaking of the Catskill-Hudson Bridge. Originally Ellis W. Bentley wanted to build a bridge between Catskill, Greene County and Hudson, Columbia County. However Franklin D. Roosevelt who was the governor at the time vetoed the bill claimed that they didn’t have the authority to finance construction. Instead they applied for a new authority in loans to the Reconstruction Finance Corporation (RFC) to rebuild the Catskill-Hudson Bridge. There was some controversy about building the bridge, which delayed construction. The actual bridge was

built during the years of 1933-1935. The bridge itself cost \$2.4 million and unfortunately three lives were taken. The bridge is 800 feet wide and 5,040 feet in length made completely by steel.

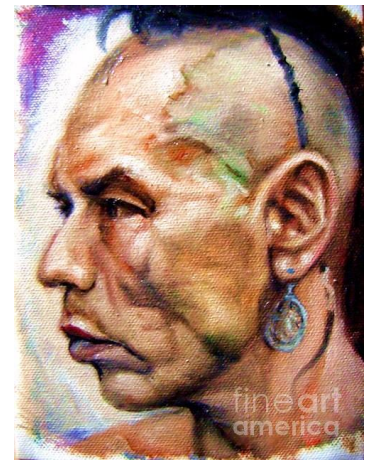


The Dutch were the first to arrive in this sector and then there were also Mohicans. The Mohicans stayed in Greene County. Later on there were Catskill Indians, who were part of the Algonquin Nation, built many villages in the Catskill area. Moving



towards Columbia County, the Mahicans were the Native Americans who were on this part of the sector. The Mahicans welcomed Henry Hudson when he arrived, and that friendliness continued over the years. In Ulster County Thomas Chambers handed some alcohol to an Indian for doing some work for him. The Native

American accidentally fired a gun which led to a whole bunch of white men firing and killing many of them. The following day five hundred Indians surrounded the fort; and they saw that houses barns and crops were burned as well as animals were killed. Later on the Mohawks and the Mohican Indians decided to come up with a truce on May 25, 1660.



These two bridges cross a large area of the Hudson River Valley, where many tribes have stepped foot. Overall, the Dutch were the first to settle here on the sector, but the Mohicans, Mohawks, and Machians also had a major role in the history of this area.

The two bridges themselves were built for amazing purposes and just seeing the structure and is mesmerizing and worth learning more about.

Work Sited

Collier , Edward . "Native Americans of Columbia County ." Kinderhook and its Indians . www.usgennet.org/usa/ny/county/columbia/natives/index_natives.htm (accessed October 15, 2013).

"Kingston-Rhinecliff Bridge (NY 199)." New York Area Roads, Crossings and Exits. <http://www.nycroads.com/crossings/kingston-rhinecliff/> (accessed October 15, 2013).

"Rip Van Winkle Bridge (NY 23)." New York Area Roads, Crossings and Exits. <http://www.nycroads.com/crossings/rip-van-winkle/> (accessed October 15, 2013).

Rockwell, Rev. Charles. "Chapter 3 - Ulster County - The Catskills And The Region Around (1867)." Welcome to the Catskill Archive.

<http://www.catskillarchive.com/rockwell/3.htm> (accessed October 15, 2013).

"The History of Greene County, NY ." Greene County, NY .

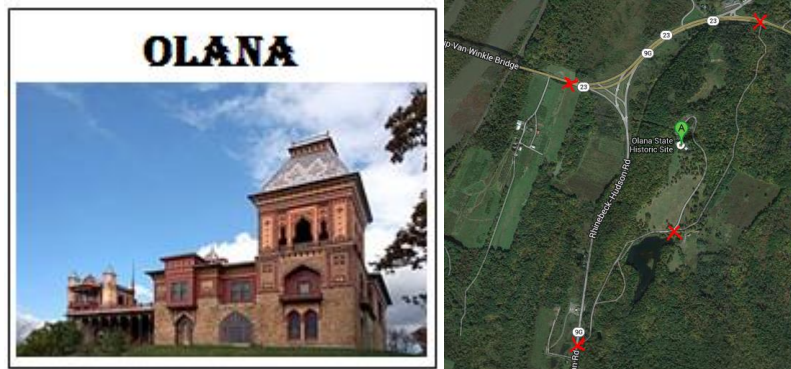
greenegovernment.com/about-greene/history/ (accessed October 15, 2013).

Kristen R.

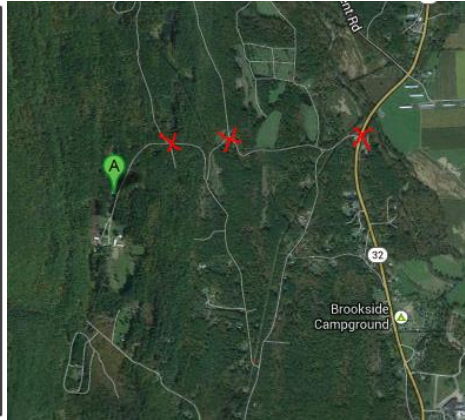
From George Clinton to Rip Van Winkle, there are many historical sites to see. These sites include Olana, Bailiwick Ranch, Tousey Winery, Thomas Cole house, Poets' Walk, and Montgomery Place. In order for tourists to find these great sites, highway route markers are needed. The location, materials the signs are made of, and what is on the sign are crucial in order to attract tourists. These signs will be located on major roads and highways, including 9G and Albany Post Road, leading up to the attraction.

Historical sites have black lettering. Attractions that are geared towards children and schools will be in blue. The signs in green will be places older people, maybe even couples, can go to. This will make things easier for tourists. They will have already figured out what kind of sites they want to see. If they have children they will know to follow the blue signs, maybe even black. If they are a couple, just married or retired, they could easily follow the green signs.

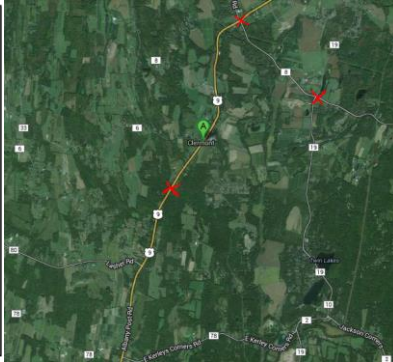
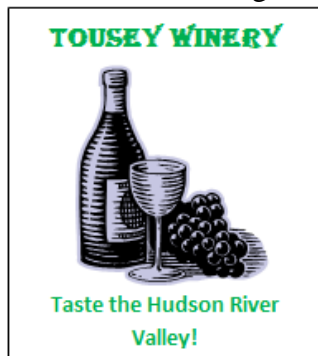
Olana is a big tourist attraction between these two bridges. The highway marker will have a picture of the house. By having this picture, tourists will be attracted by the beauty of the home. The unique architecture will lure most anyone in. It is truly breath taking. Olana State Historic Site will have four highway route markers. One will be on the bridge to attract tourists coming over. The next sign will be on 9G and Rhinebeck-Hudson Road. The third sign will be on the Olana State Historic Site. The final sign is located 9G and Claverack Road.



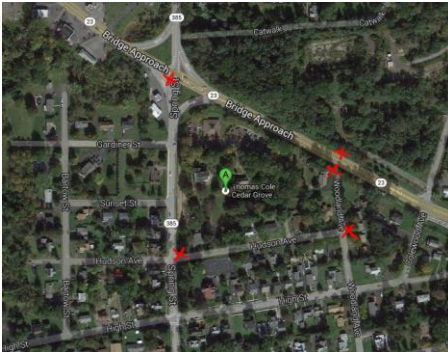
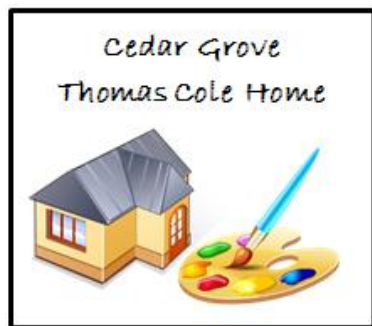
Bailiwick Ranch is another attraction. On the sign there is a horse, a tiger, and a zebra. This will attract not only parents, but children as well. On the bottom of the sign it will say "Come Discover" because it is also a discovery zoo. For parents, this says that it is educational. Kids will learn something but still have fun. Three highway route markers will be placed for the Bailiwick Ranch and Zoo. The first one is located on Castle Road. The second is at the intersection of Castle Road and Game Farm Road. The third is located on main road 32 and Game Farm Road.



Tousey Winery is a family owned vineyard in the Hudson River Valley. The wine glass symbolizes the delicious and great quality wine one can have at the vineyard. The grapes represent the fresh, homemade wine. Tousey Winery will be three highway route markers. The first is located at the intersection of Blue Hill Road and Route 9. The second is between 19 and 8. The third sign is on Route 9 and Albany Post Road.

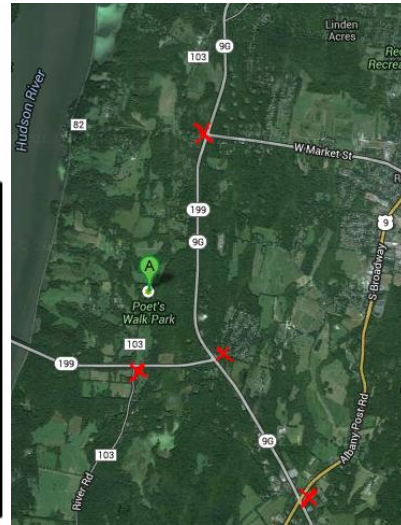


Thomas Cole was the founder of the Hudson River School of painting, a group who painted the Hudson River Valley. On this highway marker there will be a house and a paint brush. The paint brush will symbolize Thomas Cole's love for painting. This area is rich and influential in art history; tourists will know that this is a home of an artist. Five highway route markers will be placed for Cedar Grove. Two will be placed on the bridge approach, facing both directions. One will be located on the bridge approach and Spring Street. The fourth marker is at the intersection of Spring Street and Hudson Avenue. The fifth highway marker is at the intersection of Hudson Avenue and Woodland Avenue.

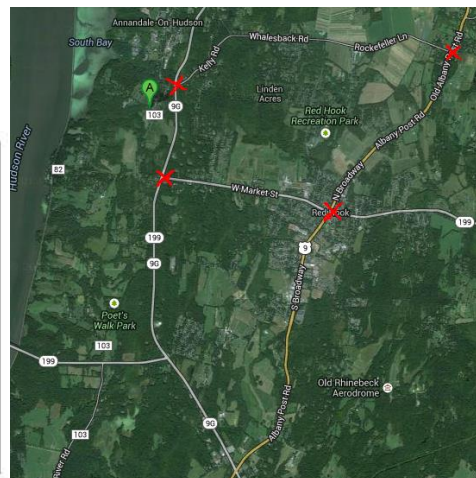


Poets' walk, located in Red Hook, is known for the beautiful and somewhat romantic landscape. The highway sign will have two people holding hands, which symbolizes this romantic ambiance. The silhouette represents the private park, where

couples can cherish moments. Four highway route markers will be placed for Poet's Walk. One will be placed when exiting the bridge and the intersection of River Road. This will attract visitors from the bridge. The next marker will be on the same road and the intersection of 9G. The third will be at the intersection of Albany Post Road and 9G. The final marker will be located farther up 9G, at the intersection of West Market Street.



Montgomery Place is known for the beauty of its landscape and estate. To show this off to tourists, I will have a picture of the place itself. This picture I have included shows the colonial architecture and old fashion cars. Montgomery place will have four highway route markers. The one closest to the place is located on Kelly Road and 9G. The second sign is placed at the intersection of West Market Street and 9G, next to the sign for Poet's walk. The third sign will be at the intersection of West Market Street and North Broadway. The fourth marker is between Rockefeller Lane and Old Albany Post Road.



These highway route markers will tell tourists where they should visit in our sector. They will lead them to beautiful landscapes, unique architecture, and romance of art history.

References

Bailiwick Ranch & Discovery Zoo. Accessed October 10, 2013.

<http://www.bailiwickranch.com>.

"Montgomery Place ." Historic Hudson Valley. Accessed October 10, 2013.

<http://www.hudsonvalley.org/historic-sites/montgomery-place>.

"Poets' Walk." Scenic Hudson. Accessed October 10, 2013.

<http://www.scenichudson.org/parks/poetswalk>.

"Olana State Historic Site." New York State Office of Parks, Recreation, and Historic

Preservation. Accessed October 10, 2013. <http://www.nysparks.com/>

"Our Story." Tousey Winery. Accessed October 10, 2013.

<http://www.touseywinery.com/our-story>.

"Overview." Thomas Cole National Historic Site. Accessed October 10, 2013.

<http://www.thomascole.org>.

Regina Stewart

Tourism Development Organizations and Strategies

The area between the George Clinton Memorial Bridge and the Rip Van Winkle Bridge is a historic and beautiful region. This sector holds a great deal of art history based on romanticism and the surrounding Hudson River, Catskill, Adirondack and White Mountain views. As a place of Hudson River School history, gorgeous sceneries and exciting experiences, the sector between the George Clinton Memorial Bridge and the Rip Van Winkle Bridge is an area that should be made readily available to visitors. All of our sites have personal websites with descriptions, directions and contact information. Our sites can also be found on their corresponding counties' website and other online sources. Social media plays a vital role in our sites Tousey Winery and Olana. These two sites have both well-developed Facebook and Twitter pages. Brochures and other tactile forms of advertisement are also available to promote these sites. Although there is a great deal of tourism promotion in our sector, more strategies are possible.

Our first key site Poets' Walk Park is presented to the public in several effective ways. Poets' Walk is on the Scenic Hudson website and in Scenic Hudson brochures. Scenic Hudson brochures can be found at any of the Scenic Hudson free public parks located around the Hudson River Valley, in the information stands (see image 1). Information stands are located at the entrances to all of the Scenic Hudson Parks. Poets' Walk Park is also presented on two online sites Hike the Hudson Valley.com and H/Vnet.com which are both full of information about the site including pictures and directions. I was surprised to find that the Poets' Walk Park information is not located on the Dutchess County Tourism website. I would suggest that the Dutchess County

Tourism website add Poets' Walk Park to their list of outdoor parks. I would also suggest that Poets' Walk create a Facebook page to increase awareness on what the park has to offer. Finally I would recommend Poets' Walk to be added to the New York Walk Book which it is currently absent from.



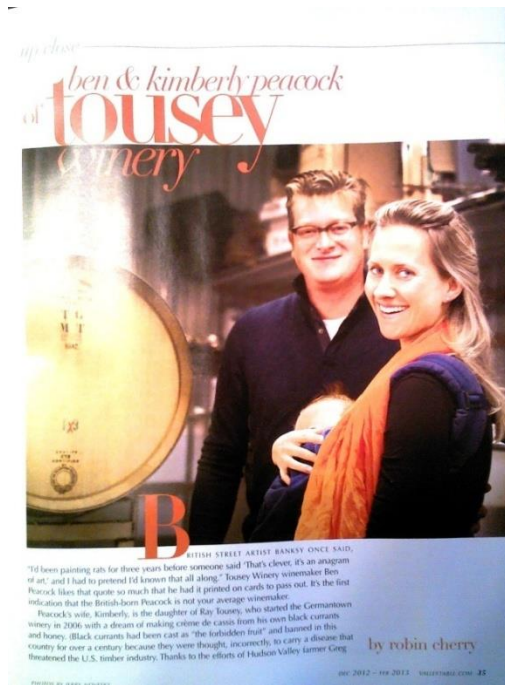
(Image 1: example of information stands at Scenic Hudson Parks)

Montgomery Place, our second key site, is a held highly in the Hudson River Valley as one of its prime historical houses looking over the Hudson. It is accessible through Trip Advisor, Rhinebeck at a Glance, Historic Hudson Valley, Hudson River Valley National Heritage Area, and Dutchess County Tourism. Montgomery Place does have a Facebook for its neighboring farmers market, but not for the historical house, so this would be something the site could do to connect to a greater amount of people.



(Image 2: Visitors on the grounds of Historic Montgomery Place)

Our third key site is The Tousey Winery located in Germantown. The Winery has its own website *touseywinery.com* where visitors can find all the information they need to know about the site. Tousey is promoted on the *Hudson Valley Magazine* website. It is also publicized by Trip Advisor and Yelp who present a long list of outstanding reviews for the site. The *Valley Table Magazine* wrote a tremendous article about the Tousey Winery and there owners Ben and Kimberly Peacock in November 2012 (see image 3). The winery has a wonderful Facebook page with very effective advertising. Another useful advocacy for the Tousey Winery is the Columbia County Tourism website, providing a blurb about the site, the address, and a link to their site. This site had very productive exposure to the public although I would make the recommendation that they present themselves on billboards around the Hudson River Valley.



(Image 3: Owners Ben and Kimberly Peacock in the Valley Table Magazine)

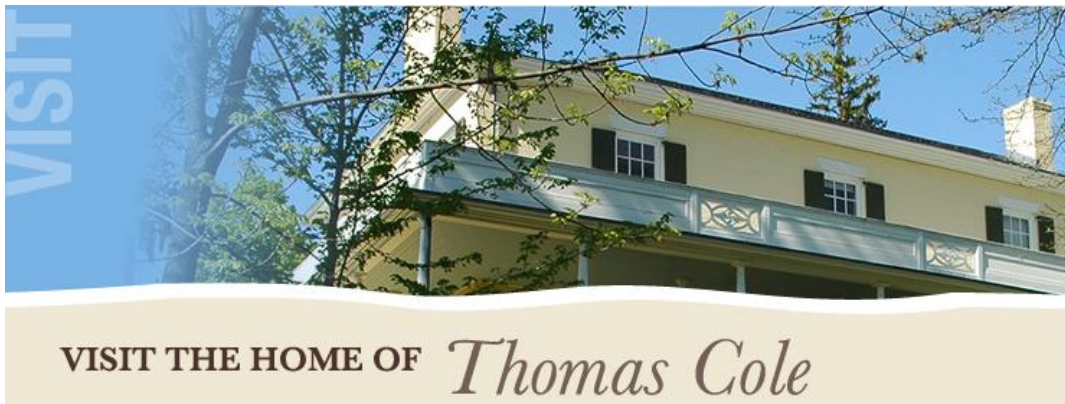
Pictures of the beautiful Persian-inspired Olana State Historic Site mansion can be found all over the Hudson River Valley and its supporting tourism websites. Olana has its own website *Olana.org*, a very user-friendly site that explains the parks information including a calendar of upcoming events. Other websites that further Olanas tourism development are the New York State Office of Parks, Recreation, and Historic Preservation, Trip advisor, HV/ Net, and Rhinebeck at a glance. Olana has a well organized Facebook and twitter page that covers social media aspect well. Olana State Historic Site has many strategies for promoting tourism to their location. I feel the most effective way they further tourism to their site is by being a part of Scenic Hudson. Like Poets' walk, Olana is part of the Scenic Hudson website and brochure organization of tourism. Once a person visits a Scenic Hudson site they have access to a detailed brochure which allows them to explore all of the other Scenic Hudson Parks offered to the public.



(Image 4: Olana State

Historic Site)

Thomas Cole National Historic Site our fifth location is well represented through the online community. Like our other locations, the Thomas Cole Historic Site has its own website for visitors to explore. Other sites that encourage tourism to the Thomas Cole National Historic Site include Trip Advisor, Hudson River Valley National Heritage Area, and the Greene County Tourism Website. The Cole house has a helpful Facebook page and promotional websites but should strategize to improve their ads in magazines and articles in newspapers to increase their tourism.



(Image 5: Advertisement for the Thomas Cole National historic site)

Our final site Bailiwick Ranch & Discovery Zoo has its own website bailiwickranch.com and an effective Facebook page. Its tourism strategies include the

Greene County Tourism website as well as Trip Advisor, Yelp, and I Love NY websites. I would suggest Bailiwick Ranch & Discovery Zoo organize some kind of arrangement with Hudson Valley School Districts to help advertise and improve their family and fieldtrip tourism.



(Image 6: Bailiwick Ranch & Discovery Zoo

Advertisement)

To further tourism to these sites, tourism managers should consider adding a Facebook, Twitter or social media page if not already present in their tourism development. Brochures, billboards, radio, and newspaper advertisements are all suggested tourism strategies for the sites that don't already include these aspects. Overall, visiting these sites should be made easy for tourists. The more organized strategies of tourism present, the more visitors to the surrounding sites, lodging, dining, and counties in the area.

Itinerary

For our itinerary, we focused on creating a convenient, comfortable and enjoyable trip for our prospective visitors. In addition to all of our sights we added two dining

destinations, The Historic Blue Store Restaurant and Catskill Point Restaurant, both with spectacular reviews. We also included the luxurious Mount Merino Manor: Bed and Breakfast for our guests to lodge in. For the itinerary we provided a quick view at the overall journey listing the destination points and the approximate arrival times. Detailed directions to and from each sight as well as the amount of travel time were also presented in the itinerary. Finally we included the approximate arrival time and a brief description of what they would be participating in at each site.

Bibliography

“The Hikes,” Hike the Hudson valley.com, accessed October 1, 2013,

<http://hikethehudsonvalley.com/poets-walk/>

HV/Net, accessed October 5, 2013, <http://www.hvnet.com/>

Scenic Hudson, accessed October 1, 2013, <http://www.scenichudson.org/>

Historic Hudson Valley, accessed October 1, 2013, <http://www.hudsonvalley.org/>

Hudson River Valley National Heritage Area, accessed October 1, 2013,

<http://www.hudsonrivervalley.com/Home.aspx>

I love New York, accessed September 28, 2013 <http://iloveny.com/>

Bailiwick Ranch & Discovery Zoo, October 5, 2013, <http://www.bailiwickranch.com/>

Yelp, accessed October 1, 2013, <http://www.yelp.com/biz/bailiwick-ranch-inc-catskill>

Great Northern Catskills of Greene County, September 28, 2013,

<http://www.greatnortherncatskills.com/>

Trip Advisor, accessed October 1, 2013, <http://www.tripadvisor.com/>

Dutchess County Tourism, accessed October 1, 2013, <http://www.dutchesstourism.com/>

Columbia County, *I love NY. Com*, accessed September 29, 2013,

<http://columbiacountytourism.org/>

Ulster County Alive, accessed September 28, 2013, <http://www.ulstertourism.info/>

Final Group Synthesis Essay

With this great history, the sector between the **George Clinton Bridge** and **Rip Van Winkle Bridge** has many **key sites** that highlight the artistic aspect of its area. The first area is the **Poets' Walk**. The Poets' Walk is known as a "romantic landscape" and is meant to celebrate the connection between landscape and poetry. On this walk, a visitor can bird watch, walk their dog, hike, and picnic. **Montgomery Place** is a 19th century estate.

It is a unique place to visit because of its gardens, arboretum, woodlands, orchards, hamlet, and natural features. **Tousey Winery** is the perfect place to relax and enjoy Tousey wines in a candle lit space.

Olana State Historic Site, which was artist Edwin Church's home and studio, is where visitors can go on a house tour around the property, the family's farm, orchards, lake, and Church's studio. The mansion is Persian inspired and filled with Church's sketches, studies, and paintings. **Thomas Cole National Historic Site** was the home and studio of painter Thomas Cole. While here, visitors can go on a guided tour of the house and studio, watch a film about Cole, and walk through the gardens. **Bailiwick Ranch and Zoo** offers horseback riding and a zoo full of exotic animals, perfect for a class fieldtrip or family outing.

Guidebooks were made to help people who are interested in a location find out important information about that site. On these guidebooks, visitors are provided with the contact information, hours, historical description, and information about the site itself.

Guidebooks help to make traveling easier for tourists. They offer the right information about locations in the area they are traveling to.

Regarding the **wayside exhibits**, we developed and created panels for each of the key sites in the sector. For the Midterm Case Study the key site Poets' Walk was specifically focused on. For the final we created signs for the other 5 key sites and used similar methods and approaches taken when creating the sign for Poet's Walk.

Each sign includes a **brief history** of the site as well as a **summary of events, activities, and opportunities** visitors can do at that site. We intend on placing all of the signs near the **entrance** of the site that way visitors will have insight on what is involved at the site prior to entering. We believe all of these signs will be **beneficial** in helping visitors understand the importance of these sites as well as allow them to take advantage of the opportunities these sites provide them with.

Highway route markers were made for each of the key sites in our sector. In order for tourists to find these great sites, highway route markers are necessary and need to **stand out**. Each type of sign will have particular **color** lettering. This will be a convenience for tourists because they will have already figured out what kind of sites they are going see. Highway markers will be placed on strategic roads and locations leading up to the site. This will be shown on Google maps. The location of

highway signs will be placed with a red “x” on the map.

For our **itinerary**, we focused on creating a convenient, comfortable and enjoyable trip for our prospective visitors. In addition to all of our sights we added two dining destinations, The Historic Blue Store Restaurant and Catskill Point Restaurant, both with spectacular reviews. We also included the luxurious Mount Merino Manor: Bed and Breakfast for our guests to lodge in. For the itinerary we provided a **quick view** at the **overall journey** listing the destination points and the approximate arrival times. **Detailed directions** to and from each sight as well as the amount of **travel time** were also presented in the itinerary. Finally we included the **approximate arrival time** and a brief description of what they would be participating in at each site.

We decided to choose **lessons** for a kindergarten class because Aimee is going to be certified from birth to second grade as well as first to sixth grade. We thought that writing these lesson plans would be useful because we haven’t written any like them before and we can use them in the future. Some examples of our lesson plans are a trip to the zoo, a nature scavenger hunt and learning international dances. Through these lessons students are expected to **learn** about themselves and the world while having fun.

Bibliography

Bailiwick Ranch & Discovery Zoo. N.p.. Web. 7 Oct 2013.

<<http://www.bailiwickranch.com>>.

"Montgomery Place ." *Historic Hudson Valley*. N.p.. Web. 7 Oct 2013.

<<http://www.hudsonvalley.org/historic-sites/montgomery-place>>.

"Poets' Walk." *Scenic Hudson*. N.p.. Web. 7 Oct 2013.

<<http://www.scenichudson.org/parks/poetswalk>>.

"Olana State Historic Site." *New York State Office of Parks, Recreation, and Historic Preservation*. N.p.. Web. 7 Oct 2013. <<http://nysparks.com/historic-sites/23/details.asp&xgt;>;

"Our Story." *Tousey Winery*. N.p.. Web. 7 Oct 2013. <<http://www.touseywinery.com/our-story/>>.

"Overview." *Thomas Cole National Historic Site*. N.p.. Web. 7 Oct 2013.

<<http://www.thomascole.org>>.

Canalway, Erie. National Park Service U.S. Department of the Interior, "The Wayside Companion: A Guide To Developing Outdoor Exhibits." Accessed October 14, 2013. <https://ilearn.marist.edu/access/content/group/1bcd8740-5bb8-41cf-a57e-5148879b3ed1/Sample> Itineraries, Case

Study/ErieCanalwayWaysideCompanion10-15-07.pdf.

Scenic Hudson, "Poets' Walk." Accessed October 14, 2013.

<http://www.scenichudson.org/parks/poetswalk>.

"Poets' Walk Trail Map." Accessed October 14, 2013.

http://www.scenichudson.org/sites/default/files/u2/PoetsWalk_webmap.jpg.

(picture)

Hike the Hudson Valley, "Poet's Walk." Accessed October 14, 2013.

<http://hikethehudsonvalley.com/poets-walk/>. (picture)

Collier , Edward . "Native Americans of Columbia County ." Kinderhook and its Indians .
www.usgennet.org/usa/ny/county/columbia/natives/index_natives.htm (accessed
October 15, 2013).

"Kingston-Rhinecliff Bridge (NY 199)." New York Area Roads, Crossings and Exits.
<http://www.nycroads.com/crossings/kingston-rhinecliff/> (accessed October 15, 2013).

"Rip Van Winkle Bridge (NY 23)." New York Area Roads, Crossings and Exits.
<http://www.nycroads.com/crossings/rip-van-winkle/> (accessed October 15, 2013).

Rockwell, Rev. Charles. "Chapter 3 - Ulster County - The Catskills And The Region Around (1867)." Welcome to the Catskill Archive.

<http://www.catskillarchive.com/rockwell/3.htm> (accessed October 15, 2013).

"The History of Greene County, NY ." Greene County, NY .
greenegovernment.com/about-greene/history/ (accessed October 15, 2013).

"The Hikes," Hike the Hudson valley.com, accessed October 1, 2013,

<http://hikethehudsonvalley.com/poets-walk/>

HV/Net, accessed October 5, 2013, <http://www.hvnet.com/>

Scenic Hudson, accessed October 1, 2013, <http://www.scenichudson.org/>

Historic Hudson Valley, accessed October 1, 2013, <http://www.hudsonvalley.org/>

Hudson River Valley National Heritage Area, accessed October 1, 2013,

<http://www.hudsonrivervalley.com/Home.aspx>

I love New York, accessed September 28, 2013 <http://iloveny.com/>

Bailiwick Ranch & Discovery Zoo, October 5, 2013, <http://www.bailiwickranch.com/>

Yelp, accessed October 1, 2013, <http://www.yelp.com/biz/bailiwick-ranch-inc-catskill>

Great Northern Catskills of Greene County, September 28, 2013,

<http://www.greatnortherncatskills.com/>

Trip Advisor, accessed October 1, 2013, <http://www.tripadvisor.com/>

Dutchess County Tourism, accessed October 1, 2013, <http://www.dutchesstourism.com/>

Columbia County, *I love NY. Com*, accessed September 29, 2013,

<http://columbiacountytourism.org/>

Ulster County Alive, accessed September 28, 2013, <http://www.ulstertourism.info/>



✧ <https://www.youtube.com/watch?v=5mU-xR-rsVo>

The Fab Five Can Do It!



**Corinne
Aimee
Jen
Regina
Kristen**

Table of Contents

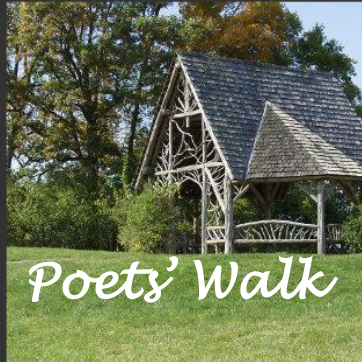
- ✦ Sector Logo (Group)
- ✦ Motto and Banner (Group)
- ✦ Thesis (Group)
- ✦ Summary of Midterm (Group)
- ✦ Lesson Plan (Aimee Dweck)
- ✦ Highway Route Markers (Kristen Romanino)
- ✦ Wayside Exhibits (Jennifer Whittaker)
- ✦ Guide Book (Corrine Cawley)
- ✦ Itinerary (Regina Stewart)



Created by Jen Whittaker



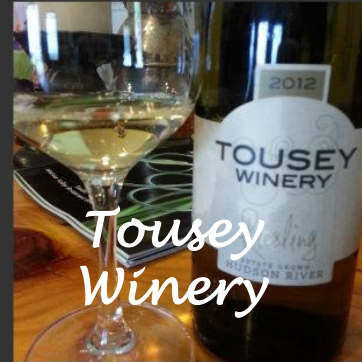
Art History,
and
Landscape,
and Tigers,
oh my!



Poets' Walk



Montgomery
Place



Tousey
Winery



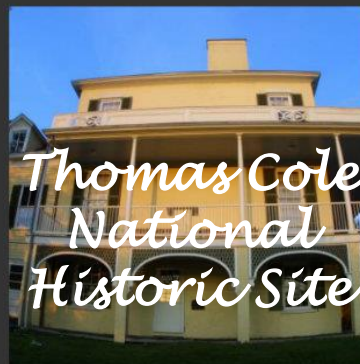
George
Clinton



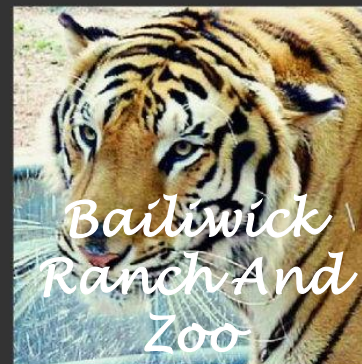
Rip
Van
Winkle



Olana State
Historic Site



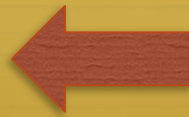
Thomas Cole
National
Historic Site



Bailiwick
Ranch And
Zoo

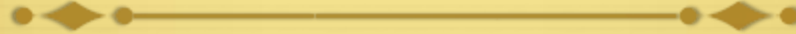
Thesis

- ✦ The area between the George Clinton to Rip Van Winkle bridge provides a historical venture through the world of art, landscape, and attractions. Visiting this area will expose visitors to the history of the Hudson River and romanticism in art history.



*Frederic Edwin
Church, Mt. Katahdin
(Maine) from Lake
Katahdin (1850)*

Summary of Midterm



- ✦ Our sector holds a vast amount of opportunities to educate oneself on the history, art culture, and landscape.

- ✦ History

- ✦ 6 Key Sites

- ✦ Tourism



Rip Van
Winkle
Bridge ↓



↑ George
Clinton -
Kingston
Rhinecliff
Bridge



DUCG is the perfect area to explore the beauty of nature, experience outdoor recreation, educate yourself on historic landmarks, and more. Come, relax, and enjoy all while taking in the breathtaking views and landscapes!

Poets' Walk

A Brief History,

In 1849 the Astor and Delano Families lived on the land that is now Poet's Walk.

Hiring German-Born landscape architect Hans Jacob Ehlers, the land was shaped into a series of outdoor rooms combined with illuminated fields and thick forests. The path known as Poets' Walk was created in honor of literary figure Washington Irving who was known to repeatedly roam this area.

Part of the trail of Poets' Walk

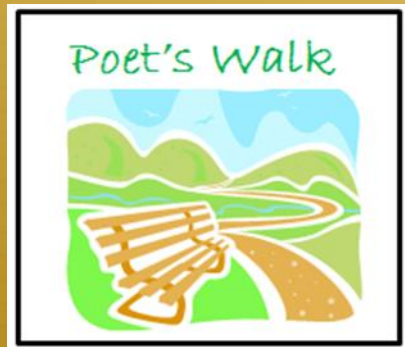


Poets' Walk

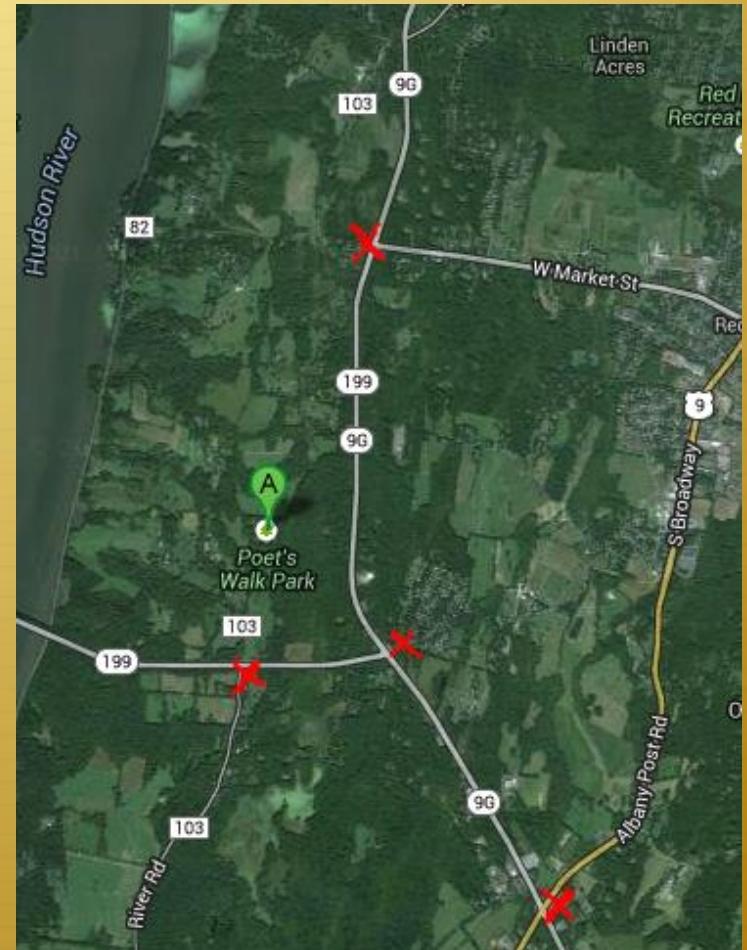
Follow the two mile trail through the woods and meadows and enjoy the scenic sites, Overlook Pavilion, and a rustic Summer House.

Poet's Walk

Four highway route markers will be placed for Poet's Walk. One will be placed when exiting the bridge and the intersection of River Road. The next marker will be on the same road and the intersection of 9G. The third will be at the intersection of Albany Post Road and 9G. The final marker will be located farther up 9G, at the intersection of West Market Street.



Made by Kristen Romanino



Google Map of Highway Route Markers

Lesson Plan for Poets' Walk

Objectives: To have students understand why nature is important and to work together as a class as they are doing that.

Materials Needed: Paper, Colored Pencils

Brief Description: Students will use the area around them to go on a nature scavenger hunt in order to learn the importance of nature. Afterwards the students will participate in a drawing activity.

Lesson:

Students will take a trip to Poet's Walk

Every group of two will be given a piece of paper with a list of items to find in nature. (e.g.: bird, leaf, dirt, branch, grass, rock ,etc.)

Students will go on a nature scavenger hunt as a class. When one person finds an item the class will stop and teacher will explain why the item is important.

After the activity, each pair will draw an item in nature and explain why they chose it and why it is important to our environment.



Poets' Walk

Lesson Plan for Poets' Walk Continued



Source:

<http://www.scenichudson.org/parks/poetswalk>

Standards:

1. Willingly engages in new experiences and activities.
2. Interacts with a variety of materials through play.
3. Initiates conversations, both verbally and nonverbally, about things around them.

Montgomery Place



DUCG is the perfect area to explore the beauty of nature, experience outdoor recreation, educate yourself on historic landmarks, and more. Come, relax, and enjoy all while taking in the breathtaking views and landscapes!

A Brief History,

Montgomery Place is an early 19th century estate. Significantly Montgomery place is the only estate house from the 19th century that is still intact. In 1802 Janet Livingston Montgomery purchased the estate's land and named the house that was built there Chateau de Montgomery after her late husband, General Richard Montgomery. After the death of Janet Livingston Montgomery her brother inherited the property. Later in 1902 a Livingston descendant named General John Ross Delafield took over the property. The estate is best known for its landscape influenced by Andrew Jackson Davis and in 1975 was added to the National Register of Historic Places.

Montgomery Gardens



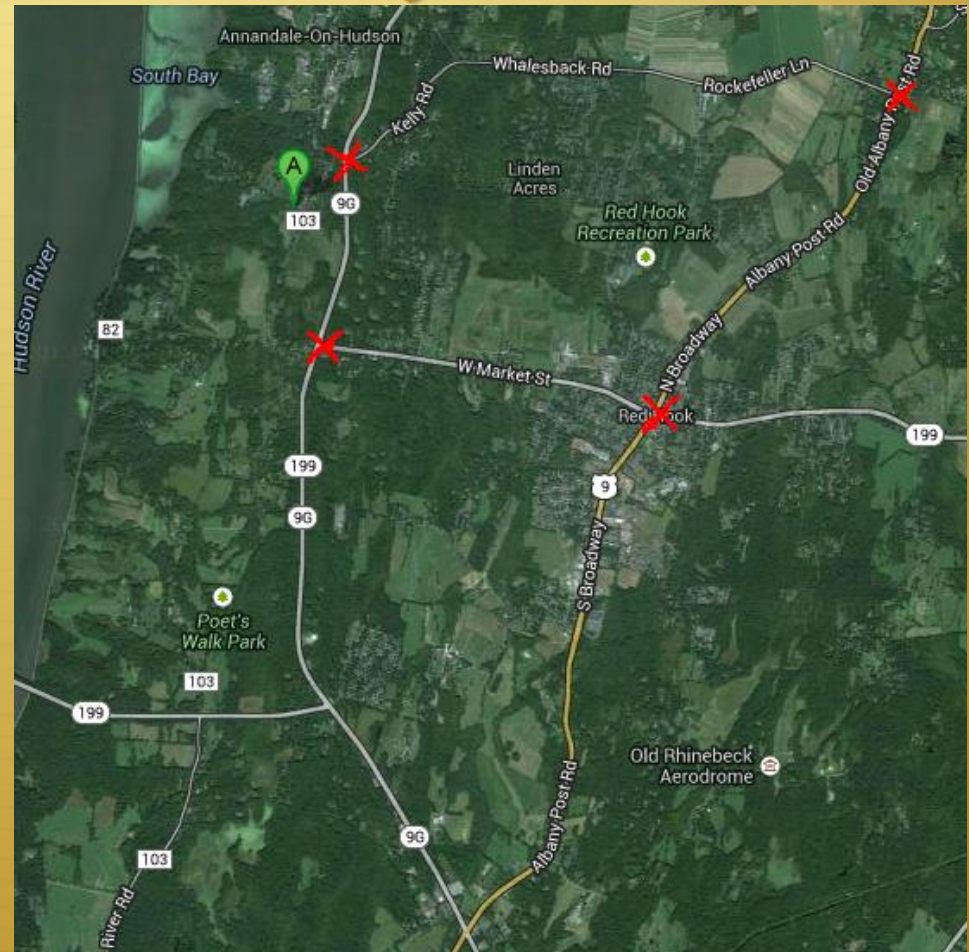
Montgomery House

At Montgomery place you are permitted to stroll through the gardens, arboretum, woodland trails, and the falls of the Sawkill river all while enjoying the picturesque view of the Hudson River. Additionally participate in a house and grounds tour of this neoclassical country historic site.

Montgomery Place

Montgomery place will have four highway route markers. The one closest to the place is located on Kelly Road and 9G. The second sign is placed at the intersection of West Market Street and 9G, next to the sign for Poet's walk. The third sign will be at the intersection of West Market Street and North Broadway. The fourth marker is between Rockefeller Lane and Old Albany Post Road.

Made by
Kristen
Romanino



Google Map of Highway Route Markers

Lesson Plan for Montgomery Place

Title “Be a Bee”

Objectives:

Students will understand what an insects body structure is and see how bees make honey and communicate. The goal is to understand that we all have our own special jobs and different ways of going about them.

Materials Needed: Guide to give a tour at the pollination tour.

Brief Description: Students will learn why insects are important and see their purpose in nature and how it relates to humans. They will then relate it to what makes them special.



Picture of honeybee

Lesson Plan for Montgomery Place Continued

Lesson:

1. Students will go to Montgomery place
2. We will follow the tour guide and play a game to learn what a bee's body structure is
3. Students will then take a tractor down and try different types of honey and see a bunch of bees up close
4. Students will then play a game to see how insects use smells to communicate
5. Once the tour is done, the teacher will sit the students down and ask them what makes them special, how they communicate with one another.

Source:

<http://www.mporchards.com/index.php/school-tours/>

Standards:

1. Describes himself/herself using several different characteristics.
2. Demonstrates awareness of connections between prior and new knowledge.
3. Listens attentively for a variety of purposes (e.g., for enjoyment; to gain information; to perform a task; to learn what happened; to follow directions).

Tousey Winery



DUCG is the perfect area to explore the beauty of nature, experience outdoor recreation, educate yourself on historic landmarks, and more. Come, relax, and enjoy all while taking in the breathtaking views and landscapes!

A Brief History,

Tousey Winery began as a family-run enterprise. Ray Tousey created his family-owned grounds into a vineyard and later passed it down to his daughter Kimberly Peacock and her husband Ken. The winery is fairly new but is notable for its breathtaking views and top quality wines.

*Chardonnay in the
tasting room*



*Fresh picked grapes from the
vineyard*

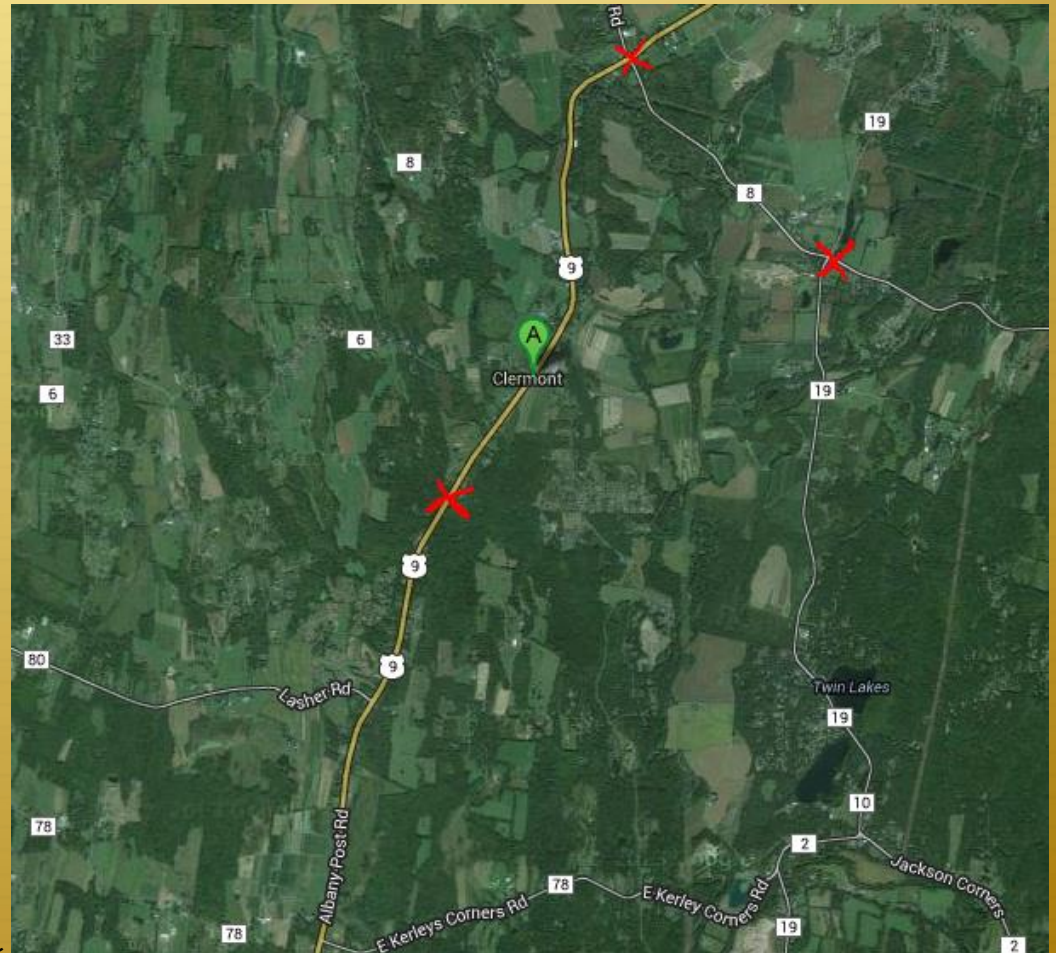
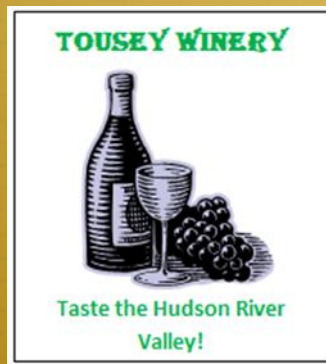
*Tousey Winery's
Riesling grape*



Enjoy the panoramic view of the Hudson River and Catskill Mountains while tasting Tousey Winery's selection of delicious wines.

Tousey Winery

Tousey Winery will be three highway route markers. The first is located at the intersection of Blue Hill Road and Route 9. The second is between 19 and 8. The third sign is on Route 9 and Albany Post Road.



Made by Kristen Romanino

Google Map of Highway Route Markers

Lesson Plan for Tousey Winery

Title: Make your own invention!

Subject(s): History and Art

Objectives: To have students experiment with items and see what they can make so they can see the similarities of using grapes to make wine.

Materials Needed:

Paper, Scissors, Markers, Popsicle Stick, Glue

Brief Description:

Students are going to create a pinwheel out of art supplies.

Lesson Plan for Tousey Winery Continued

Lesson:

1. Students will learn how people use grapes to make wine – like they do in the Tousey Winery!
2. Teacher will hand out precut paper and ask if the students know how to make anything out of paper
3. Teacher will have children color the paper any way they would like.
4. Teacher will teach students step by step how to make a pinwheel

Assessment:

Teacher asks students how this activity was similar to making wine.

Source:

<http://www.touseywinery.com/news-blog/page/2/>

Standards:

- Uses “trial and error” method to figure out a task, problem, etc.
- Engages with peers and adults to solve problems.
- Maintains focus on a task.

DUCG is the perfect area to explore the beauty of nature, experience outdoor recreation, educate yourself on historic landmarks, and more. Come, relax, and enjoy all while taking in the breathtaking views and landscapes!



Olana State Historic Site

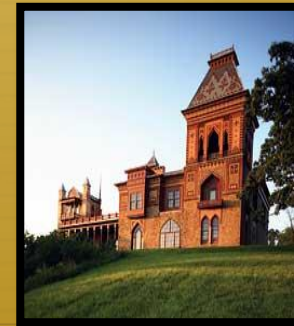
A Brief History,

Notable landscape painter and Hudson River School artist Frederic Edwin Church first sketched on the property that has become Olana State Historic Site. Once married and stable he purchased the land that is now Olana and added cottages, gardens, orchards, trees and created a lake, making this his home. Throughout the years he continuously added to it. Upon his death his son, Louis, and his wife, Sally inherited the land and then later a nephew took it over. Now New York State owns the property and it is opened to the public.



*Olana's
view*

Learn about the history through guided house tours, view pieces in the gallery, and visit all the sites located on the grounds while enjoying the picturesque landscape.



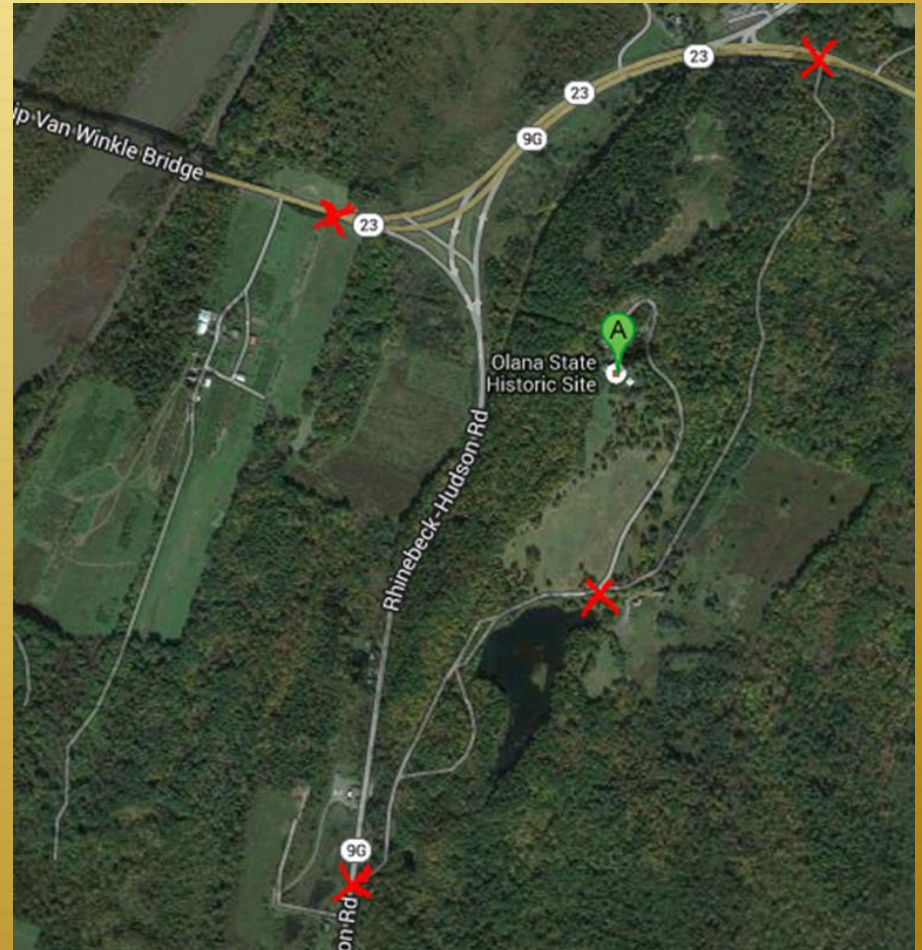
Olana

Olana

Olana State Historic Site will have four highway route markers. One will be on the bridge to attract tourists coming over. The next sign will be on 9G and Rhinebeck-Hudson Road. The third sign will be on the Olana State Historic Site. The final sign is located 9G and Claverack Road.



Made by Kristen Romanino



Google Map of Highway Route Markers

Lesson Plan for Olana State Historic Site

Title: International Dance at Olana

Subject(s): Art and History

Objectives: To have children partake in dance lessons and learn about the history from where the dances the came from.

Brief Description: Students will learn to dance in different styles around the world after they learned the history of the dances.

Standards:

1. Experiments and seeks additional clarity to further his/her knowledge.
2. Transitions with minimal support between routine activities and new/unexpected occurrences.
3. Offers support to another child or shows concern when a peer seems distressed.
4. Willingly engages in new experiences and activities.
5. Demonstrates knowledge of his/her own uniqueness (talent, interests, preferences, gender, culture, etc.).

Source: <http://olana.org/calendar.php>

Lesson Plan to Olana State Historic Site

Lesson:

1. Students will watch YouTube clips of dances that are from the countries Ireland, Scotland, Russia, the Middle East, Mexico, France, Scandinavia, China and Africa.
 2. Teacher will then read a book about the history of dance.
(Color Dance by Ann Jonas)
 3. Students will take a field trip to Olana State Historic Site
 4. Students will take dance lessons that is for beginners to learn different types of international dances that are going to be offered
 5. Students will then what people in their own culture dance their style of dance.
- Assignment: Students will do a culture project to find out where they are from. Students will then share what traditions they do in their families that relates to their culture.

DUCG is the perfect area to explore the beauty of nature, experience outdoor recreation, educate yourself on historic landmarks, and more. Come, relax, and enjoy all while taking in the breathtaking views and landscapes!



Cedar Grove

A Brief History,

Prestigious artist, Thomas Cole purchased property at Cedar Grove in 1836. The landscape inspired him to create many of his pieces in the Hudson River School. When Cole passed his wife and children took over the property. His legacy lasts with the landscape and is now opened for the public to enjoy.

*Charles Herbert Moore's
Cedar Grove*

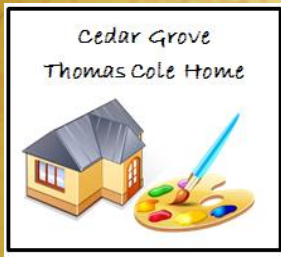


View of the Catskill Mountains

Cole House



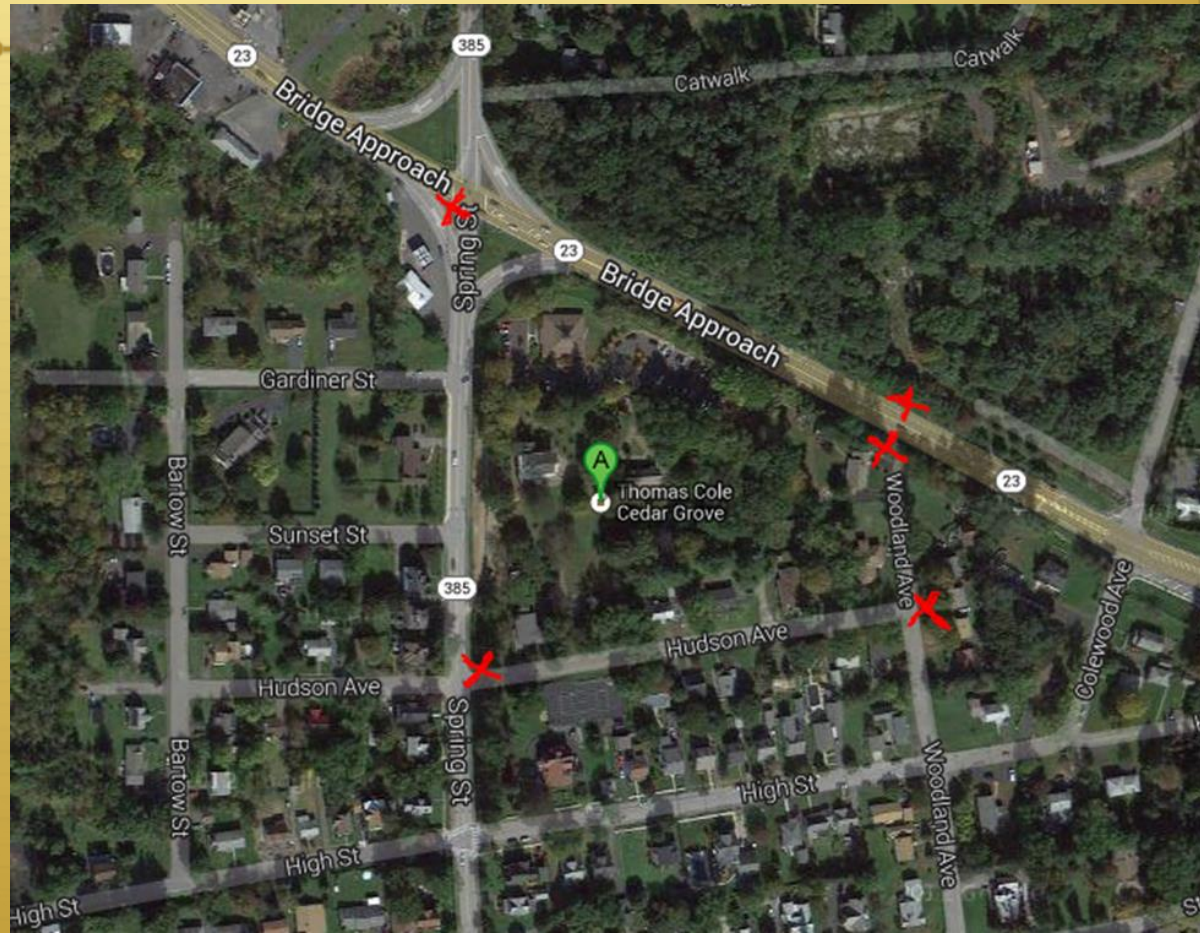
View Thomas Cole's home and studio through guided tours. Become exposed to his art and inspiration by strolling through flower gardens and taking in the picturesque view of the Catskill Mountains.



Made by Kristen Romanino

Cedar Grove

Five highway route markers will be placed for Cedar Grove. Two will be placed on the bridge approach, facing both directions. One will be located on the bridge approach and Spring Street. The fourth marker is at the intersection of Spring Street and Hudson Avenue. The fifth highway marker is at the intersection of Hudson Avenue and Woodland Avenue.



Google Map of Highway Route Markers

Lesson Plan for Cedar Grove

Objectives:

To see where Thomas Cole lived: his home, landscape and his workspace.

Brief Description:

Students will go on a tour to see the historic home as well the studio and grounds.

Lesson:

1. Students will go to Cedar Grove's Site
2. Students will go to the porch of his home where they can see the Catskill Mountains
3. Students can see the rooms and look for the differences in his house compared to our houses today
4. Students then see the "Old Studio" where many of his paintings were painted
5. Students then compare his house and grounds compared to their house.

Source:

<http://www.thomascole.org/school-programs/>

Standards:

Demonstrates awareness of connections between prior and new knowledge.
Expresses an interest in learning about and discussing a growing range of ideas.
Actively explores how things in the world work.
Investigates areas of interest.

Bailiwick Ranch and Zoo

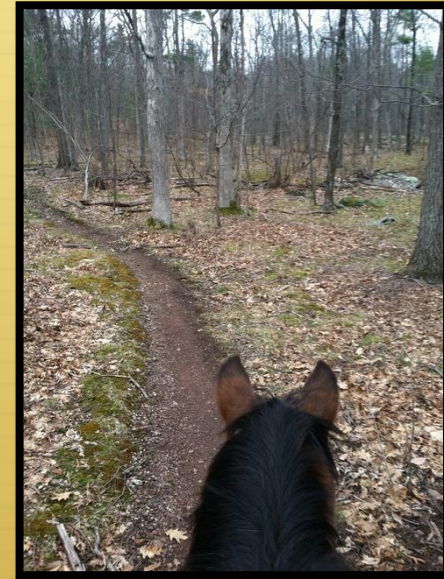


DUCG is the perfect area to explore the beauty of nature, experience outdoor recreation, educate yourself on historic landmarks, and more. Come, relax, and enjoy all while taking in the breathtaking views and landscapes!

Bailiwick Ranch and Discovery Zoo provides you with the opportunity to meet exotic and farm animals, horseback ride, and participate in a game of paint ball.

The farm was established in 1983 and continues to expand, adding new animals and activities.

Titan, the Bengal Tiger

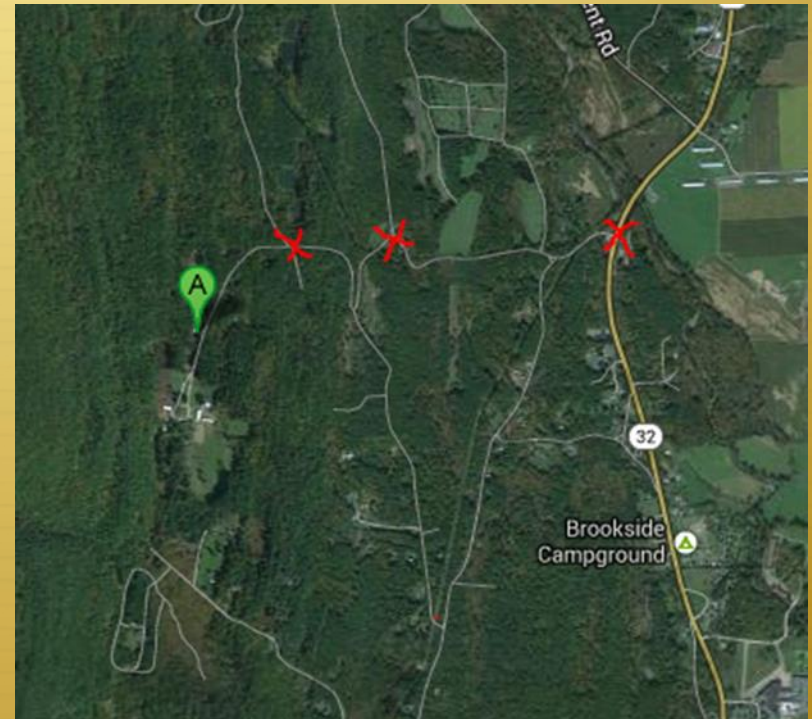


Trail Rides

Come to Bailiwick Ranch and Zoo and horseback ride through scenic mountain routes, feed the animals, and play games. Enjoy a day out making memories that will last a lifetime!

Bailiwick Ranch and Zoo

Three highway route markers will be placed for the Bailiwick Ranch and Zoo. The first one is located on Castle Road. The second is at the intersection of Castle Road and Game Farm Road. The third is located on main road 32 and Game Farm Road.



Google Map of Highway Route Markers

Made by Kristen Romanino

Lesson Plan for Bailiwick Ranch and Zoo

Title: Zoo Day

Objectives: Have students see and feed the animals that they enjoy the most. Understand that there are different types of animals and they eat different foods and like different weather etc.

Brief Description: Students will observe all different types of domestic animals and feed them. Students will be able to understand that not all animals act the same, look the same, or have the same exact needs.

Lesson:

1. Students will go to the Bailiwick Ranch and Zoo
2. Students will look at different animals and pick out the ones that they like
3. Students will group which animals are alike
4. Students will feed the animals as they go along
5. Students will be able to see that the animals are not all the same

Lesson Plan for Bailiwick Ranch and Zoo Continued

Assessment:

Have students act out different animals as well as telling the class what they eat, if they are a mammal, etc. See if student has the right information and see if the other students can guess what the animal is.

Source:

<http://www.bailiwickranch.com/zoo/meettheanimals.html>

Standards:

Engages with peers and adults to solve problems.

Applies rules in new, but similar situations.

Listens attentively for a variety of purposes (e.g., for enjoyment; to gain information;

to perform a task; to learn what happened; to follow directions).

Engages in pretend and imaginative play – testing theories, acting out imagination.

Fab Five Itinerary

Quick view of your weekend

Day one:

11:00 am	Poets' Walk
12:00 pm	Picnic lunch at Poet's Walk
1:30 pm	Montgomery Place
4:30 pm	Tousey Winery
6:60 pm	Historic Blue Store Restaurant
9:00pm	Mount Merino Manor: Bed and Breakfast



Day two:

9:00 am	Olana
11:30 am	Cedar Grove
1:00 pm	Catskill Point Restaurant
2:30 pm	Bailiwick Ranch & Discovery Zoo
5:00 pm	Trip home



Directions from the George Clinton Memorial Bridge to Poets' Walk

1.9 mi, 3 minutes

1. Head southeast on NY-199 E/Kingston Rhinecliff Bridge
2. Continue to follow NY-199 E
3. Turn left onto River Rd
4. In 0.6 mi Poets' Walk will be on your left



11:00am

Visitors will take the main trail passing through the “outdoor rooms” landscape. Once they reach the hand crafted wooden pavilion and benches, visitors will enjoy a picnic lunch with a spectacular overlook view of the Hudson River and George Clinton Memorial Bridge. After lunch, guests can take a trip through two further riverside trails.

Poets' Walk

<http://www.scenichudson.org/parks/poetswalk>

River Road

Red Hood, NY 12571

Phone: (845) 473-4440

- ✦ **Hours:** Park opens year-round daily at 8:30 a.m. It closes as follows — Nov.1-Mar. 13: 6 p.m.; Mar. 14-Memorial Day: 7:30 p.m.; Memorial Day-Labor Day: 8:30 p.m.; Labor Day-Oct. 31: 7:30 p.m. Allow 2 hours.
- ✦ **Historical Descriptions:** In 1849 members of the Astor and Delano families, who lived on adjacent estates, commissioned German-born landscape architect Hans Jacob Ehlers to make improvements on these grounds. The classic wooded vistas, sunlit fields and thick forest were the main focus of Ehlers' vision for the property. He fashioned a series of "outdoor rooms," using stands of foliage and stone walls to break up the landscape, which includes rolling meadows, forests, and a ravine. Ehlers also created a shaded, streamside path, dubbed Poets' Walk in honor of Washington Irving and other literary figures who reputedly strolled here.
- ✦ **The Site:** Today, the park features two miles of trails through woods and rolling meadows with rustic cedar pavilions, footbridges, and benches. The park is buffered on all sides by 780 acres of private lands under conservation easements that ensure the landscape's protection from development. There is bird watching, dog walking, hiking, and picnicking.

Directions from Poets' Walk to Montgomery Place

2.2 mi, 4 minutes

1. Head north on River Rd toward La Bergerie Ln
2. Turn left onto Gardener Way
3. Take the 1st right onto Davis Way
4. Montgomery Place will be on the left



1:30pm

Guest will experience an indoor house tour, learning about the history and significance of the mansion.

Visitors will also enjoy an outdoor grounds tour viewing the well-known Andrew Jackson Downing's landscape and architecture

Montgomery Place

<http://hudsonvalley.org/montgomeryplace/index.htm>

River Road, Route 103

Annadale-on-Hudson, NY 12504

Phone: (845) 758-5461

- ✦ **Hours:** May-October: weekends only, 10 AM - 5 PM
Admission is \$7.00 for adults, \$6.00 for seniors, \$4.00 for children 5-17, and children under 5 are free. Grounds fee is \$4.00.
- ✦ **Notes:** Reservations needed for group tours. Call ahead for Special Events.
- ✦ **Historical Description:** Montgomery Place was established by Janet Livingston Montgomery, widow of Revolutionary War hero General Richard Montgomery. She built the Federal-style house in from 1804 to 1805 and established a successful commercial nursery on the property. During the first half of the nineteenth-century, her descendants created one of the most beautiful estates in the nation. The era's greatest designers, architect Alexander Jackson Davis and landscape designer Andrew Jackson Downing, assisted them in their endeavor. In the 1930s, the generation living there created a twentieth-century horticultural showcase, one that continues to flourish today.
- ✦ **The Site:** The estate features guided tours of the restored mansion, exquisite gardens with greenhouse, nature walks and trails, and a museum and garden shop. Picnicking is encouraged and permitted anywhere on the estate. An extensive program of special events takes place throughout the year. Montgomery Place also includes an A.J. Davis designed mansion, woodland trails, gardens, and a "pick your own" orchard.

Directions from Montgomery Place to Tousey Winery

8.5 mi, 15 minutes

1. Head Southwest on Davis Way toward Gardener Way
2. Turn left onto Gardener Way
3. Turn left onto River Rd
4. Take the 1st right to stay on River Rd
5. River Rd turns slightly right and becomes Kelly Rd
6. Continue straight onto Whalesback Rd
7. Continue onto Rockefeller Ln
8. Turn left onto U.S. 9N/Old Albany Post Rd
9. Continue to follow U.S. 9 N
10. Tousey Winery will be on the left



4:30 pm

Visitors will enjoy tasting Tousey's awarding winning and unique wine as well as other on the estate goods such as honey.

Tousey Winery

<http://www.touseywinery.com/>

1774 Route 9

Germantown, NY 12526

Phone: (518) 567-5462

- ✦ **Hours:** The Tasting Room is open Friday 12pm-7pm, Saturday 12pm-5pm, and Sunday 12pm-5pm.
- ✦ **Note:** If you would like to order wine, please complete the form below, including which wine you require and the amount. Tousey Winery will contact you within 24 hours of receiving your information.
- ✦ **Historical Description:** “Our winery began as a family-run enterprise (and still is today). With Ray Tousey’s dream of turning beautiful family-owned grounds into a vineyard, the journey began. Tousey is now run by Ben and Kimberly Peacock – Ray’s daughter, Kimberly, was the natural choice in overseeing the winery along with her husband Ben, whose wine knowledge and business know-how rounds out the team perfectly. With Kimberly having lived in Denmark and Ben hailing from the U.K., we have a unique blend of European sensibility and Hudson Valley roots.”
- ✦ **The Site:** The vineyard is overlooking the Hudson River and the Catskill mountains. In total, there is 15 acres of Chardonnay, Riesling and Pinot Noir under production. They hold private tastings and events throughout the year. The Tasting Room is in the Blue Roof right on Route 9. Here, one can enjoy the wine in a candle lit space. They also sell organic honey, handmade soaps, and local artwork.

Directions from Tousey Winery to the Historic Blue Store Restaurant

1.9 mi, 2 minutes

1. Head northeast on U.S. 9 N toward Buckwheat Rd
2. Turn left onto Co Rte 31/Blue Hill Rd
3. The Historic Blue Store Restaurant will be on the left

6:30 pm

Here visitors will experience delicious comfort food and casual home-style cooking served in a warm, cozy, and charming environment.

(518)-537-6658

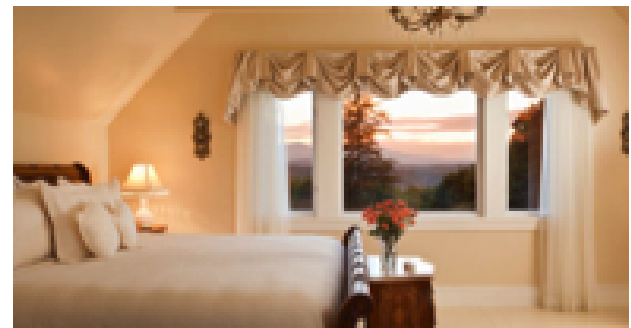
<http://www.bluestorerestaurant.com/>



Directions from the Historic Blue Store Restaurant to Mount Merino Manor: Bed and Breakfast

10.6 mi, 13 minutes

1. Head southeast on Co Rte 31/Blue Hill Rd toward U.S. 9 N
2. Take the 1st left onto U.S. 9 N
3. Slight left onto NY-23 W/State Hwy 23 W/U.S. 9 N
4. Continue to follow NY-23 W/State Hwy 23 W
5. Mount Merino Manor: Bed and Breakfast will be on the right



8:30 pm

Guests will check into the luxury Bed and Breakfast which sits on a lush hilltop, surrounded by 100-acres of shaded woodlands.

Visitors will enjoy the comforts of the Mount Merino Manor and experience magnificent views of the Catskill Mountains and Hudson River.

(518)-828-5583

<http://www.mountmerinomanor.com/>

Day two

Directions from Mount Merino Manor: Bed and Breakfast to Olana

0.8 mi, 1 minute

1. Head west on NY-23 W/Claverack Rd toward New York 9G N/NY-23B E
2. Continue to follow NY-23 W
3. Slight left onto New York 9G S
4. Olana will be on the left

9:00 am

Visitors will be led on a trip through time, touring the remarkably preserved home of Frederic Church.

Visitors will learn the story of Church's life and how he came to build the wonderful mansion overlooking the Hudson River.

Guests will also walk the grounds on an extensive network of old carriage rides viewing the picturesque landscape.



Olana

<http://www.olana.org/>

5720 Route 9-G

Hudson, NY 12534

Phone: (518) 828-0135

- ✦ **Hours:** The house is open by guided tours only; From the first Wednesday in April through Memorial Day, Wednesday-Sunday 10:00-5:00, June 1 through October 1, Wednesday-Sunday 10:00-6:00, October, Wednesday-Sunday 10:00-6:00, and November, Wednesday-Sunday 10:00-4:00. There is a minimal admission fee and special rates are available for school groups.
- ✦ **Notes:** Group tour reservations for 15 people or more are accepted throughout the season.
- ✦ **Historical Description:** Frederic Church, a Hudson River artist, laid out roads, planting thousands of trees, and dredging a marsh to create a reflecting pond. When the Churches were on a journey to the Middle East and Europe, they were captivated by the Moorish architecture, which they felt provided a sense of permanence, rich associations with the past, and splendid decorative potential. Church personally created the interiors and exteriors of Olana. Construction began in 1870 and the family moved into the second floor in late 1872. Isabel Church died in 1899; Frederic the following year. Olana remained in the family until 1964 when plans were made to sell the carefully preserved house at auction. Soon after, Olana Preservation, Inc. was formed by art historian David Huntington. Under his leadership, Olana Preservation purchased the property in 1966. Olana was transferred to the State of New York later that year.
- ✦ **The Site:** On-site and outreach enrichment programs, slides, and lectures are available for school groups, community interest groups, college and university classes and clubs. Programs from the education or curatorial departments give interesting perspectives about Olana, Frederic Church, Victorian America, and the American Art scene in the nineteenth-century.

Directions from Olana, across the RIP Van Winkle Bridge to Cedar Grove

1.8 mi, 3 minutes

1. Head north on New York 9G N/Rhinebeck-Hudson Rd
2. Continue to follow New York 9G N
3. Turn left onto NY-23 W/Rhinebeck-Hudson Rd/Rip Van Winkle Bridge
4. Continue to follow NY-23 W
5. Turn left onto Spring St
6. Cedar Grove will be on the left



11:30 am

Visitors will participate in a guided tour of Thomas Cole's home and studio.

Then see the film about Cole's art.

Next guests will take a stroll through the flower gardens and enjoy the sweeping view of the Catskill Mountains.

Finally, visitors will listen to a special lecture about the Hudson River School.

Cedar Grove: The Thomas Cole National Historic site

<http://www.thomascole.org/>

218 Spring Street

PO Box 426

Catskill, NY 12414

Phone: (518) 943-7465

Fax: (518) 943-0652

- ✦ **Hours:** The Main House and Studio are open by guided tour. From the first Saturday in May through the last Sunday in October, tours are offered Friday, Saturday and Sunday 10:00am-4:00pm. The house is open Memorial Day, Labor Day, Columbus Day, and Independence Day 1:00pm-4:00pm. Tours are offered at other times by appointment.
- ✦ **Note:** Tours of the Main House begin approximately every hour on a first-come-first-served basis. Tours last about 40 minutes, and each tour is limited to approximately 12 people. Group tours are welcome 7 days a week by advance appointment calling.
- ✦ **Admission:** \$7 and \$5 for seniors and students.
- ✦ **Historical Description:** "From the first, Cedar Grove and the Catskill Mountain region nurtured Thomas Cole's artistry. In his "Essay on American Scenery" (1835), Cole said the local landscape had "varied, undulating, and exceedingly beautiful outlines – [the Catskills] heave from the valley of the Hudson like the subsiding billows of the ocean after a storm." In this setting, in his "painting room" at Cedar Grove, Thomas Cole created many of the Hudson River School masterpieces that assured his fame."
- ✦ **The Site:** In the late 1980s, the National Park Service recognized the significance of Thomas Cole and his life at Catskill, status formalized in 1999 when Cedar Grove was declared a National Historic Site. But in the 1980s and 90s funds to acquire the site were not forthcoming until the Greene County Historical Society purchased the property in 1998. Restoration of the main house followed and in 2001, Thomas Cole's 200th birthday, Cedar Grove opened to the public."

Directions from Cedar Grove to Catskill Point Restaurant

1.5 mi, 5 minutes

1. Head south on Spring St toward Sunset St
2. Turn right onto Bridge St
3. Take the 3rd left onto Main St
4. Catskill Point Restaurant will be on the right

1:00 pm

Visitors will enjoy lunch at the Catskill Point Restaurant with available outdoor seating. The Catskill Point has a casual setting and is well known for its seafood.

(518) 943-5088



Directions from Catskill Point Restaurant to Bailiwick Ranch & Discovery Zoo

11.5 mi, 23 minutes

1. Head west on Main St toward Dutchman's landing
2. Turn left onto Bridge St
3. Continue onto NY-23A W
4. Turn right onto Hwy 32 N/NY-32 N/Rt 32 N/State 32 N/State Hwy 32 N/State Rte 32 N
5. Turn left onto Game Farm Rd
6. Turn left onto Castle Rd
7. Turn right to stay on Castle Rd
8. Bailiwick Ranch & Discovery Zoo will be on the right

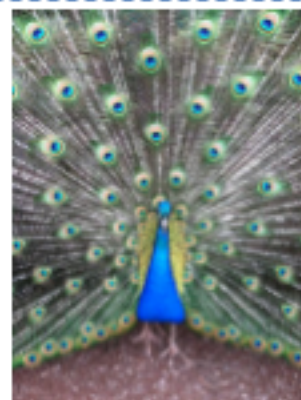
2:30 pm

Visitors will walk through the park and view all the exotic animals.

Guest will also visit the petting and feeding areas.

There is a playground and bounce house for children

Finally guests will chose from a horseback riding, trail rides, paintball, and pony rides



Bailwick Ranch and Discovery Zoo

<http://www.bailiwickranch.com>

118 Castle Road

Catskill, NY 12414

Phone: (518) 678-5665

- ✦ **Hours:** Ranch hours: Monday-Sunday 10:00am-6:00pm. Zoo Hours: March 23rd -- October 1st 10:00am to 6:00pm.....Open Daily (Weather Permitting) October 2nd-November 30th 10:00am to 4:00pm..... Weekdays & till 5pm on weekends closed November through March. Some animal exhibits subject to change with weather conditions. Catskill Equestrian Center (located at the Bailiwick Ranch) Monday through Friday 10:00am-5:00pm.
- ✦ **Note:** Trail rides are available for everyone 7 and older. Reservations are not required for the 1/2 hour, 1 hour, 1 1/2 hour or 2 hour rides. They also offer half day, all day, and overnight rides by reservation only. Pony rides are also available for kids 6 and under. For the zoo part, you can call you book a birthday party or any other kind of party!
- ✦ **Admission:** Trail Rides: 1/2 hour trail ride: \$45 per person. 1 hour trail ride: \$55 per person. 1 1/2 hour trail ride: \$85 per person. 2 hour trail ride: \$95 per person. 1/2 day trail ride: \$165 per person. All day trail tide: \$245 per person. Zoo: Adults \$14.00.....Seasons Pass \$45.00. Kids 13 & under \$10.00.....Seasons Pass \$35.00 Under 3...Free. Free Admission with Military ID. Call for Group Admission. Paintball: \$45 per person. Equestrian Center: \$350 a week.
- ✦ **The Site:** Visit the Discovery Zoo and meet our exotic and farm animal friends! A walk through park with petting and feeding areas, and a playground, complete with a bounce house! You will find a wide variety of exotic and farm animals. The farm animals range from goats, sheep, pigs, calves, rabbits and chickens. Our exotic animals include red kangaroos, ring tail lemurs, chimpanzees, an American black bear, a reptile house, camels and a bengal tiger. Many of the animals friends have been rescued or adopted and bottle-raised at our facility. Guided scenic trail rides are available for everyone 7 and older, no experience necessary and astm/sei approved riding helmets are supplied. Reservations are not required for the 1/2 hour, 1 hour or 2 hour rides. We also offer half day, all day, overnight and sunset rides by reservation only. Pony rides are also available for kids 7 and under.



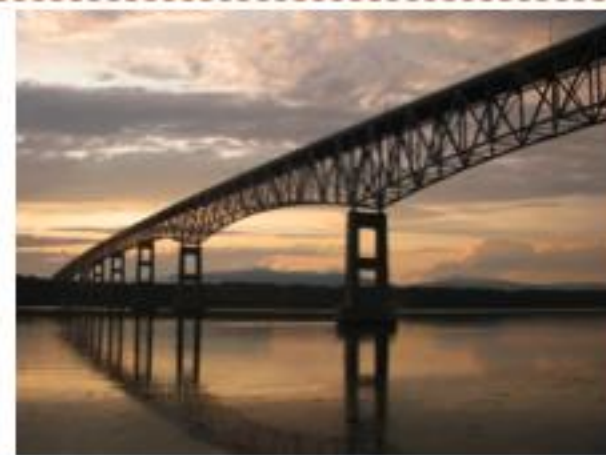
Directions from Bailiwick Ranch & Discovery Zoo back to the George Clinton Memorial Bridge

24.1 mi, 37 minutes

1. Head north on Castle Rd toward Castle Rd Exn
2. Take the 2nd left to stay on castle Rd
3. Turn right onto Game Farm Rd
4. Turn right onto Hwy 32 S/NY-32 S/Rte 32 S/ State 32 S/ State Hwy 32 S/State Rte 32 S
5. Turn left onto Hwy 32 S/Ny-212 E/NY-32 S/Rte 32 S/ State 32 S/State Hwy 32 S/State Rte 32 S
6. Turn right onto Kings Hwy
7. Turn left onto Co Rd 32/Glasco Turnpike
8. Turn right onto US-9W S
9. Take the ramp to NY-199/Rhinecliff Br
10. Merge onto US-209 N
11. Continue onto NY-199 E/Frank Sottile Blvd
12. Continue to follow NY-199 E

5:00 pm

Travelers will now head home.



Conclusion



✦ Our sector has many attractions that appeal to all different age groups. The history, art, and landscape are unforgettable. Visiting this sector will provide individuals with insight on the impact the Hudson River had on DU CG culture.

Bibliography

- "Bailiwick Ranch and Discovery Zoo - My Farm Profile." *Bailiwick Ranch and Discovery Zoo - My Farm Profile*. N.p., n.d. Web. 08 Dec. 2013.
- *Bailiwick Ranch & Discovery Zoo*. N.p.. Web. 7 Oct 2013.
<<http://www.bailiwickranch.com>>.
- "Cedar Grove | The Thomas Cole National Historic Site - School Programs." *Cedar Grove | The Thomas Cole National Historic Site - School Programs*. N.p., n.d. Web. 08 Dec. 2013.
- Collier , Edward . "Native Americans of Columbia County ." Kinderhook and its Indians .
www.usgennet.org/usa/ny/county/columbia/natives/index_natives.htm
(accessed October 15, 2013).
- "Kingston-Rhinecliff Bridge (NY 199)." New York Area Roads, Crossings and Exits. <http://www.nycroads.com/crossings/kingston-rhinecliff/>
(accessed October 15, 2013).
- "Montgomery Place ." *Historic Hudson Valley*. N.p.. Web. 7 Oct 2013.
<<http://www.hudsonvalley.org/historic-sites/montgomery-place>>.
- "Montgomery Place - Rhinebeck, NY - Early 19th Century Estate." *Montgomery Place - Rhinebeck, NY - Early 19th Century Estate*. N.p., n.d. Web. 08 Dec. 2013.

Bibliography

- "Montgomery Place." *Visiting in Annandale-on-Hudson, N.Y.* N.p., n.d. Web. 08 Dec. 2013.
- "News Blog." *Tousey Winery RSS 092*. N.p., n.d. Web. 08 Dec. 2013.
- "Poets' Walk." *Scenic Hudson*. N.p.. Web. 7 Oct 2013.
<<http://www.scenichudson.org/parks/poetswalk>>.
- "PROGRAM CALENDAR | Olana: The 250-acre Integrated Environment of Famed Hudson River School Painter Frederic Edwin Church: Art, Architecture, Landscape, Farm and Views." *PROGRAM CALENDAR | Olana: The 250-acre Integrated Environment of Famed Hudson River School Painter Frederic Edwin Church: Art, Architecture, Landscape, Farm and Views*. N.p., n.d. Web. 08 Dec. 2013.
- "Olana State Historic Site." *New York State Office of Parks, Recreation, and Historic Preservation*. N.p.. Web. 7 Oct 2013. <[http://nysparks.com/historic-sites/23/details.asp&xgt](http://nysparks.com/historic-sites/23/details.asp&xgt;);.
- "Our Story." *Tousey Winery*. N.p.. Web. 7 Oct 2013.
<<http://www.touseywinery.com/our-story/>>.
- "Overview." *Thomas Cole National Historic Site*. N.p.. Web. 7 Oct 2013.
<http://www.thomascole.org>.

Bibliography

- "Rip Van Winkle Bridge (NY 23)." New York Area Roads, Crossings and Exits. <http://www.nycroads.com/crossings/rip-van-winkle/> (accessed October 15, 2013).
- Rockwell, Rev. Charles. "Chapter 3 - Ulster County - The Catskills And The Region Around (1867)." Welcome to the Catskill Archive. <http://www.catskillarchive.com/rockwell/3.htm> (accessed October 15, 2013).
- "School Tours." *MPO* :: N.p., n.d. Web. 08 Dec. 2013.
- "The History of Greene County, NY ." Greene County, NY . greengovernment.com/about-greene/history/ (accessed October 15, 2013).