



“Happiest Place on Earth”

Sullivan County

By: Asher Zink, Ashley Fricchione,
Nicole Couto, Mike Wood and
Shannon Conway



Thesis



“Happiest Place on Earth”

Sullivan County is a wonderful place to live and visit because it has many appealing recreational sites such as: Monticello Raceway, Lake Superior State Park, Holiday Mountain Ski and Fun Park, Bethel Woods, Kittany Canoes and Zip Lining.

Table of Contents



“Happiest Place on Earth”

- Logo (Mike Wood)
- Thesis (Shannon Conway and Nicole Couto)
- Midterm Review Slides (Ashely Fricchione, Nicole Couto, and Shannon Conway)
- Itinerary and Guidebook (Group)
- Interpretive Panels (Mike Wood)
- Highway route markers (Asher Zink)
- Lesson Plans (Shannon Conway, Ashley Fricchione, and Asher Zink)
- Conclusion (Mike Wood and Asher Zink)



Logo



“The Happiest Place on Earth”

History

- Turned to tourism, became their main industry & began building hotels in the 1840s “Happiest Place on Earth”
- Different railroads going into the county were completed in 1830, 1871, and 1872
- In 1895 and 1897, lawn tennis and golf were available at hotels
- By 1953, there were many different sources of recreation
- First Woodstock Music Festival at Bethel Woods Center for the Arts in 1969





County Tourism Development:



“Happiest Place on Earth”

- Each site has a Facebook and Twitter page that allows people to follow and keep up with new and upcoming events
- Main page websites: helps people look up directions, times, and book reservations.
- The pictures on all of these sites helps attract new people and encourages people to check out these places.
- Click on the following attractions to visit their main page:



1. Monticello Raceway
2. Lake Superior State Park
3. Holiday Mountain Ski and Fun Park

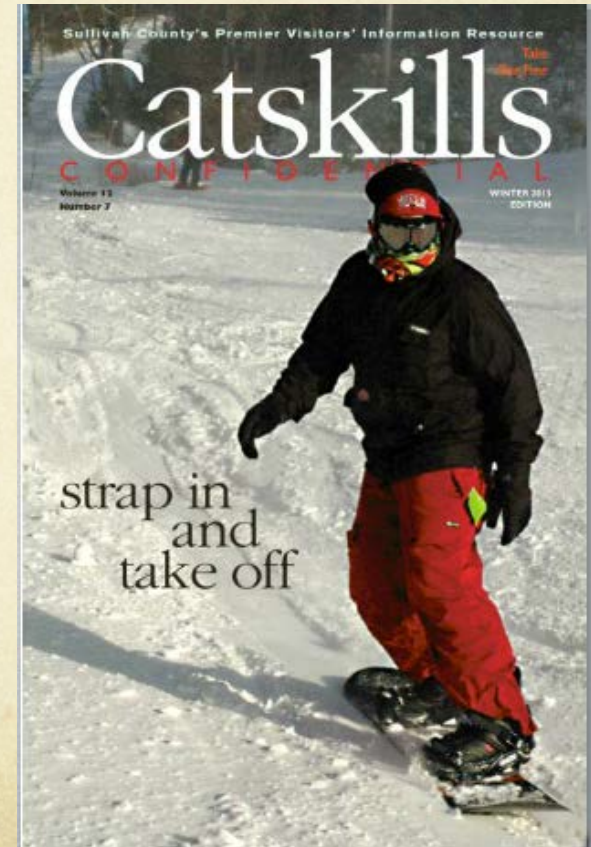
4. Bethel Woods
5. Kittatiny Canoes and Zip Line

How can the sites further develop their tourism strategies?

- The county Twitter page needs more updating
- More ads in newspapers and magazines
- They have guidebooks to attract tourists to different sites in the county →
- Create an Instagram that is updated



“Happiest Place on Earth”





Facts and Guidebook



“Happiest Place on Earth”

- Over 1,000 slot machines!
- Exciting live Harness Racing
- Bands or DJ's every Friday and Saturday night
- Different shows and promotions every week
- Food court, restaurants and a buffet

Monticello Raceway and Casino Guidebook

204 State Route 17B

Monticello, New York 12701

Hours: Monday – Thursday, 10:00am – 2:00am, Friday – Sunday, 10:00am – 4:00am.

Phone: (845) 794-4100

The Site:

Monticello Casino & Raceway offers exciting casino action, horseracing and much more! Experience the thrill of our gaming floor, situated on one fun level, as well as one of the only harness-raced tracks in all of America. Their casino and entertainment complex is approximately 40,000 square feet, featuring live entertainment and various places to enjoy a nice meal. There is an all you can eat buffet, large food court or our Bistro menu at The Terrace and for a quick snack, try the Food Court specializing in pastries, pizza, ice cream and NY deli delights. While you can go right outside and watch harness horse racing live, you can also enjoy simulcast from other racing across the country.

Directions:

Located just 90 minutes from New York City, Monticello Casino and Raceway is off Exit 104, off Route 17 (Future Interstate 86) on New York State Route 17B.

From I-84, Fishkill:

1. Head east on NY-52 Business/Main St toward Heath Rd
2. Turn left to merge onto I-84
3. Take exit 4W to merge onto NY-17 W toward Binghamton
4. Take exit 104 for New York 17B toward Monticello/Raceway
5. Turn left onto NY-17B W/State Route 17B W/Rt 17B W/State Rt 17B W/St Rt 17B W
6. Turn right onto Stable Rd
7. Continue straight onto Monticello Raceway
8. Slight left to stay on Monticello Raceway
9. Turn right to stay on Monticello Raceway
10. Take the 1st left to stay on Monticello Raceway

Destination will be on the right

It is off Exit 104 of Route 17 (future Interstate 86), on New York State Route 17B.



Itinerary- Monticello Raceway



County of Sullivan

“Happiest Place on Earth”

Monticello Raceway and Casino

Stop 1

Old Homestead Restaurant

472 Bridgeville Road, Monticello, NY 12701


845.794.8973


Open Wed-Sat at 4:30p, Sunday at 4:00p


Closed Mon and Tues



This is a very serious steak and seafood house. Delicious steaks, vegetables (fresh steamed broccoli), salads, fresh baked breads and the most outstanding lobster! It's set aside a beautiful creek hidden in the mountains off of RT 17. The setting is a very old farm home, and the menu is very simple. It's read out loud by the server (that's how small it is) and every item is prepared to order. The view is breathtaking from the dining room, especially in the fall when the leaves change colors.

 2. Keep right to take I-87 N/New York State Thruway N toward Harriman (Portions toll). 0.5 mi

 3. Merge onto RT-17 W via EXIT 16 toward Harriman (Portions toll). 40.7 mi

 4. Take EXIT 107 toward Bridgeville. 0.3 mi

 5. Turn left onto Heiden Rd. 0.3 mi

 6. Turn left onto Bridgeville Rd. 0.8 mi
If you reach the end of Kroeger Rd you've gone about 0.1 miles too far

 7. 472 BRIDGEVILLE RD is on the right.
*Your destination is 0.1 miles past Holiday Mt Rd
If you reach Holiday Mountain Trl you've gone about 0.2 miles too far*

Stop 2

The Petting Zoo at Breezeway Farm

161 Anawana Lake Road

Monticello, New York 12701

(845)-794-4543

Open Daily: 10am - 6pm


\$8.00 per person, Pony Rides with admission \$4.00,
Pony rides \$5.00, Animal Food \$1.00


Groups of 20 or more by appointment only



The Petting Zoo at Breezeway Farm has many animals for children and adults alike to enjoy. Green grass, tall trees and a large pond surround it the petting zoo. They have calves, chickens, cows, donkeys, ducks, geese, goats, horses, pigs, sheep, bunny rabbits, turkeys, llama and a miniature pony and baby. They also have pony rides for children to enjoy!

 1. Start out going east on I-84 E. 2.8 mi

 2. Merge onto RT-17 W via EXIT 4W toward Binghamton. 25.6 mi

 3. Take the RT-42 N exit, EXIT 105B, toward Kiamasha. 0.4 mi

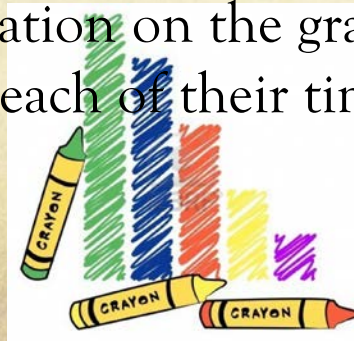
 4. Turn right onto RT-42. 0.1 mi

 5. Turn left onto Anawana Lake Rd. 0.8 mi
*Burger King is on the corner
If you reach Thompson Sq you've gone a little too far*

 6. 161 ANAWANA LAKE RD is on the left.
*Your destination is 0.1 miles past Calandra Ln
If you reach Robert Rd you've gone about 0.4 miles too far*



- Overview: During this lesson students in the second grade will learn how to make bar graphs using data they collect during the race at Monticello Raceway.
- Procedure: They will attend the field trip at the Monticello Raceway and the teacher will assign them each a partner and a horse to keep track of during the race. They will use their stopwatches to record each lap their horse takes (approximately 2-3 laps depending on the type of race). After the field trip, the students will get back to the classroom and each child will create a bar graph with their partner of the different times they recorded for their horse. Each time will receive a different bar representation on the graph. Then they will all get together and compare each of their times.



Monticello Raceway and Casino



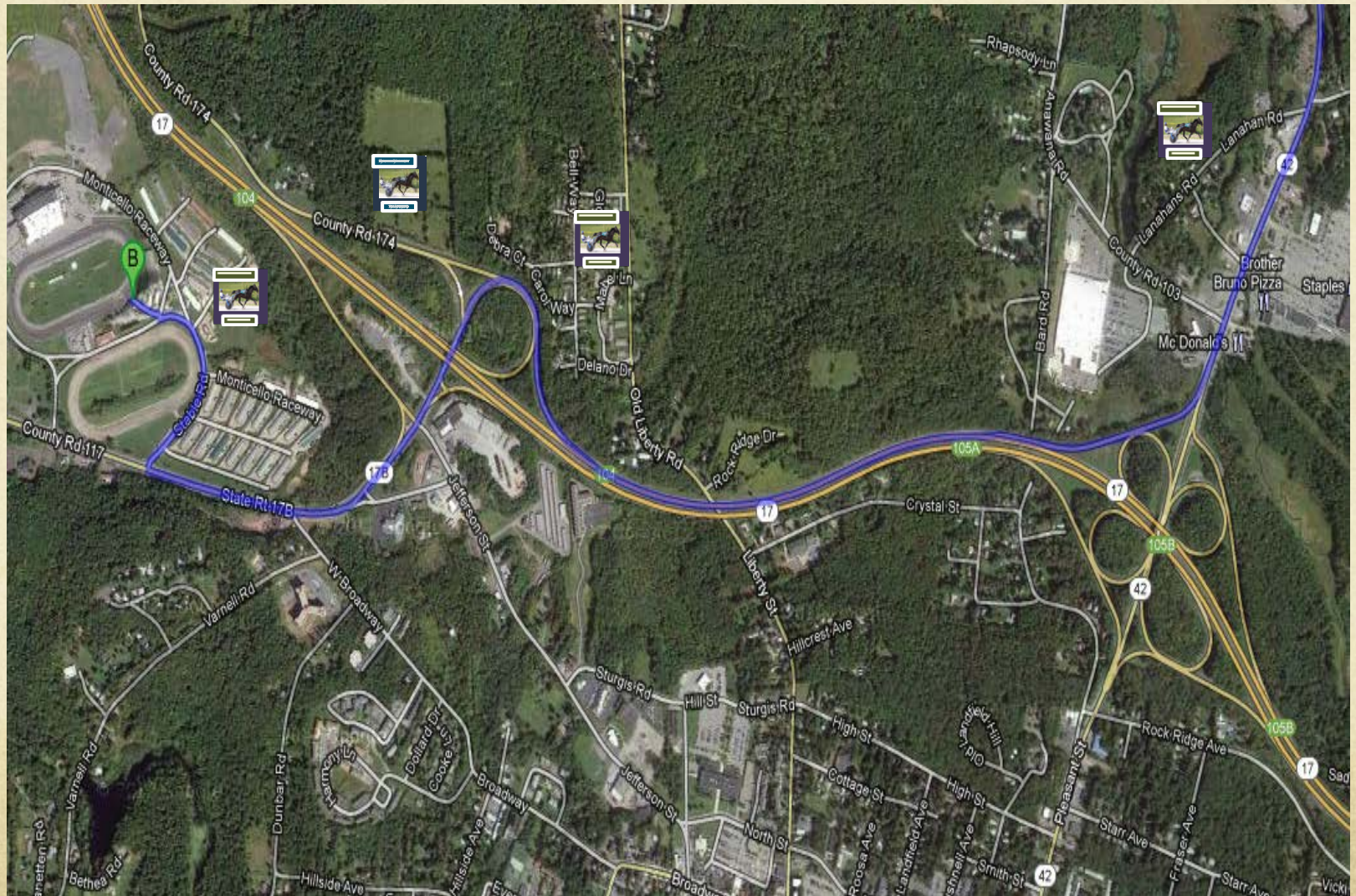
“Happiest Place on Earth”

MONTICELLO
RACEWAY



FOLLOW SIGNS

Highway Route Markers



Interpretive Sign

Monticello Casino & Raceway

Real Fun, Real Close

“The Happiest Place on Earth”



Monticello Casino & Raceway offers exciting casino action, and much, much more. Our 40,000 square foot casino and entertainment complex boasts the Lava Lounge and HYPE! featuring live entertainment.

Monticello Casino & Raceway features over 1,000 of the newest, hottest slot machines, including progressives and video poker. From penny games up to \$100 high limit action, we've got the name of your game!

You can also enjoy live horse racing and simulcast from across the country.



MONTICELLO RACEWAY



Lake Superior State Park Facts and Guidebook

- Great way to spend a day with family and friends
- The park offers beaches, boat launches, picnic areas area fishing
- Also, rowboat and paddle boat rentals, a volleyball court and playground
- Big game hunting (DEC hunting permit required), ice fishing, hiking and sleigh riding.



“Happiest Place on Earth”

Lake Superior State Park Guidebook

HUDSON HIGHLANDS

Lake Superior State Park

<http://nysparks.com/parks/87/details.aspx>

Dr. Duggan Road

Bethel, NY 12720

Hours: Open year round. Open for deer and turkey hunting seasons. Open from May 23 - September – 9am to dusk.

Phone: (845) 794-3000 ext 5002

The Site:

Lake Superior State Park is made up of 1409 acres including Lake Superior and Chestnut Ridge Pond. Sullivan County operates two areas of the park: Lake Superior's beach area and Lake Superior's dam picnic area. The beach area has a sand beach, swimming area, picnic areas with grills, a group picnic pavilion, rowboat and paddle boat rentals, a boat launch, vending machines, restrooms, shower/changing area, volleyball court, fishing, and a playground. The picnic area has picnic tables and grills, a group picnic pavilion, fishing access to Lake Superior, and portable toilet facilities.

Directions:

Accessible from Route 55, from North: follow Route 55, turn right onto St Rt 17B, then left onto Dr Duggan Rd. From South: follow Route 55, turn left onto Dr Duggan Rd. Lake Superior State Park is located on Dr Duggan Road in Bethel, NY. Please call for more specific directions: (845) 794-3000 ext 5002.



Itinerary- Lake Superior State Park



“Happiest Place on Earth”

Lake Superior State Park

Stop 2

The Museum at Bethel Woods

Bethel Woods Center for the Arts
200 ~~Uud~~ Road
Bethel, NY 12720
(866)-781-2922

<http://www.bethelwoodscenter.org/museum.aspx>

The Museum at Bethel Woods is an immersive and captivating multi-media experience that combines film and interactive displays, text panels and artifacts to tell the story of the Sixties and Woodstock. It explores the unique experience of the Woodstock festival, its significance as a culminating event of a decade of radical cultural transformation, and the legacy of the Sixties and Woodstock today.

(<http://www.bethelwoodscenter.org/museum/about.aspx>)

Directions: Accessible by Route 55 and Route 17B. From Northern New York: follow Route 55. Turn right onto Route 17B/Route 55 and continue to follow Route 17B. Turn right onto ~~Uud~~ Road.



Stop 1

Euro Super Deli

Euro Super Deli
36 ~~Forestburgh~~ Road
Monticello, NY 12701
(845)-707-4964

<http://www.eurosuperbistro.com/>

This deli is open for breakfast, brunch, lunch, and dinner. Visiting this deli will give you a little taste of Europe. They have the best ~~piezeries~~ and chicken cutlets around. They have great food, service, and prices. Some other items on their menu include: stuffed cabbage, potato pancakes, and polish kielbasa. This deli caters and delivers as well.

Directions: Accessible by Route 17M. From Southern New York: merge onto Rt 17W toward Bloomingburg. Merge onto Rt 42. At Pleasant St exit Exit 105A toward Monticello. Turn right onto Broadway/Rt-42. Turn left onto ~~Forestburgh~~ Rd/Rt-42.



Lake Superior State Park Lesson

3rd Grade Class

- **Overview:** Students will take a field trip to Lake Superior State Park. Prior to the field trip, students will be knowledgeable on the seasonal changes that occur in their environment. Students will receive a list of pictures describing the types of leaves they will find while walking through the property. Students will classify and categorize the types of leaves they find. After the students have found most of the leaves on the list, they will be required to trace the leaves on a provided worksheet. The students will have to write a short description stating what tree the leaf come from and the characteristics of the leaf.
- **Procedure:** The class before our field trip, students will learn about the seasonal changes that occur. The students will receive a list of leaves they can find and a bag to place the leaves in. The students will find the required leaves, and then trace them onto their worksheet. The students will then write a short summary about each leaf, and then make a book out of the worksheets.



Lake Superior State Park

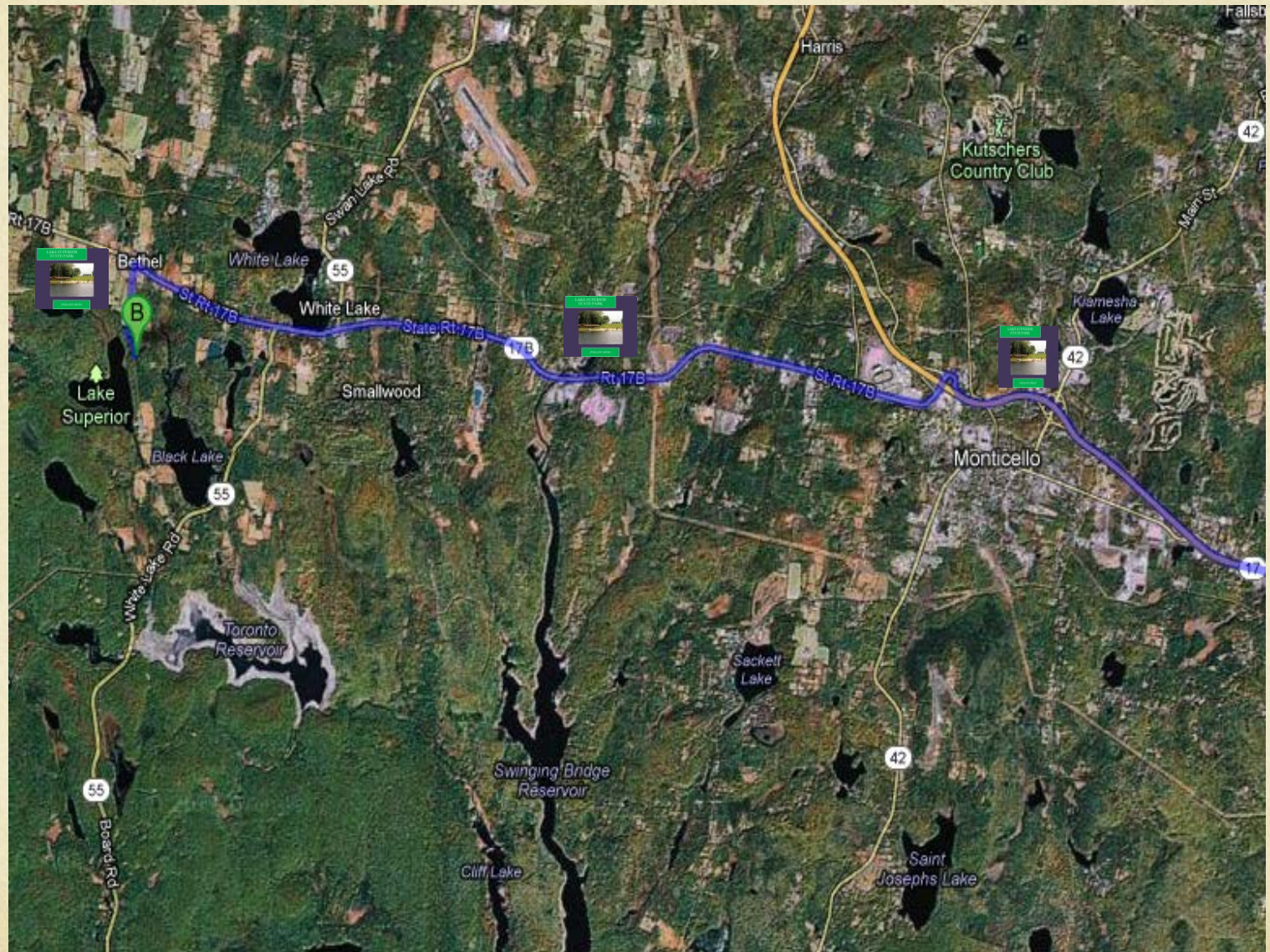


“Happiest Place on Earth”

LAKE SUPERIOR
STATE PARK



FOLLOW SIGNS



Interpretive Sign

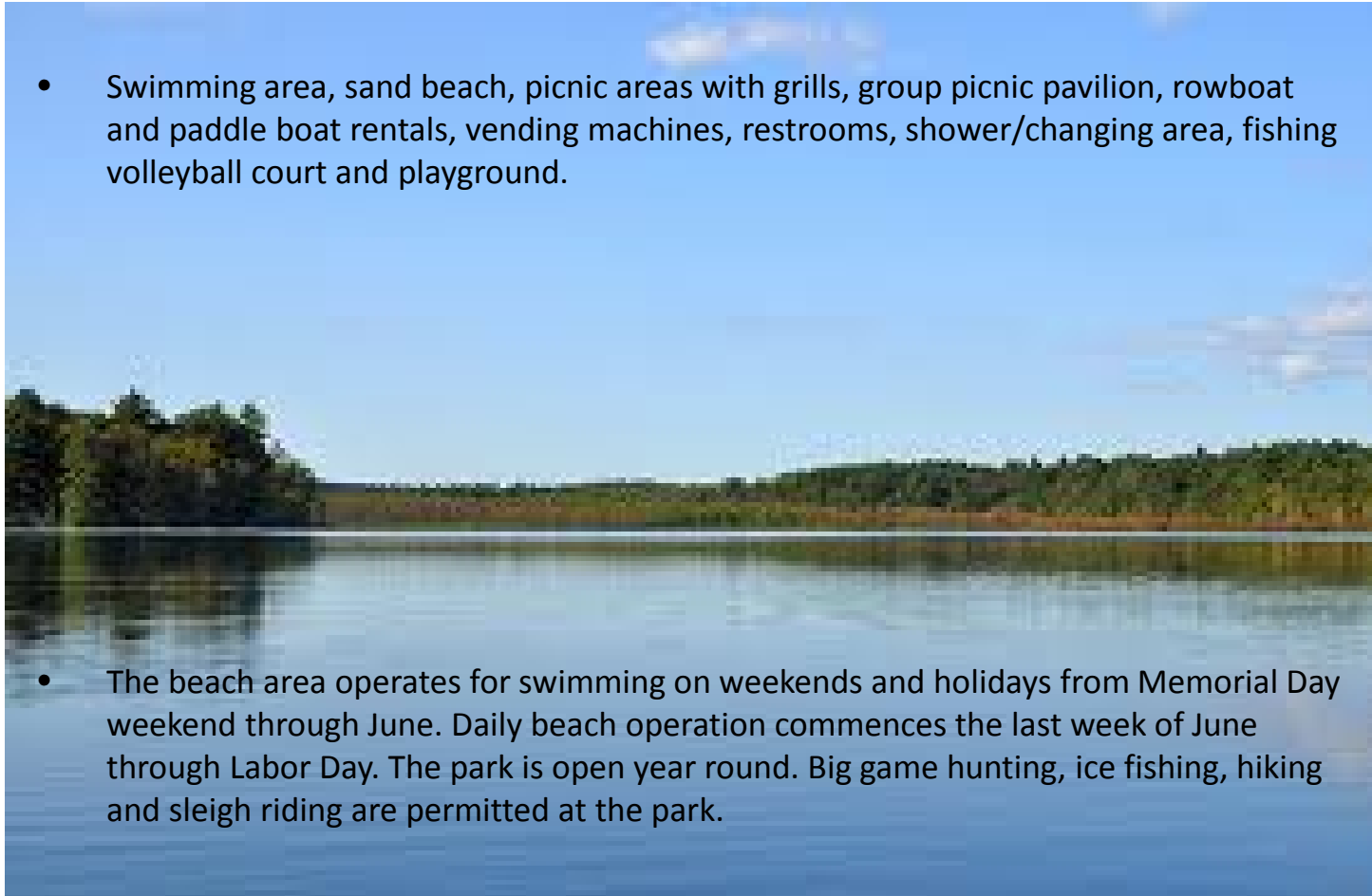
Lake Superior State Park



“The Happiest Place on Earth”

- Swimming area, sand beach, picnic areas with grills, group picnic pavilion, rowboat and paddle boat rentals, vending machines, restrooms, shower/changing area, fishing volleyball court and playground.

- The beach area operates for swimming on weekends and holidays from Memorial Day weekend through June. Daily beach operation commences the last week of June through Labor Day. The park is open year round. Big game hunting, ice fishing, hiking and sleigh riding are permitted at the park.





Facts and Guidebook

- Winter season activities: skiing, snowboarding and snow tubing
- Summer season activities: go-karts, bumper boats, bumper cars, mini golf, wall climbing, batting cages, and paintball shooting.
- Also hosts corporate events, family reunions, and fundraising events

Holiday Mountain

SKI AND FUN PARK



"The Happiest Place on Earth"

Holiday Mountain Ski and Fun Park Guidebook

99 Holiday Mountain Rd Monticello, NY 12701
(845) 796-3161

Site:

Holiday Mountain Ski & Fun Park is a unique attraction in Sullivan County that not only offers Skiing, but a Fun Park with many attractions and amenities as well. The great thing about this attraction is the variety of different activities children, and even parents can participate in while visiting. Holiday Mountain Ski and Fun Park provides in winter, skiing, snowboarding, snow tubing, ice skating, a ski & snowboard club and even ski & snowboarding lessons. In the summer, go-karts, bumper boats, bumper cars, rock wall, mini-golf, potato sack slide, arcade, Choo Choo Charlie, mechanical bull and batting cages are available for children, fulfilling every one of their active needs.

From I-84, Fishkill

1. Head east on NY-52 Business/Main St toward Heath Rd
2. Turn left to merge onto I-84
3. Take exit 4W to merge onto NY-17 W toward Binghamton
4. Take exit 109 toward Rock Hill/Woodridge
5. Turn right onto Rock Hill Dr
6. Take the 1st right onto Katrina Falls Rd
7. Turn right onto Holiday Mountain Trail
8. Take the 1st left onto Co Rd 173/Old Route 17/Bridgeville Rd
9. Turn left onto Holiday Mountain Rd

Destination will be on the left

99 Holiday Mountain Rd, Monticello, NY 12701

Itinerary- Holiday Mountain Ski and Fun Park



County of Sullivan

"The Happiest Place on Earth"

Holiday Mountain Ski and Fun Park



Stop 1 Eisenhower Hall Theatre at West Point

655 Pitcher Road
West Point, NY, 10996
United States
(845)-938-4159

Monday through Friday's 8:00am - 4:00 pm,
except holidays.

Pricing Varies

Free parking at all times

Popular Broadway shows. Comedy, Classic musical icons, and more! You can even buy a package of 11 shows, which includes fantastic entertainment at prices you'll value. Whether you come for one show or for all, you will be able to enjoy the unique location and all that they have to offer.

The theatre is newly renovated, with seating, carpeting, lighting, and sound systems all receiving upgrades. Parking is always free. Enjoy dining at Mamie's Buffet overlooking the Hudson. Come early, and spend the day at West Point!

1. Merge onto I-84 W / RT-52 W via the ramp on the left toward Newburgh. [Map](#) 2.5 Mi
If you reach Dogwood Ln you've gone a little too far 3.5 Mi Total
2. Take the RT-32 S exit, EXIT 105, toward US-9W / Newburgh / West Pt. [Map](#) 0.2 Mi
3.7 Mi Total
3. Turn slight right onto N Plank Rd / RT-32. [Map](#) 0.2 Mi
3.9 Mi Total
4. Turn right onto US-9W / RT-32. Continue to follow US-9W S. [Map](#) 12.5 Mi
Alexis Diner Restaurant is on the corner 15.4 Mi Total
5. Merge onto RT-218. [Map](#) 1.4 Mi
17.8 Mi Total
6. Turn slight right onto Washington Rd (Gate access required). [Map](#) 1.0 Mi
18.8 Mi Total
7. Turn slight left onto Ruger Rd. [Map](#) 0.3 Mi
19.0 Mi Total
8. Turn left. [Map](#) 0.01 Mi
If you reach Howard Rd you've gone about 0.1 miles too far 19.0 Mi Total
9. Turn right onto Pitcher Rd. [Map](#) 0.1 Mi
19.2 Mi Total
10. [600-699] PITCHER RD. [Map](#) 0.1 Mi
If you reach Ruger Rd you've gone about 0.5 miles too far
11. [600-699] Pitcher Rd, West Point, NY 10996

Stop 2

Piccolo Paese

2071 State Route 52
Liberty, NY 12754
(845) 292-7210

Open Tuesday-Thursday, and Sunday 12pm-10pm and Friday-
Saturday 4pm-10pm and Closed on Mondays

<http://piccolopaeserestaurant.com/>



They are located in the heart of the beautiful Catskill Mountains in Upstate New York. Dining at Piccolo is like appreciating the fine cuisines and professional services of a quality Manhattan restaurant, while appreciating the casual and friendly ambience of our "Little Village Restaurant".

They produce many types of fresh homemade Ravioli daily. You can also enjoy table side specialties such as homemade Caesar salad, along with desserts such as strawberries flambé, banana fosters and zabaglione. They also have an international wine list and spacious bar area, where you can enjoy a cocktail from their fabulous martini list. The bar room is also an excellent environment to appreciate a casual meal with friends or business associates.

1. Merge onto I-84 E toward Newburgh. [Map](#) 4.0 Mi
4.0 Mi Total
2. Merge onto RT-17 W via EXIT 4W toward Binghamton. [Map](#) 36.1 Mi
40.1 Mi Total
3. Take EXIT 100 toward RT-52 / Liberty. [Map](#) 0.2 Mi
40.4 Mi Total
4. Turn left onto Sullivan Ave. [Map](#) 0.1 Mi
Sears is on the corner 40.5 Mi Total
5. Take the 1st left onto RT-52. [Map](#) 0.07 Mi
If you are on Grossinger Rd and reach Muss Ln you've gone a little too far 40.6 Mi Total
6. 2071 STATE ROUTE 52. [Map](#) 0.1 Mi
If you reach Triangle Rd you've gone a little too far
7. 2071 State Route 52, Liberty, NY 12754-2235

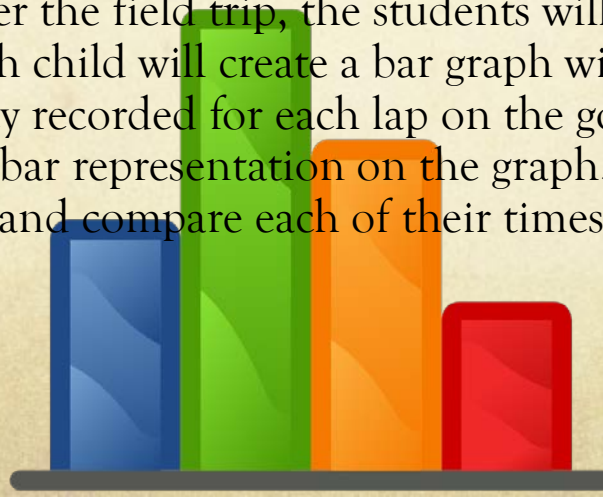


Lesson

2nd Grade Class



- **Overview:** During this lesson students in the second grade will learn how to make bar graphs using data they collect during the race at the Holiday Mountain Ski and Fun Park.
- **Procedure:** They will attend the field trip at the Holiday Mountain Ski and Fun Park and the teacher will assign them each a partner. Each student from each group will go around the go-cart raceway track as many times as they are given per session. Their partner will record on a stopwatch how long it takes them to get around the track for each lap. They will be given a worksheet with a table on it for them to record each of their times. After the field trip, the students will get back to the classroom and each child will create a bar graph with their partner of the different times they recorded for each lap on the go-carts. Each time will receive a different bar representation on the graph. Then they will all get together as a class and compare each of their times.



Ski and Fun Park

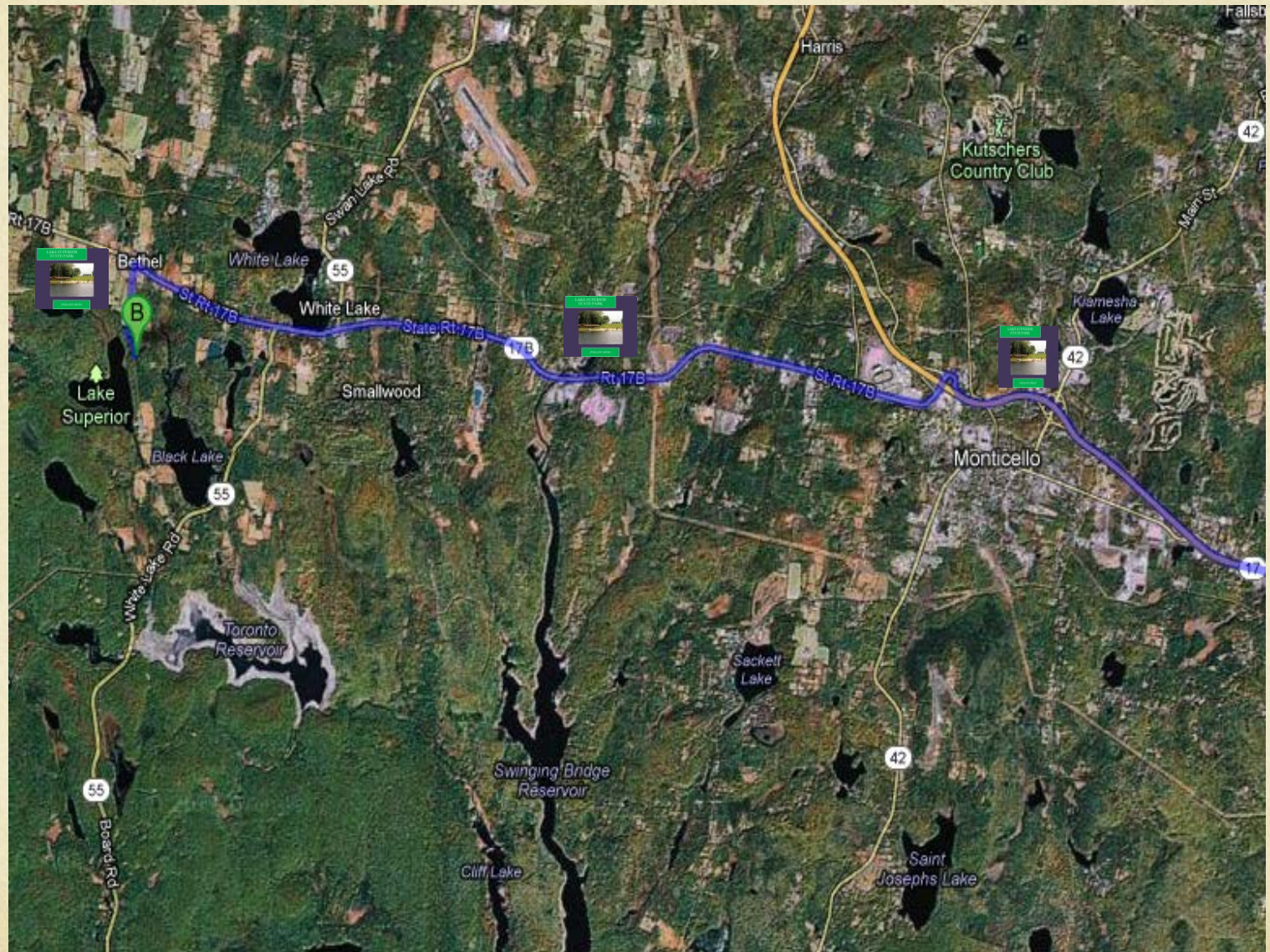


“Happiest Place on Earth”

HOLIDAY MOUNTAIN
SKI AND FUN PARK



FOLLOW SIGNS



Interpretive Sign



Holiday Mountain Ski & Fun Park

"The Happiest Place on Earth"

- Holiday Mountain is a ski hill where parents bring their kids to learn, and in turn, they visit with their own children – or grand children!
- 7 trails, varying in skill levels, so you'll never feel like you're under or overwhelmed.
- Summer Holiday operates a fun park with plenty of activities for the whole family.
- Get wet and have fun!





“The Happiest Place on Earth”

- A world-class cultural center
- Live music with your favorite bands and performances
- Multiple stages
- Featuring a diverse selection of popular artists and culturally-rich performances
- Award-winning museum, and educational and community programs that provide meaningful experience in arts, history and civic engagement.

Bethel Woods Center for the Arts Guidebook

<http://www.bethelwoodscenter.org/home.aspx>

200 Hurd Road

Bethel, NY 12720

Hours: Museum hours in the spring are Thursday-Sunday, 10AM-5PM through May 24th. Museum hours in the summer are every day, 10AM-7PM, through September 2nd. Visit website or call for information on upcoming concerts.

Phone: 1-866-781-2922

The Site: Bethel Woods Center for the Arts now has a museum dedicated to the Woodstock Festival, and still has concerts regularly.

Directions:

Turn left onto RT-17M.

Merge onto RT-17 W.

Take the RT-17B exit, EXIT 104,
toward Raceway/Monticello/Airport.

Merge onto RT-17B via the ramp on the left toward
Raceway/Monticello.

Turn right onto Hurd Rd.

Hurd Rd is 0.3 miles past Whitmore Rd

Itinerary-Bethel Woods



“The Happiest Place on Earth”

Bethel Woods Performing Arts Center

Stop 1

Java Love Coffee Roasters

10 Horseshoe Lake Road, ~~Kaucooga~~ Lake,
NY

845-583-4082

HOURS OF OPERATION

Now Open 7 Days a Week

Mon-Thurs 7am-3pm; Fri-Sun 7am-5pm

Java Love Coffee Roasters' mission is to get their customers to taste the best coffee of their lives. Customers have the ability to order their coffee online, as well as walking into their shop in Bethel, New York. With dozens of different varieties and flavors, visitors and even the regular customers will always have new flavors to try out. This is a great stop on any itinerary, because the coffee is so good, it'll be sure to keep you going.

Turn left onto RT-17M.

RT-17M is just past ~~Happy~~ Ave
Pizza Hut is on the corner
If you are on RT-17A and reach Hatfield Ln you've gone about 0.2 miles too far



3.

Merge onto RT-17 W.

31.5 mi



4.

Take the RT-17B exit, EXIT 104, ~~Happy~~ Raceway/Monticello/Airport.

0.3 mi



5.

Merge onto RT-17B via the ramp on the ~~Happy~~ Raceway/Monticello.

7.1 mi



6.

Turn right onto RT-55.
RT-55 is just past Schultz Rd
If you reach Madison Rd you've gone about 0.1 miles too far

0.9 mi

Zoom to this ~~Happy~~ this Step



7.

10 HORSESHOE LAKE RD.
Your destination is just past RT-55
If you reach W Shore Rd you've gone about 0.3 miles too far

Stop 2

Hector's Inn

(845) 583-9740

8 ~~Dr~~ Duggan Rd, Bethel, NY 12720

Directions:

Turn left onto RT-17M.

RT-17M is just past ~~Happy~~ Ave
Pizza Hut is on the corner
If you are on RT-17A and reach Hatfield Ln you've gone about 0.2 miles too far

0.2 mi



3.

Merge onto RT-17 W.

31.5 mi



4.

Take the RT-17B exit, EXIT 104, ~~Happy~~ Raceway/Monticello/Airport.

0.3 mi



5.

Merge onto RT-17B via the ramp on the ~~Happy~~ Raceway/Monticello.
Zoom to this ~~Happy~~ this Step

9.5 mi



6.

Turn left onto ~~Dr~~ Duggan Rd.
~~Dr~~ Duggan Rd is 0.5 miles past Happy Ave
If you reach Whitmore Rd you've gone about 0.1 miles too far

0.04 mi



7.

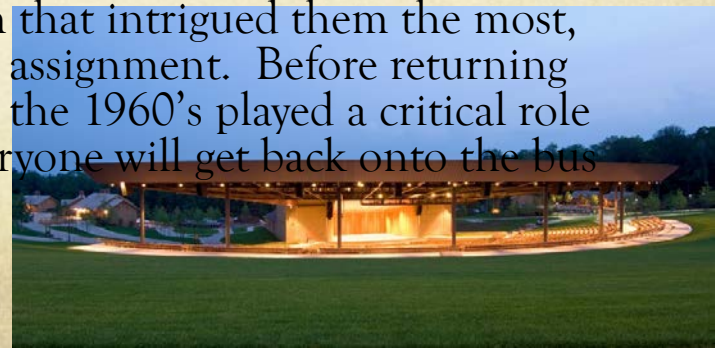
8 DR DUGGAN RD is on the right.
If you reach Indian Field Rd you've gone about 2.1 miles too far



Bethel Woods Lesson

5th Grade Class

- **Overview:** Students from a 5th grade class will take a field trip to Bethel Woods Center for the Arts, and will partake in the program offered by the Center titled, “Explore the Sixties”. This programs objective is the following: “Through a scavenger hunt, tour of the Woodstock field, Sixties dance and more, students explore the tumultuous decade of the 1960s.” Since this program is estimated to take up 2.5 hours, there will not be much time left for other activities. Provided there is time remaining, there will be a class discussion on the 1960’s, where students will have the opportunity to voice their opinions on the decade and the events that took place in that time span.
- **Procedure:** Student, teachers, and chauffeurs will arrive at Bethel Woods Center for the Arts, and shortly thereafter the tour will begin. During the tour, students will jot down notes so that they retain the information, which will later be used to aid their homework assignment. Once the program is finished, students will be allowed to re-explore the areas of the museum that intrigued them the most, allowing them to get a head-start on their homework assignment. Before returning to the bus, teachers will ask students which events in the 1960’s played a critical role in the advancement of society, and how. Finally, everyone will get back onto the bus and return to school.



Bethel Woods Performing Arts Center



“Happiest Place on Earth”

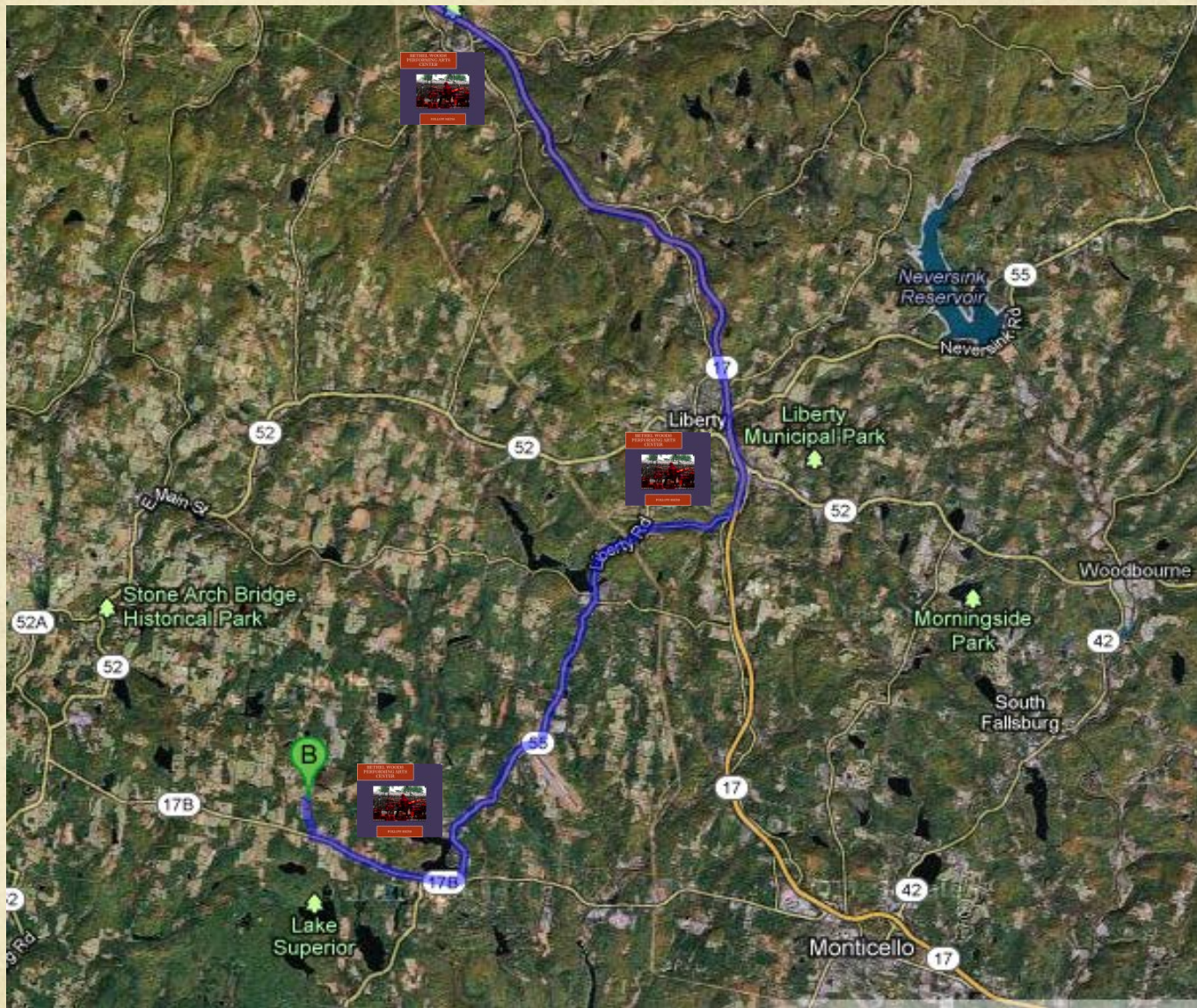
BETHEL WOODS PERFORMING ARTS CENTER



BETHEL WOODS, NY 8/5/12

photo: ROB DAVENPORT, (Bill's drum te

FOLLOW SIGNS



Interpretive Sign



“The Happiest Place on Earth”

Bethel Woods Performing Art Center

- Presents innovative, captivating performances, exhibitions and programs of the highest quality.



- Is a leader in fostering creative expression, civic engagement and entrepreneurial contributions to the public good. A premier authority on the history of the 1960s and that decade's transformative impact on the world. Attracts broad and diverse audiences that fill the house to optimal capacity throughout the year.



- The main attraction is to ride on the dual racing zip line, one of the longest zip lines in the U.S, at over 3,000 feet long.
- You are able to soar 150 feet in the air overlooking the Delaware River at speeds over 50mph.
- Experience everything from rafting, canoeing, kayaking and tubing to camping, paintball and zipping.

Kittatinny Canoes and Zip Lining Guidebook

Barryville Base & Adventure Center
 3854 Route 97, Barryville, NY 12719
<http://www.kittatinny.com>
 1-800-356-2852

Hours: open from 8:00 am to 8:00 pm May through September
 and 9:00 am to 5:00 pm, October through April

The Site:

Kittatinny started 72 years ago, at a place now known as Kittatinny Point Visitor's Center, with only a few boats. Kittatinny has grown into one of the largest fleets of canoes, rafts, kayaks, and tubes in the world.

Directions:

near I-84 E, Port Jervis, NY 12771
 Depart I-84 E

At exit 2, take ramp right and follow signs for Mountain Rd

Turn right onto Mountain Rd / CR-35

Take ramp left and follow signs for I-84 West

At exit 1, take ramp right for US-6 toward Sussex / Port Jervis

Turn left onto US-6

Keep straight onto RT-42 / RT-97 / W Main St

Keep straight onto RT-97

Arrive at SR 97, Barryville, NY 12719



River Trips

Itinerary-Kittatinny Canoes



“Happiest Place on Earth”

Kittatinny Canoes and Zip Line

Stop 1

Ft Delaware Museum of Colonial History

Narrowsburg, NY 12764

(914) 252-6660

Museum Hours, Operating Schedule and Rates:

Friday, Saturday & Monday Hours: 10 am to 5:00 pm

Sunday Hours: 12 Noon to 5:00 pm

Admission: Adults \$7.00 - Children (5-14) \$4.00 - Senior Citizens (62+) \$5.00

Fort Delaware is an authentic depiction of the life of the Delaware Company Pioneers who settled in the Upper Delaware Valley in 1754. A tour of the facilities includes demonstrations of early settlers' lifestyles and craft making. A gift shop, vending area and picnicking facilities are located on the grounds. Fort Delaware is a representation of the first white settlement on the Upper Delaware River, called *Cushetunk*. Today's Fort represents the development of the settlement over a thirty year period. The original settlers were farmers who came primarily from central Connecticut and were of English descent.

1. Start out going northwest on Proctor Rd/RT-55. 0.02 mi
2. Proctor Rd becomes Eldred Rd. 0.2 mi
3. Turn slight left to stay on Eldred Rd. 2.6 mi
4. Eldred Rd becomes Beaver Brook Rd. 4.3 mi
5. Beaver Brook Rd becomes Lumbago Mt Hope Rd. 3.9 mi
6. Turn slight right onto RT-97. 2.4 mi
7. Turn slight right to stay on RT-97. 1.1 mi
8. [6600-6785] STATE ROUTE 97. Your destination is 0.3 miles past Kirk Rd



Stop 2

Barryville Bottle

3344 Rt 97, Suite #4

Barryville, NY 12719

(845) 557-8133

Barryville Bottle is located on the most beautiful route along the prettiest river in the country. Most people visit our Upper DE River to canoe, camp, motorcycle, fish, and visit friends. There are handpicked a small and affordable portfolio of wine and spirits that should make your visit even more memorable.

Merge onto I84
W. 3.7 mi



3. Take the US-6 W exit, EXIT 1, toward RT-23/Port Jervis/Sussex.

0.2 mi



4. Turn left onto US-6.

1.9 mi



5. Stay straight to go onto W Main St/RT-42/RT-97.

0.1 mi



6. Stay straight to go onto W Main St/RT-42/RT-97. Continue to follow RT-97.
Zoom to this Step

18.3 mi



7. 3344 STATE ROUTE 97 STE 4.
Your destination is just past RT-55
If you reach Rd you've gone a little too far

Kittatinny Canoes & Zip Line Lesson

Adventure Sports Center



6th Grade Class

- **Overview:** Before students are able to ride on the zip lines, students must first measure the ground below from the starting point to the finishing point. The students will then receive a sheet listing how tall each of the zip line tower, which will provide them with the other side of their right angle.
- **Procedure:** Students will 1st measure the ground from the starting point to the next zip line post. Students will then receive a sheet listing how tall each tower is. Students will ride the zip line. Students will complete the worksheet using the formula to find the missing side of the right triangle and the distance they just went on the zip line.

Kittatinny Canoes and Zip Line

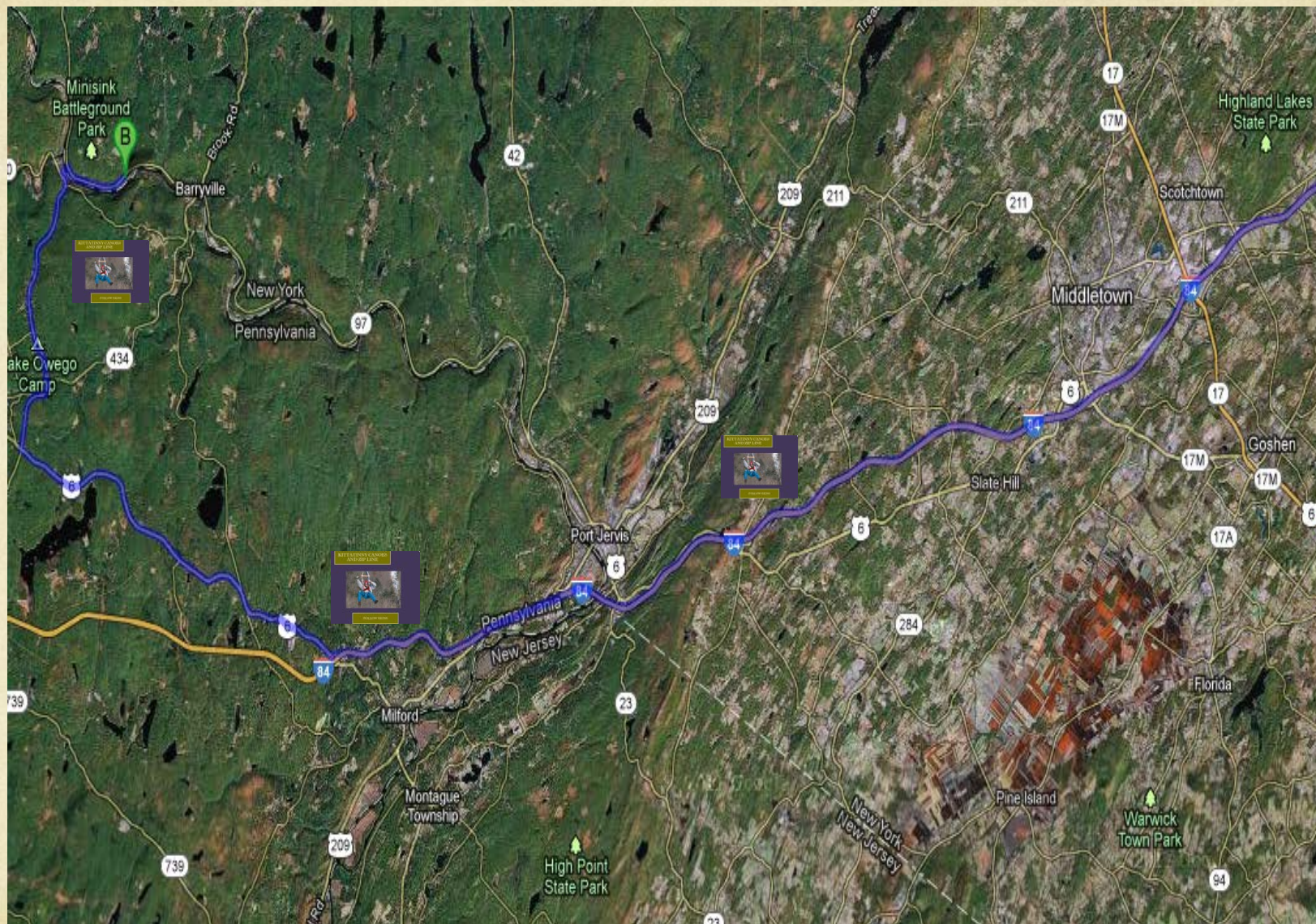


“Happiest Place on Earth”

KITTATINNY CANOES
AND ZIP LINE



FOLLOW SIGNS



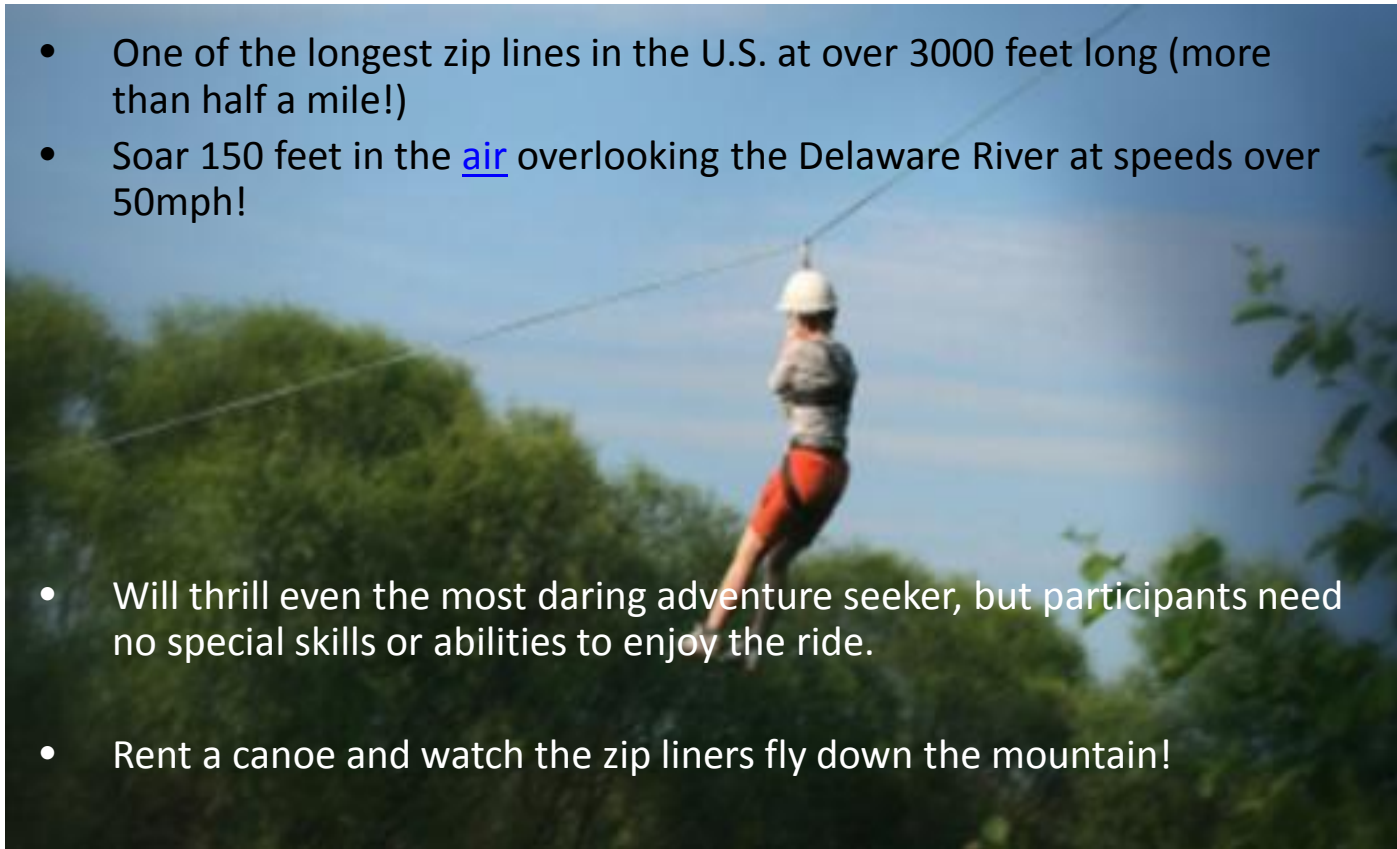
Interpretive Sign



Kittatinny Canoes and Zip Line

“The Happiest Place on Earth”

- One of the longest zip lines in the U.S. at over 3000 feet long (more than half a mile!)
- Soar 150 feet in the [air](#) overlooking the Delaware River at speeds over 50mph!
- Will thrill even the most daring adventure seeker, but participants need no special skills or abilities to enjoy the ride.
- Rent a canoe and watch the zip liners fly down the mountain!



Conclusion



“Happiest Place on Earth”

Overall Sullivan County is a great place to enjoy with your family and friends. There are various recreational sights that can be appreciated by people of all ages. Year round recreational activities make Sullivan County even a more attractive place to visit. Once you visit this beautiful County you will be sure to make a trip back.

Resources

- <http://co.sullivan.ny.us/Default.aspx?TabId=3193>
- <http://www.scva.net/>
- www.facebook.com
- www.twitter.com
- <https://foursquare.com/>
- <http://www.kittatinny.com/>
- <http://www.bethelwoodscenter.org/about.aspx>
- <http://www.monticelloraceway.com/>
- <http://www.holidaymtn.com/>
- <http://nysparks.com/parks/87/details.aspx>
- http://www.sullivancountyhistory.org/index.php?option=com_content&view=section&id=10&Itemid=71



“Happiest Place on Earth”