
Public Buildings:

A Photographic Essay

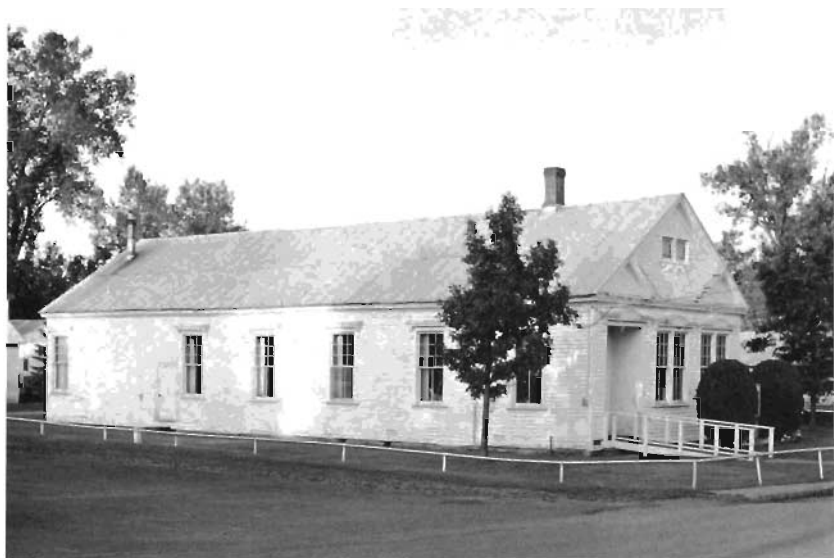
*by Patricia Beringer and
Howard Dratch*



Senate House, Kingston, NY



*Grange Hall,
Pine Plains, NY*



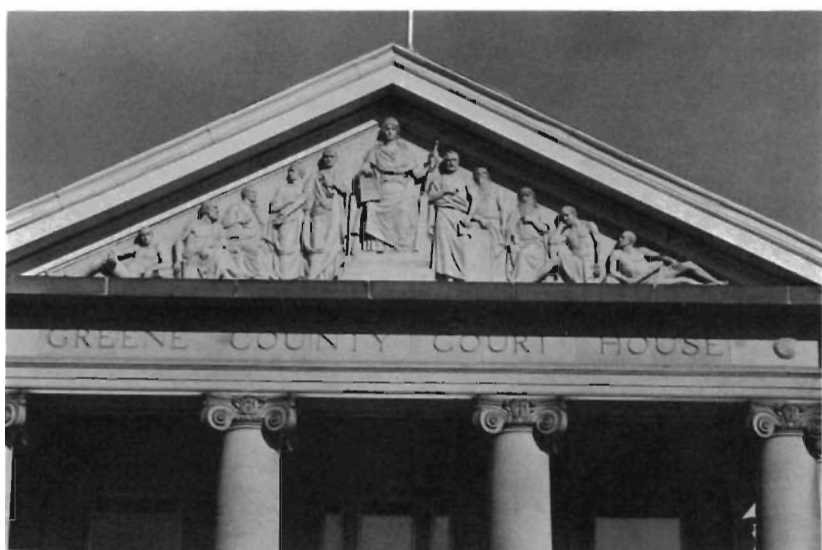
Town Hall, Ghent, NY



*Detail,
Greene County Courthouse*



Greene County Courthouse, Catskill, NY



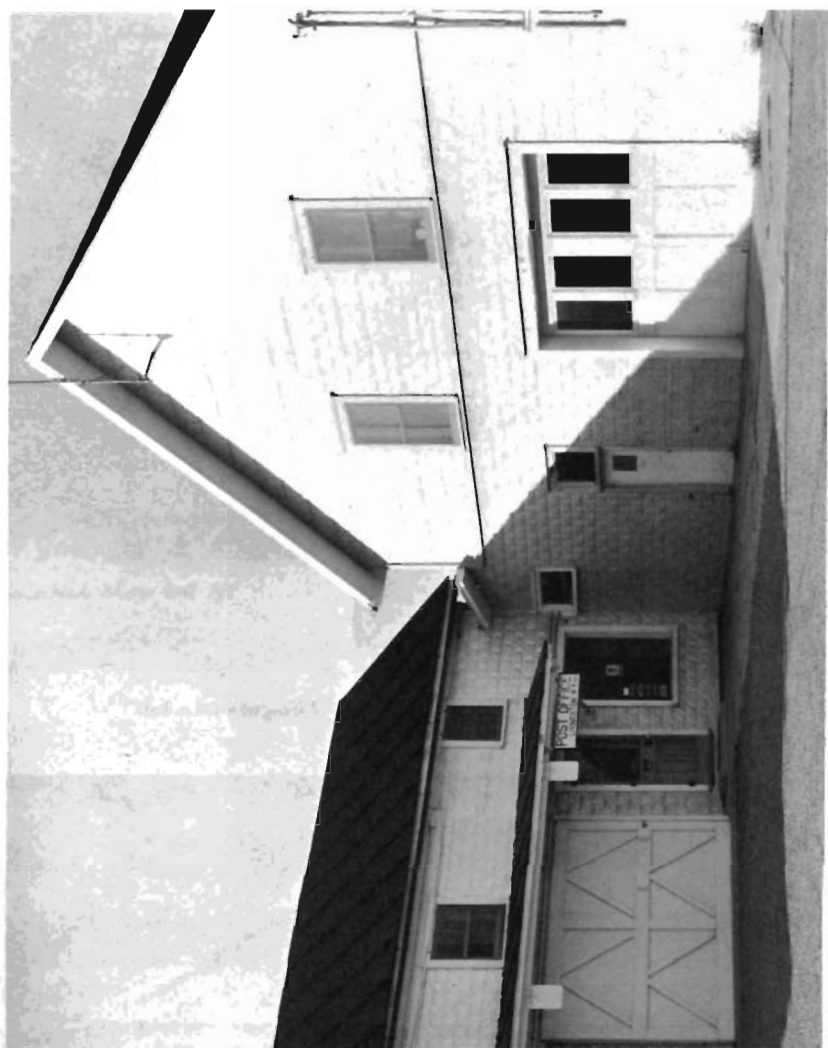
Detail, Greene County Courthouse



*Old courthouse,
Kingston, NY*



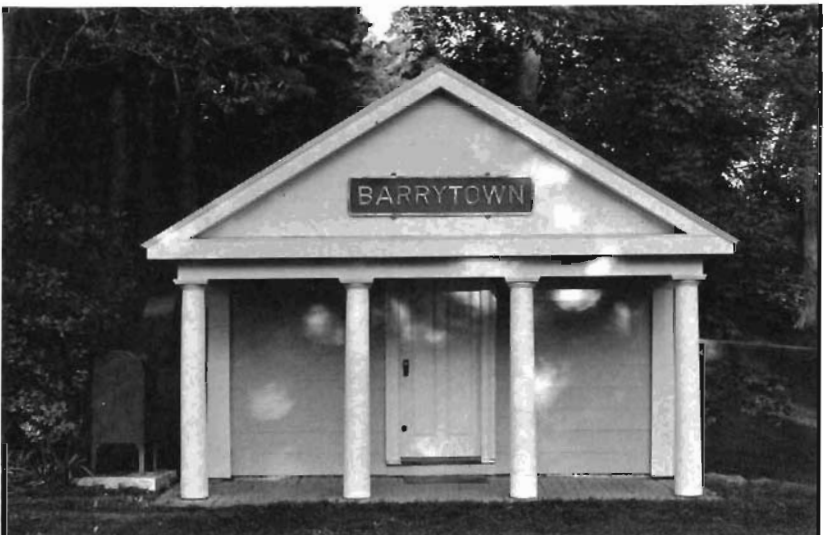
Library, Staatsburg, NY



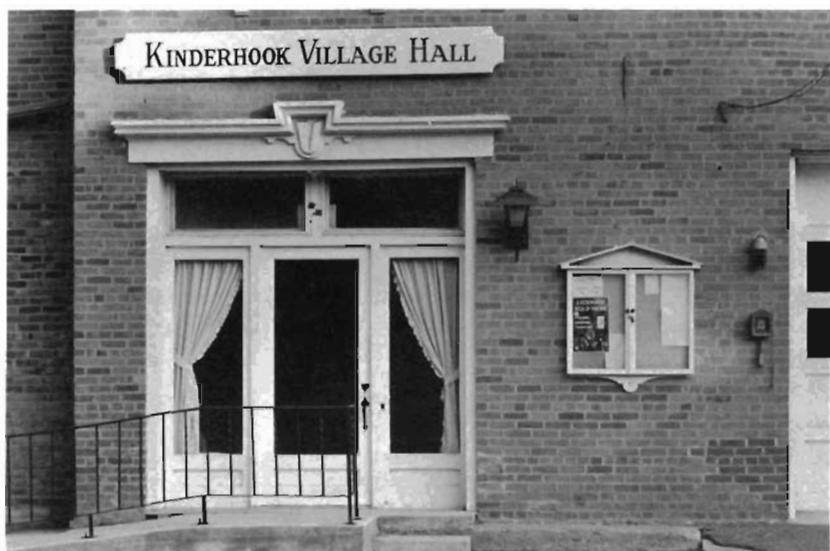
Post office, Livingston, NY



Livingston town hall



Post office and bookstore, Barrytown, NY



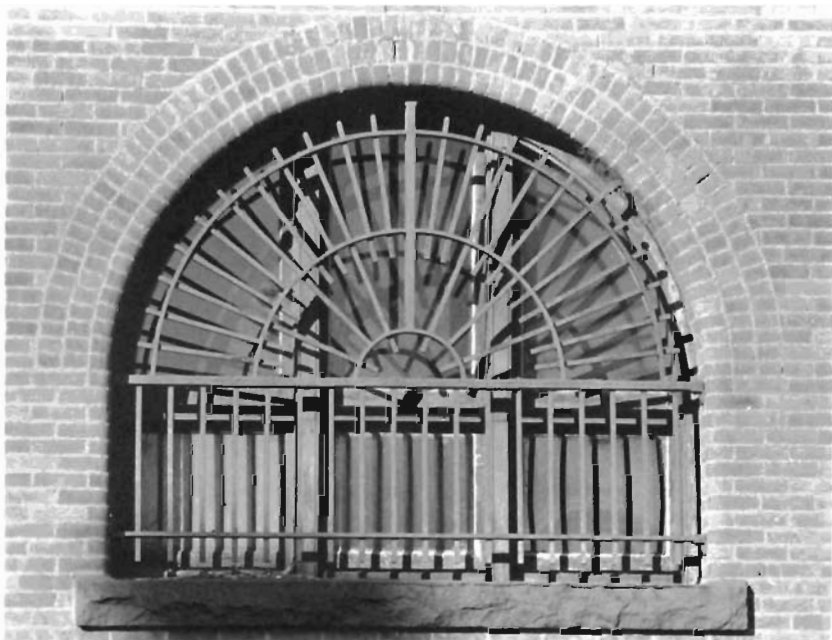
Kinderhook village hall, NY



Detail, Rhinebeck post office, NY



New York State Armory, Poughkeepsie



Detail, New York State Armory, Poughkeepsie



*Lobby,
Adriance Memorial Library*



Railroad Station, Chatham, NY



Copy of a portrait painted between 1845 and 1947 by Asa Weston Twitchell (1820–1860). Painted while Herman Melville resided in Lansingburgh, New York and after he returned from the South Seas. Melville refers to this portrait in "Journal of a Visit to London and the Continent 1849–1850." From the collection of Frances D. Broderick, Lansingburgh, New York. Portrait in the collection of Paul Metcalf, Chester, Massachusetts.