



# Rockland County

Kayla Villante

Pat Cohen

Dorian Misitano

Kristina Ippolito



Nicole Scicolone

# WHY ROCKLAND COUNTY?



- History is well preserved
- Great glimpse of the past
- Museums and actual grounds to visit
- Breathtaking Views of the Hudson River

# TABLE OF CONTENTS



**History of the County & Guidebook for Tourists-**  
Nicole Scicolone

**Key Historic, Cultural & Industrial Sites & Guidebook for Tourists-**  
Kristina Ippolito

**Wayside Exhibit Panels for Key Sites-** Kayla Villante

**Highway Route Markers with Google Earth Links-**  
Pat Cohen

**Chart Comparing Demographics of Key Towns (1860/2010 censuses) & Lesson Plans**  
- Dorian Misitano

1609

- Henry Hudson is the first European to discover Rockland.

1664

- The land of Rockland County was handed over to the English.

1686

- King James II of England, established the county system and designated Orange County.

Henry Hudson

&

King James II



1691

- The first county courthouse was built in Tappan.

1774

- A second county courthouse was built in New City.

1777

- The capture by the British of Fort Clinton at Bear Mountain.

1779

- The victorious attack by General "Mad Anthony" Wayne's army on the British fort at Stony Point.

Tappan  
Courthouse

&

New City  
Courthouse

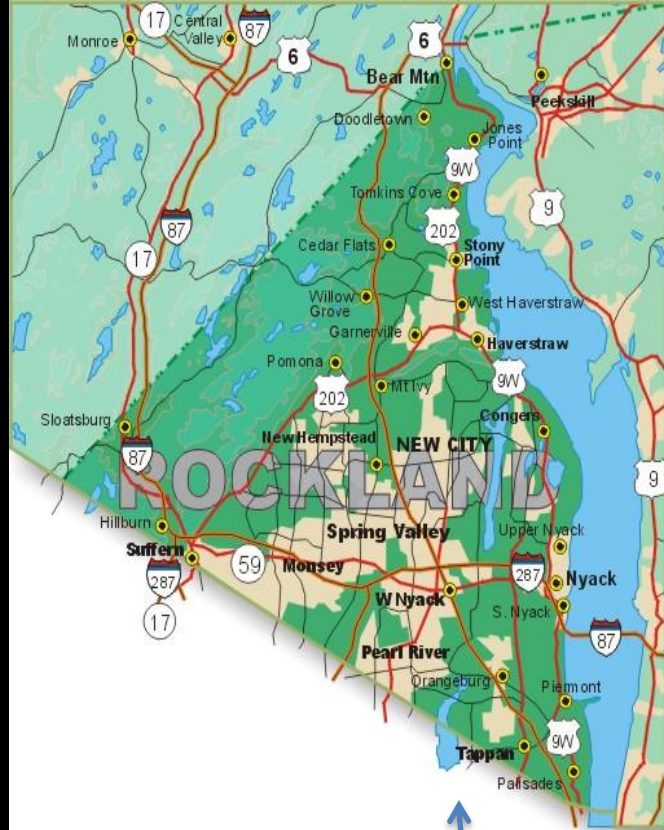


1798

- February 23, Rockland officially became a county!







**Rockland County**



# DeWint House

**DIRECTIONS:** From Exit 5 of the Palisades Interstate Parkway take Route 303 South. At the second light, turn right on Oak Tree Road. Go one block to Livingston Avenue and turn left. The first driveway on the right is the entrance to the DeWint House. Free parking is available on the grounds.

- The DeWint house, located in Tappan, NY, was George Washington's temporary Headquarters during the Revolutionary War on 4 separate instances.
- He visited in August of 1780, September/October 1780, May of 1783, and November 1783.
- Sold to Rem Remsen, after the DeWint family owned the house from 1746-1795.
- When a man of the New York Masons named Chalres H. Johnson heard that the house would possibly be torn down, he purchased the property and declared it a historic site.
- Today it stands the same as it did since 1932

# Jacob Blauvelt House

## DIRECTIONS:

George Washington Bridge (Upper Level). Stay right and take the Palisades Parkway North to Exit 11 (approximately 25 miles or 1/2 hour); right turn on New Hempstead Road approximately 1.7 miles on New Hempstead Road to third light which is Main Street. Turn Left onto Main Street, go 1.5 miles. You will come to a stop sign. Proceed through the stop sign and make the first right into the parking lot of the Historical Society.



- This brick house built by Jacob Blauvelt on his family's farm is a symbol of the Blauvelt's Dutch heritage.
- It was used as an officers club during World War II.
- Blauvelt's descendants lived in the house until 1970, when it was made an Historical site by Rockland County.
- It has been restored to represent how Jacob lived.



# Rockland County Courthouse

## DIRECTIONS:

From palisades parkway, Exit 11 and take New Hempstead Road East for 2 miles.

- The original place of the courthouse was in Tappan, back when Rockland was considered Orange County “South or the Mountains” in 1691. In 1773, a fire occurred, destroying the courthouse.
- .The courthouse was rededicated on September 17th, 1987, in celebration of the 200th anniversary of the signing of the U.S constitution.



# Stony Point Battlefield

To reach the park, take the Palisades Interstate Parkway to exit 15. Go east on Route 106/210 for 2.4 miles to Route 9W. Turn left on Route 9W and proceed north through the village of Stony Point for 0.8 miles and then turn right on Park Road. Stay to your left at the bottom of the hill, and the site entrance is straight ahead.

- Site of one of the last battles of the Revolutionary War (in the northeastern colonies)
- Today there is an on-site museum
- It also features the historic Stony Point Lighthouse, built in 1826
- Today used to symbolize the importance of lighthouses to commerce on the Hudson River.

# Camp Shanks



## Directions:

Take Palisades Parkway South to Exit 6 East

Merge onto Orangeburg Road

Proceed to traffic light at intersection of Rte. 303

Right turn on Rte. 303 South and stay in right lane

At very next traffic light watch for Gulf service station and Camp Shanks Museum sign.

- This area located in Tappan, New York, was used in World War II as an place for soliders to embark
- Over 1.3 million soldiers were processed through this staging area.
- The museum today exhibits focus on military life in Camp Shanks during World War II.

# Interpretive Signs of Historical Sites in the Beautiful Rockland County



1. DeWint House



2. Jacob Blauvelt House



3. Rockland County  
Courthouse



4. Stony Point Battlefield



5. Camp Shanks

# Highway Route Markers Leading to Key Sites





# STONY POINT BATTLEPOINT

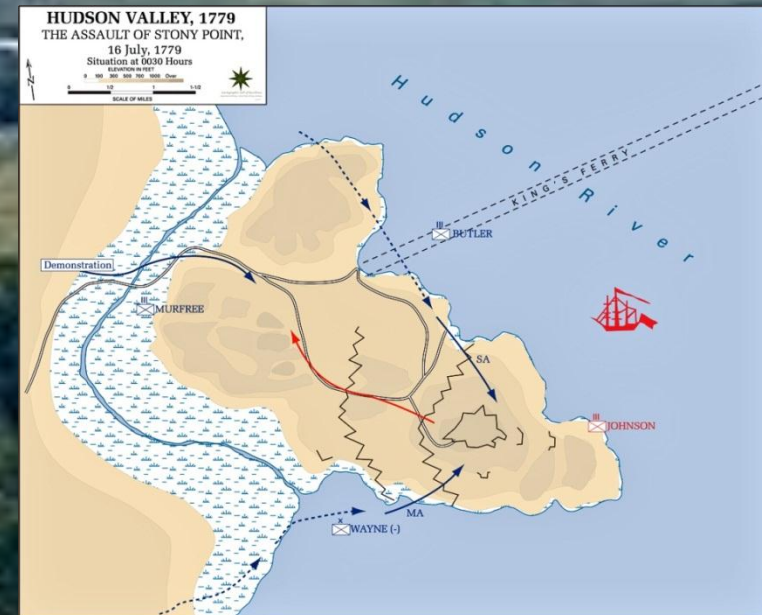
Rockland County is of historical significance dating all the way back to when Henry Hudson first discovered the area in 1609. Today it is remembered for battles throughout the American Revolution.

- Site of the last Revolutionary War in the northeastern colonies.
- This is where midnight assault occurred by the American Light Infantry against a British garrison in 1779.
- Built in 1826 the Stony Point Lighthouse is the oldest lighthouse on the Hudson River

Grounds: Mid-April-October Mon-Sat 10-5 & Sun 12-5 (Winter closing 4pm)

Museum Open: Wed-Sat > 10-4:30 Sun > 12-4:30

At various times throughout the year there is a fee  
**Phone: (845)-786-2521.**



# **Stony Point Battlefield**

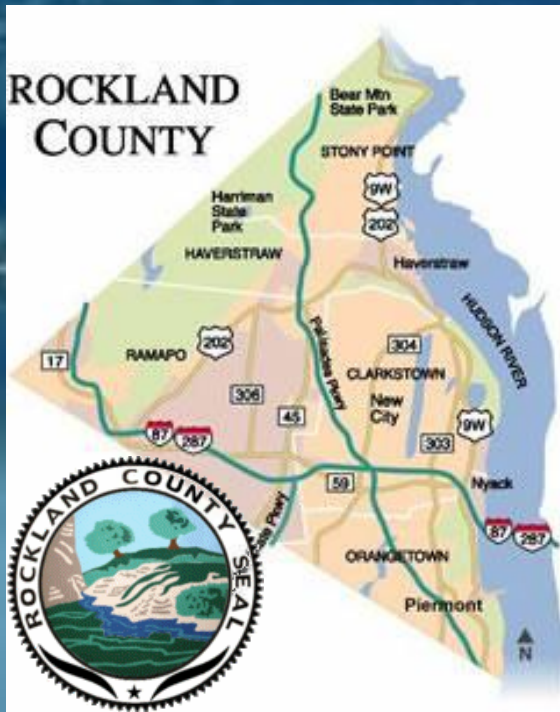


**Stony Point, NY  
X Miles**

# DEWINT HOUSE

Rockland County is of historical significance dating all the way back to when Henry Hudson first discovered the area in 1609. Today it is remembered for battles throughout the American Revolution.

- Washington served as a guest in the house on 4 different occasions
- The oldest surviving structure in Rockland County, New York
- Excellent example of Colonial Dutch architecture in the Hudson Valley.
- Grounds which display artifacts are open to the public without fee, 10 a.m. to 4 p.m. daily except Monday and for Thanksgiving and Christmas.
- Call 845-359-1359 or e-mail [info@dewinhouse.com](mailto:info@dewinhouse.com) for further information.



# The DeWint House



**Tappan, NY**  
**X Miles**

# JACOB BLAUVELT HOUSE

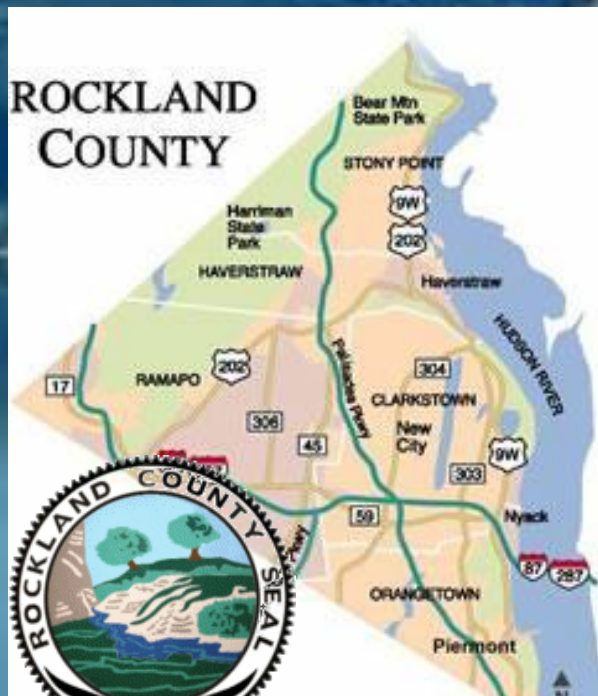
Rockland County is of historical significance dating all the way back to when Henry Hudson first discovered the area in 1609. Today it is remembered for battles throughout the American Revolution.

-In this large home the Blauvelt's could produce more milk, butter, eggs, rye and corn selling the extra for profit  
-Profit allowed them the luxury of furnishing the house nicely

Open: 12pm- 4pm Sundays, November - March 1pm-5pm Sundays, April - October

Museum and History Center: Tuesday- Sunday between November & March from 1pm-5pm & between April and October from 12pm-4pm

Contact: (845) 634-9629 to confirm the hours



# **The Jacob Blauvelt House**

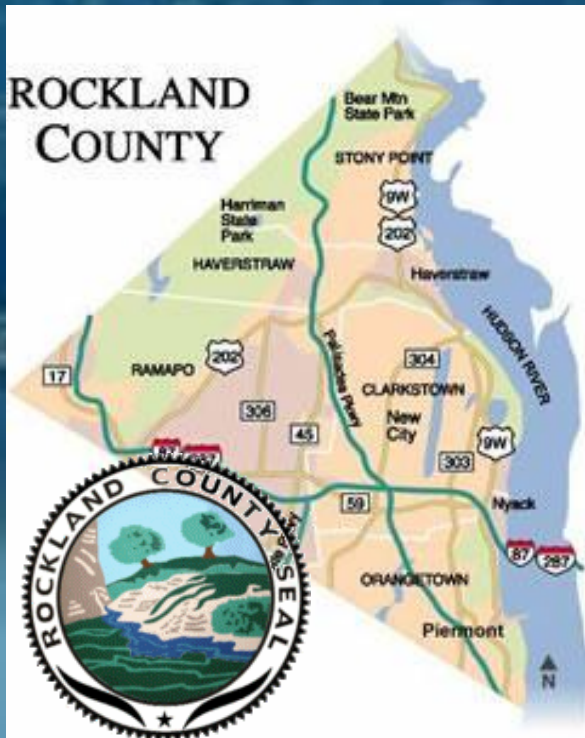


**New City, NY  
X Miles**

# ROCKLAND COUNTY COURTHOUSE

Rockland County is of historical significance dating all the way back to when Henry Hudson first discovered the area in 1609. Today it is remembered for battles throughout the American Revolution.

- Built in 1928, the Art Deco architecture style is original to the style of the mid-20's
- WWI Memorial, the Rockland County Service Memorial, the Korean and Vietnam Memorial, the Man of Light sculpture and the WWII.

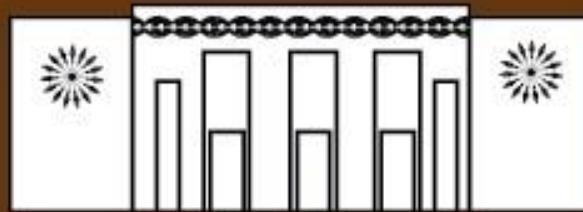


-Represents the developing role of the American civil and judicial system at the local level

Contact: 845-638-5393

Open to the Public: Monday-Friday 9am-5pm

**Rockland  
County  
Courthouse**



**New City, NY  
X Miles**



# CAMP SHANKS

Rockland County is of historical significance dating all the way back to when Henry Hudson first discovered the area in 1609. Today it is remembered for battles throughout the American Revolution.

- Used from June 1943 to July 1946 as a large embarkment point for about 1.3 million soldiers during WWII
  - 75% were involved in the invasion of Normandy
  - Visit the Camp Shanks WWII Museum
  - Open Spring, Summer and Fall on Saturdays and Sundays from 12pm to 4pm.
- Contact: (845) 658-5244



# **Camp SHANKS**



**Orangetown, NY  
X Miles**

# Population by Age in 1860

	White		Black	
	Male	Female	Male	Female
<b>Under 1</b>	<b>334</b>	<b>375</b>	<b>2</b>	<b>14</b>
<b>1 to under 5</b>	<b>1242</b>	<b>1242</b>	<b>42</b>	<b>25</b>
<b>5 to under 10</b>	<b>1366</b>	<b>1219</b>	<b>28</b>	<b>27</b>
<b>10 to under 15</b>	<b>1109</b>	<b>1063</b>	<b>30</b>	<b>39</b>
<b>15 to under 20</b>	<b>1125</b>	<b>1020</b>	<b>24</b>	<b>43</b>
<b>20 to under 30</b>	<b>2446</b>	<b>1895</b>	<b>49</b>	<b>47</b>
<b>30 to under 40</b>	<b>1637</b>	<b>1454</b>	<b>21</b>	<b>27</b>
<b>40 to under 50</b>	<b>1108</b>	<b>899</b>	<b>36</b>	<b>34</b>
<b>50 to under 60</b>	<b>640</b>	<b>516</b>	<b>21</b>	<b>13</b>
<b>60 to under 70</b>	<b>353</b>	<b>386</b>	<b>9</b>	<b>5</b>
<b>70 to under 80</b>	<b>106</b>	<b>203</b>	<b>6</b>	<b>3</b>
<b>80 to under 90</b>	<b>45</b>	<b>47</b>	<b>1</b>	<b>3</b>
<b>90 to under 100</b>	<b>3</b>	<b>2</b>		<b>1</b>
<b>Over 100</b>				
<b>Total</b>	<b>11583</b>	<b>10036</b>	<b>269</b>	<b>280</b>

# National v Foreign Born 1860

National Born									Foreign Born								
White			Black			Mulatto			White			Black			Mulatto		
M	F	T	M	F	T	M	F	T	M	F	T	M	F	T	M	F	T
8536	2335	16871	244	254	498	25	25	50	3047	2025	5072		1	1			



# Population statistics for 2010 in Rockland County

- Under 5 yrs → 7.6%
- Under 18 yrs → 28.1%
- 65 and over → 13.4%
- Female → 51.0%
- White → 73.2%
- Black → 11.9%
- Foreign born → 22.1% (2006-2010)



# Tourism Sites:

<http://www.hudsonrivervalley.org/counties/rockland.html>

<http://www.facebook.com/pages/Rockland-County-Tourism/138147622919908>

<http://www.hvwebtv.com/rockland.html>

<http://newyork.hometownlocator.com/features/cultural,class,park,scfips,36087.cfm>

[http://www.rocktourism.com/index.php?/blog/food\\_blog](http://www.rocktourism.com/index.php?/blog/food_blog)

<http://www.rocktourism.com/index.php?/events>

<http://www.rocklandhistory.org/>

[http://www.rocktourism.com/index.php?/historic\\_sites](http://www.rocktourism.com/index.php?/historic_sites)

<http://www.co.rockland.ny.us/planning/historic/historic.htm>

<http://www.aahsofrockland.org/>

<http://www.rootsweb.ancestry.com/~nyrockla/history.htm>

<http://www.orangetownmuseum.com/>

<http://www.holocauststudies.org/>

<http://www.haverstrawbrickmuseum.org/>

<http://www.harvestofhistory.org/index.html>

[http://www.thingstodo.com/states/NY/hudson\\_valley.htm](http://www.thingstodo.com/states/NY/hudson_valley.htm)

[http://dir.hudsonvalleysojourner.com/s/Historical\\_Society\\_of\\_Rockland\\_County/](http://dir.hudsonvalleysojourner.com/s/Historical_Society_of_Rockland_County/)

<http://www.museumsusa.org/museums/info/3711>

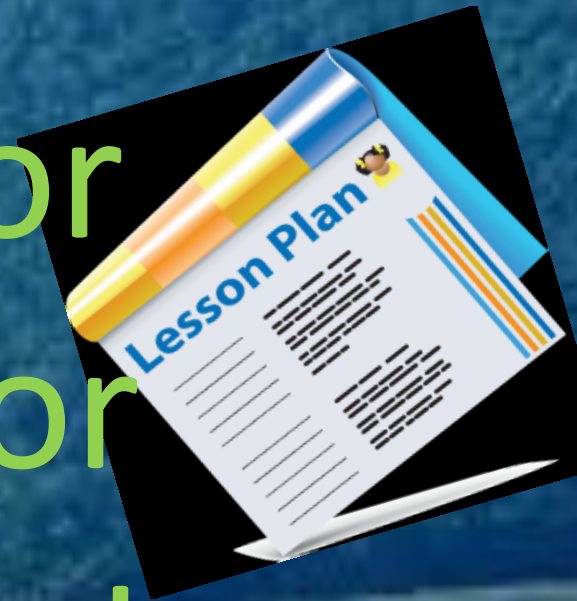
<http://rocklandgenealogy.org/>

<http://www.co.rockland.ny.us/Arts/gallery.html>

<http://www.hudson-river-valley.com/htm/Rockland/Link0452.html>



# Lesson Plans for Student Visits or Heritage Tourists to Key Sites of Rockland:



## DeWint House

Overview: Learn about Washington's former headquarters and what it took to organize the Revolution

Learning Intelligences Used: Inquiry, Discovery Learning

Standards: Standard 1: History of the United States and New York. Students will use a variety of intellectual skills and knowledge to demonstrate their understanding of main ideas, time periods, eras, themes, figures in the history of the United States and New York

### Objectives

The students will:

1. Learn what it took to plan the revolution
2. Learn about the revolution

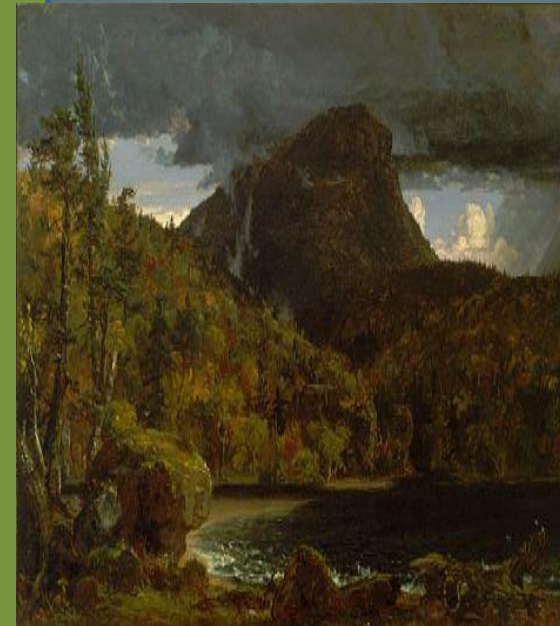
Materials: KWL chart, list of needs, Top 10 Most Important sheet

### Procedures:

Activate prior knowledge: Ask the students what they know about the Revolution before we leave for the trip, this can be done using a KWL chart and the rest will be filled out upon return from the DeWint house or the next day.

I would ask the students on the way up what they think it took to plan out the revolution. Upon arrival to the DeWint house and after the tour, I would have them fill out a list of needs that they think are the most important for the revolution. The list can include the number of soldiers, supplies, as well as strategy ideas.

Closure: To wrap everything up, I would put the students into groups and have them share their ideas. They would then make a list of what they think the top 10 most important things are from their lists. We would then compile all the lists as a class and finish the KWL chart.





## Jacob Blauvelt House

Overview: The Students will learn about Dutch heritage

Learning Intelligences: Inquiry, Discovery Learning

Standards: History of the United States and New York. Students will use a variety of intellectual skills and knowledge to demonstrate their understanding of main ideas, time periods, eras, themes, figures in the history of the United States and New York

Objectives:

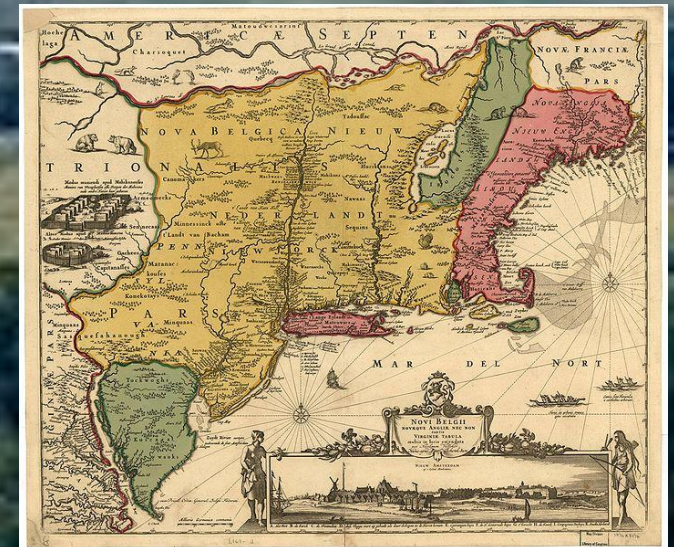
The students will:

1. Learn about life for Dutch settlers
2. Understand how technology has changed over time

Materials: Information and examples about Old Technology

Procedure: To activate prior knowledge the students will go over what types of technology were available to the Dutch settlers and compare it to the technologies that we have today. At the Blauvelt House, the students will learn what everyday life was like for the people in the area. They will also know what life was like for rich settlers as compared to poor settlers.

Closure: The students will write in their journal what they have learned. They will also have the opportunity to choose one piece of technology from the Blauvelt House that they have learned about, how it has changed to our time and how they believe that it will change for the future. For example, letters were written on pieces of paper and had to be shipped, making mail infrequent and often unreliable. Now, mail and information is instantaneous; in the future, things could travel telepathically.



## Rockland County Court House

**Overview:** The students will learn about the judicial branch of government by holding a mock trial at the court house

**Learning Intelligences:** Inquiry, Discovery Learning

**Standards:** History of the United States and New York. Students will use a variety of intellectual skills and knowledge to demonstrate their understanding of main ideas, time periods, eras, themes, figures in the history of the United States and New York

**Objectives:**

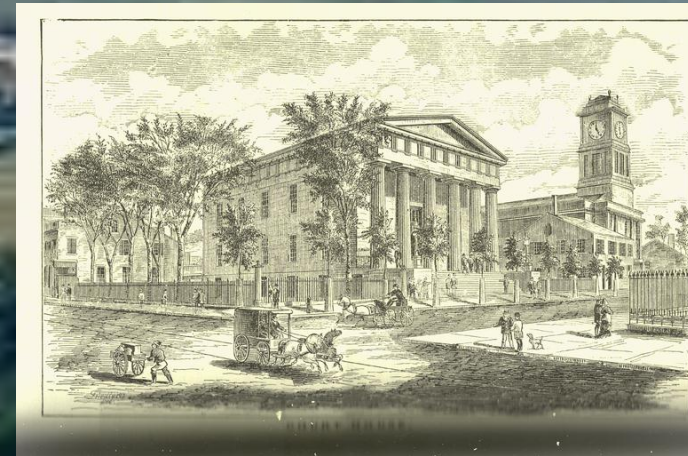
The students will:

1. Understand how a court hearing works
2. Learn about the architecture of the court house

**Materials:** costumes, court case (possibly Plessy v Ferguson), notebooks for notes, journals for after

**Procedure:** To activate prior knowledge, I would go over the three branches of government as well as the system of checks and balances. I would then assign roles to the students by pulling names out of a hat. The roles are the jury, the judge, and the two sides of the argument. At the courthouse, the students will assume their roles and take notes as to what exactly happens in a courtroom, who is allowed to speak when and such. After the role playing, the students will write in their journals about the experience.

**Closure:** The students will have the opportunity to share what they thought about the courthouse proceedings the day after the trip.



## Stony Point Battlefield

**Overview:** The students will learn about the final battle of the Revolutionary War (in the NE colonies) that took place at Stony Point by re-enacting the famous battle.

**Learning Intelligences:** Inquiry, Discovery Learning

**Standards:** History of the United States and New York. Students will use a variety of intellectual skills and knowledge to demonstrate their understanding of main ideas, time periods, eras, themes, figures in the history of the United States and New York  
**Objectives:**

The students will:

1. Learn about the last battle of the Revolution that was fought in the North East Colonies
2. The students will learn about what life was like during the revolution

**Materials:** Scavenger Hunt checklist, Journals

**Procedure:** To activate prior knowledge, the students will go over what they have learned about the Revolution until this point (this lesson would be towards the end of the unit). The students will be assigned different generals who fought at Stony Point by picking names out of a hat. They will then research some background information about their general leading up to the trip. Once the class arrives at the battlefield, we will go over the major military moves that led up to this battle as well as what happened.

**Closure:** The students will write in their journals about how the actions of their general affected the outcome of the battle.



## Camp Shanks

Overview: The students will learn what life was like for soldiers leaving for WWII at Camp Shanks

Learning Intelligences: Inquiry, Discovery Learning

Standards: History of the United States and New York. Students will use a variety of intellectual skills and knowledge to demonstrate their understanding of main ideas, time periods, eras, themes, figures in the history of the United States and New York

Objectives:

The students will:

1. Understand what life was like for a soldier
2. Know how the camp was laid out and why

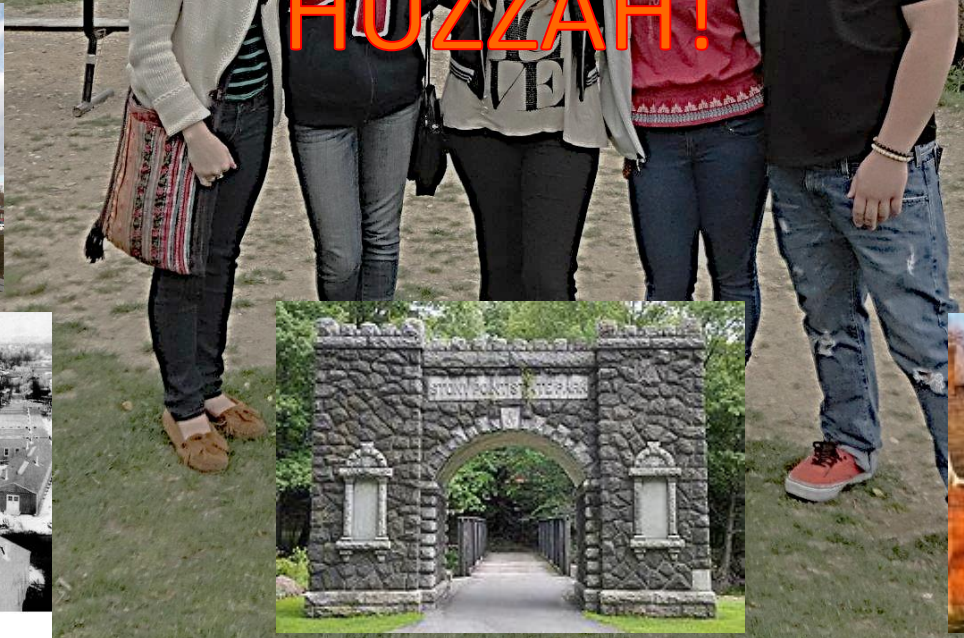
Materials: Scavenger Hunt List & Materials for Scavenger Hunt

Procedure: Before leaving for the trip, the students will go over the events that led up to WWII and the feelings that American's had about the war. Once at Camp Shanks, the students will experience what it was like for soldiers who were leaving everything they knew to fight for America and the freedoms of its people. They will then go on a scavenger hunt about the camp and learn about the different areas such as the barracks and the mess hall.

Closure: The following day, the students will write a letter to their family about their time at Camp Shanks including the type of training that was done as well as describing the way the camp is physically.



We hope you've enjoyed learning  
about EVERYTHING Rockland  
County has to offer!  
HUZZAH!



61b. Camp Shanks, Orangeburg, New York (USA)



# Resources

- <http://www.nanuetfrc.org/Images/RockMap.gif&w=175&h=212&ei=mp9NT5btBqH10gGHiOn0Ag&zoom=1&iact=rc&dur=391&sig=116319380503115881455&page=1&tbnh=138&tbnw=114&start=0&ndsp=53&ved=1t:429,r:12,s:0&tx=36&ty=46&biw=1893&bih=943>
- [http://upload.wikimedia.org/wikipedia/commons/thumb/a/a4/Map\\_of\\_New\\_York\\_highlighting\\_Rockland\\_County.svg/787px-Map\\_of\\_New\\_York\\_highlighting\\_Rockland\\_County.svg.png&w=787&h=600&ei=mp9NT5btBqH10gGHiOn0Ag&zoom=1&iact=rc&dur=311&sig=116319380503115881455&page=1&tbnh=136&tbnw=178&start=0&ndsp=53&ved=1t:429,r:11,s:0&tx=142&ty=86&biw=1893&bih=943](http://upload.wikimedia.org/wikipedia/commons/thumb/a/a4/Map_of_New_York_highlighting_Rockland_County.svg/787px-Map_of_New_York_highlighting_Rockland_County.svg.png&w=787&h=600&ei=mp9NT5btBqH10gGHiOn0Ag&zoom=1&iact=rc&dur=311&sig=116319380503115881455&page=1&tbnh=136&tbnw=178&start=0&ndsp=53&ved=1t:429,r:11,s:0&tx=142&ty=86&biw=1893&bih=943)
- <http://newyork.cbslocal.com/top-lists/best-rockland-county-restaurants/&docid=L8gXBW1EOBjOM&imgurl=http://cbsnewyork.files.wordpress.com/2010/12/rockland-county.jpg%253Fw%253D420&w=420&h=315&ei=aj5NT8TlBsPfoQHP58zXAg&zoom=1&iact=rc&dur=255&sig=116319380503115881455&page=2&tbnh=142&tbnw=217&start=58&ndsp=55&ved=1t:429,r:6,s:58&tx=110&ty=60&biw=1893&bih=943>
- [http://www.emersonkent.com/map\\_archive/battle\\_of\\_stony\\_point\\_02.htm](http://www.emersonkent.com/map_archive/battle_of_stony_point_02.htm)
- <https://www.google.com/search?ix=seb&q=dewint+house&um=1&ie=UTF-8&hl=en&tbm=isch&source=og&sa=N&tab=wi&ei=EcZOT-yhH6nX0QGyIZSeBw&biw=1062&bih=492&sei=FsZOT9qtMuHV0QG11u3gAg>
- [http://www.randrealty.com/communityprofiles.aspx%3Fcommunity%3Dnew%2Bcity&docid=ZLuguTFuPLHI3M&imgurl=http://www.randrealty.com/tours/tempthumb/tp228\\_225.jpg&w=225&h=170&ei=zs1OT\\_L8i8Tz0gH45vW6Ag&zoom=1&iact=hc&vpx=385&vpy=255&dur=392&hovh=136&hovw=180&tx=73&ty=141&sig=112078576386158500218&page=2&tbnh=136&tbnw=180&start=10&ndsp=15&ved=1t:429,r:6,s:10](http://www.randrealty.com/communityprofiles.aspx%3Fcommunity%3Dnew%2Bcity&docid=ZLuguTFuPLHI3M&imgurl=http://www.randrealty.com/tours/tempthumb/tp228_225.jpg&w=225&h=170&ei=zs1OT_L8i8Tz0gH45vW6Ag&zoom=1&iact=hc&vpx=385&vpy=255&dur=392&hovh=136&hovw=180&tx=73&ty=141&sig=112078576386158500218&page=2&tbnh=136&tbnw=180&start=10&ndsp=15&ved=1t:429,r:6,s:10)
- [http://pearlriver.patch.com/articles/rockland-county-bar-association-interviewed-judicial-candidates&docid=l7lFfACjFiNxbM&imgurl=http://o5.aolcdn.com/dims-shared/dims3/PATCH/resize/273x203/http://hss-prod.hss.aol.com/hss/storage/patch/a4fdbd8424cd719dd2747ddd72bae021&w=271&h=203&ei=gNBOT5\\_tKfK00QH0r\\_3AAg&zoom=1](http://pearlriver.patch.com/articles/rockland-county-bar-association-interviewed-judicial-candidates&docid=l7lFfACjFiNxbM&imgurl=http://o5.aolcdn.com/dims-shared/dims3/PATCH/resize/273x203/http://hss-prod.hss.aol.com/hss/storage/patch/a4fdbd8424cd719dd2747ddd72bae021&w=271&h=203&ei=gNBOT5_tKfK00QH0r_3AAg&zoom=1)
- [http://www.gallagher.com/ww2/chapter9.html&docid=2o5gy3k1TgWMdM&imgurl=http://www.gallagher.com/ww2/images/Camp\\_Shanks\\_9\\_61b.jpg&w=700&h=552&ei=d9NOT8mW\\_DqLn0QHe3bTfAg&zoom=1&iact=rc&dur=341&sig=112078576386158500218&page=1&tbnh=137&tbnw=200&start=0&ndsp=11&ved=1t:429,r:0,s:0&tx=99&ty=61](http://www.gallagher.com/ww2/chapter9.html&docid=2o5gy3k1TgWMdM&imgurl=http://www.gallagher.com/ww2/images/Camp_Shanks_9_61b.jpg&w=700&h=552&ei=d9NOT8mW_DqLn0QHe3bTfAg&zoom=1&iact=rc&dur=341&sig=112078576386158500218&page=1&tbnh=137&tbnw=200&start=0&ndsp=11&ved=1t:429,r:0,s:0&tx=99&ty=61)
- [http://www.encore-editions.com/albert-bierstadt-landscape-rockland-county-california-1872-approximate-original-size-19x26&docid=7v4ovNa\\_a5d6aM&imgurl=http://prints.encore-editions.com/500/0/albert-bierstadt-landscape-rockland-county-california-1872-approximate-original-size-19x26.jpg&w=500&h=349&ei=CsZRT\\_DZG4Hq0gGFpOm9DQ&zoom=1&iact=rc&dur=250&sig=112078576386158500218&page=6&tbnh=143&tbnw=183&start=74&ndsp=15&ved=1t:429,r:9,s:74&tx=150&ty=51](http://www.encore-editions.com/albert-bierstadt-landscape-rockland-county-california-1872-approximate-original-size-19x26&docid=7v4ovNa_a5d6aM&imgurl=http://prints.encore-editions.com/500/0/albert-bierstadt-landscape-rockland-county-california-1872-approximate-original-size-19x26.jpg&w=500&h=349&ei=CsZRT_DZG4Hq0gGFpOm9DQ&zoom=1&iact=rc&dur=250&sig=112078576386158500218&page=6&tbnh=143&tbnw=183&start=74&ndsp=15&ved=1t:429,r:9,s:74&tx=150&ty=51)
- [http://en.wikipedia.org/wiki/DeWint\\_House&docid=C9qzwKv9aTN71M&imgurl=http://upload.wikimedia.org/wikipedia/commons/thumb/c/c7/DeWintHouse\\_house\\_2007\\_02.jpg/250px-DeWintHouse\\_house\\_2007\\_02.jpg&w=250&h=166&ei=QcdRT-3QHqPZ0QGijunmDQ&zoom=1&iact=hc&vpx=394&vpy=194&dur=108&hovh=132&hovw=200&tx=73&ty=76&sig=112078576386158500218&page=1&tbnh=132&tbnw=200&start=0&ndsp=6&ved=1t:429,r:2,s:0](http://en.wikipedia.org/wiki/DeWint_House&docid=C9qzwKv9aTN71M&imgurl=http://upload.wikimedia.org/wikipedia/commons/thumb/c/c7/DeWintHouse_house_2007_02.jpg/250px-DeWintHouse_house_2007_02.jpg&w=250&h=166&ei=QcdRT-3QHqPZ0QGijunmDQ&zoom=1&iact=hc&vpx=394&vpy=194&dur=108&hovh=132&hovw=200&tx=73&ty=76&sig=112078576386158500218&page=1&tbnh=132&tbnw=200&start=0&ndsp=6&ved=1t:429,r:2,s:0)

# Resources Continued

- [http://www.google.com/imgres?um=1&hl=en&sa=N&biw=696&bih=509&tbn=isch&tbnid=uEGnJ24VSYk5-M:&imgrefurl=http://en.wikipedia.org/wiki/Stony\\_Point\\_Battlefield&docid=2og-CJgBMUfCwM&imgurl=http://upload.wikimedia.org/wikipedia/commons/thumb/d/d9/Stony\\_Point\\_State\\_Park.jpg/250px-Stony\\_Point\\_State\\_Park.jpg&w=250&h=177&ei=u8dRT6nxB\\_GK0QHlzcX9Dw&zoom=1](http://www.google.com/imgres?um=1&hl=en&sa=N&biw=696&bih=509&tbn=isch&tbnid=uEGnJ24VSYk5-M:&imgrefurl=http://en.wikipedia.org/wiki/Stony_Point_Battlefield&docid=2og-CJgBMUfCwM&imgurl=http://upload.wikimedia.org/wikipedia/commons/thumb/d/d9/Stony_Point_State_Park.jpg/250px-Stony_Point_State_Park.jpg&w=250&h=177&ei=u8dRT6nxB_GK0QHlzcX9Dw&zoom=1)
- [http://www.google.com/imgres?um=1&hl=en&biw=1062&bih=509&tbn=isch&tbnid=OLM192W\\_8XaYjM:&imgrefurl=http://www.encore-editions.com/albert-bierstadt-landscape-rockland-county-california-1872-approximate-original-size-19x26&docid=7v4ovNa\\_a5d6aM&imgurl=http://prints.encore-editions.com/500/0/albert-bierstadt-landscape-rockland-county-california-1872-approximate-original-size-19x26.jpg&w=500&h=349&ei=CszRT\\_DZG4Hq0gGFpOm9DQ&zoom=1&iact=rc&dur=250&sig=112078576386158500218&page=6&tbnh=143&tbnw=183&start=74&ndsp=15&ved=1t:429,r:9,s:74&tx=150&ty=51](http://www.google.com/imgres?um=1&hl=en&biw=1062&bih=509&tbn=isch&tbnid=OLM192W_8XaYjM:&imgrefurl=http://www.encore-editions.com/albert-bierstadt-landscape-rockland-county-california-1872-approximate-original-size-19x26&docid=7v4ovNa_a5d6aM&imgurl=http://prints.encore-editions.com/500/0/albert-bierstadt-landscape-rockland-county-california-1872-approximate-original-size-19x26.jpg&w=500&h=349&ei=CszRT_DZG4Hq0gGFpOm9DQ&zoom=1&iact=rc&dur=250&sig=112078576386158500218&page=6&tbnh=143&tbnw=183&start=74&ndsp=15&ved=1t:429,r:9,s:74&tx=150&ty=51)
- [http://www.google.com/imgres?um=1&hl=en&biw=1015&bih=504&tbn=isch&tbnid=DArjx0Q9GRmz6M:&imgrefurl=http://www.zazzle.com/rockland\\_county\\_route\\_20\\_ny\\_sticker-217799316750176289&docid=sPiNq71tFwCWPM&imgurl=http://rly.zcache.com/rockland\\_county\\_route\\_20\\_ny\\_sticker-p217799316750176289z85xz\\_400.jpg&w=400&h=400&ei=eeFTT7f8M\\_Pq0QG1oKDvDQ&zoom=1&iact=rc&dur=300&sig=112078576386158500218&page=6&tbnh=149&tbnw=133&start=74&ndsp=14&ved=1t:429,r:9,s:74&tx=54&ty=51](http://www.google.com/imgres?um=1&hl=en&biw=1015&bih=504&tbn=isch&tbnid=DArjx0Q9GRmz6M:&imgrefurl=http://www.zazzle.com/rockland_county_route_20_ny_sticker-217799316750176289&docid=sPiNq71tFwCWPM&imgurl=http://rly.zcache.com/rockland_county_route_20_ny_sticker-p217799316750176289z85xz_400.jpg&w=400&h=400&ei=eeFTT7f8M_Pq0QG1oKDvDQ&zoom=1&iact=rc&dur=300&sig=112078576386158500218&page=6&tbnh=149&tbnw=133&start=74&ndsp=14&ved=1t:429,r:9,s:74&tx=54&ty=51)
- [http://www.google.com/imgres?um=1&hl=en&biw=1015&bih=504&tbn=isch&tbnid=DArjx0Q9GRmz6M:&imgrefurl=http://www.zazzle.com/rockland\\_county\\_route\\_20\\_ny\\_sticker-217799316750176289&docid=sPiNq71tFwCWPM&imgurl=http://rly.zcache.com/rockland\\_county\\_route\\_20\\_ny\\_sticker-p217799316750176289z85xz\\_400.jpg&w=400&h=400&ei=eeFTT7f8M\\_Pq0QG1oKDvDQ&zoom=1&iact=rc&dur=300&sig=112078576386158500218&page=6&tbnh=149&tbnw=133&start=74&ndsp=14&ved=1t:429,r:9,s:74&tx=54&ty=51](http://www.google.com/imgres?um=1&hl=en&biw=1015&bih=504&tbn=isch&tbnid=DArjx0Q9GRmz6M:&imgrefurl=http://www.zazzle.com/rockland_county_route_20_ny_sticker-217799316750176289&docid=sPiNq71tFwCWPM&imgurl=http://rly.zcache.com/rockland_county_route_20_ny_sticker-p217799316750176289z85xz_400.jpg&w=400&h=400&ei=eeFTT7f8M_Pq0QG1oKDvDQ&zoom=1&iact=rc&dur=300&sig=112078576386158500218&page=6&tbnh=149&tbnw=133&start=74&ndsp=14&ved=1t:429,r:9,s:74&tx=54&ty=51)
- [http://www.google.com/imgres?um=1&hl=en&biw=1015&bih=504&tbn=isch&tbnid=t-9yOK4R\\_CGW5M:&imgrefurl=http://www.co.rockland.ny.us/Executive/Default.html&docid=gXj2V7SyKu3ocM&imgurl=http://www.co.rockland.ny.us/Executive/html2/images/RC\\_CE\\_Banner-Seal.gif&w=1111&h=1123&ei=pONTT-rmF\\_S10QG2n9G0DQ&zoom=1&iact=rc&dur=385&sig=112078576386158500218&page=3&tbnh=152&tbnw=150&start=24&ndsp=13&ved=1t:429,r:8,s:24&tx=75&ty=60](http://www.google.com/imgres?um=1&hl=en&biw=1015&bih=504&tbn=isch&tbnid=t-9yOK4R_CGW5M:&imgrefurl=http://www.co.rockland.ny.us/Executive/Default.html&docid=gXj2V7SyKu3ocM&imgurl=http://www.co.rockland.ny.us/Executive/html2/images/RC_CE_Banner-Seal.gif&w=1111&h=1123&ei=pONTT-rmF_S10QG2n9G0DQ&zoom=1&iact=rc&dur=385&sig=112078576386158500218&page=3&tbnh=152&tbnw=150&start=24&ndsp=13&ved=1t:429,r:8,s:24&tx=75&ty=60)
- [http://www.google.com/imgres?um=1&hl=en&biw=1015&bih=504&tbn=isch&tbnid=ImMmikUep8bnMM:&imgrefurl=http://www.scenichudson.org/parks/clusland&docid=AuEiGTm38DPofM&imgurl=http://www.scenichudson.org/files/u1/clusland\\_450.jpg&w=450&h=325&ei=pONTT-rmF\\_S10QG2n9G0DQ&zoom=1&iact=hc&vpx=503&vpy=151&dur=4259&hovh=191&hovw=264&tx=111&ty=133&sig=112078576386158500218&page=1&tbnh=137&tbnw=214&start=0&ndsp=9&ved=1t:429,r:2,s:0](http://www.google.com/imgres?um=1&hl=en&biw=1015&bih=504&tbn=isch&tbnid=ImMmikUep8bnMM:&imgrefurl=http://www.scenichudson.org/parks/clusland&docid=AuEiGTm38DPofM&imgurl=http://www.scenichudson.org/files/u1/clusland_450.jpg&w=450&h=325&ei=pONTT-rmF_S10QG2n9G0DQ&zoom=1&iact=hc&vpx=503&vpy=151&dur=4259&hovh=191&hovw=264&tx=111&ty=133&sig=112078576386158500218&page=1&tbnh=137&tbnw=214&start=0&ndsp=9&ved=1t:429,r:2,s:0)