

**“Life looks good from here”**





# **TABLE OF CONTENTS**

**Thesis**

**History of the County-  
Cara Marsicano**

**Key Sites- Kylee  
McIntosh**

**Interpretative Signs-  
Casey Dulin**

**Highway Signs- Gina  
Benson**

**Demographics- Demi  
Pappas**

**County Websites-Cara  
Marsicano**

**Lesson Plan-Demi  
Pappas**

**Final Project Approach**

**Works Cited**

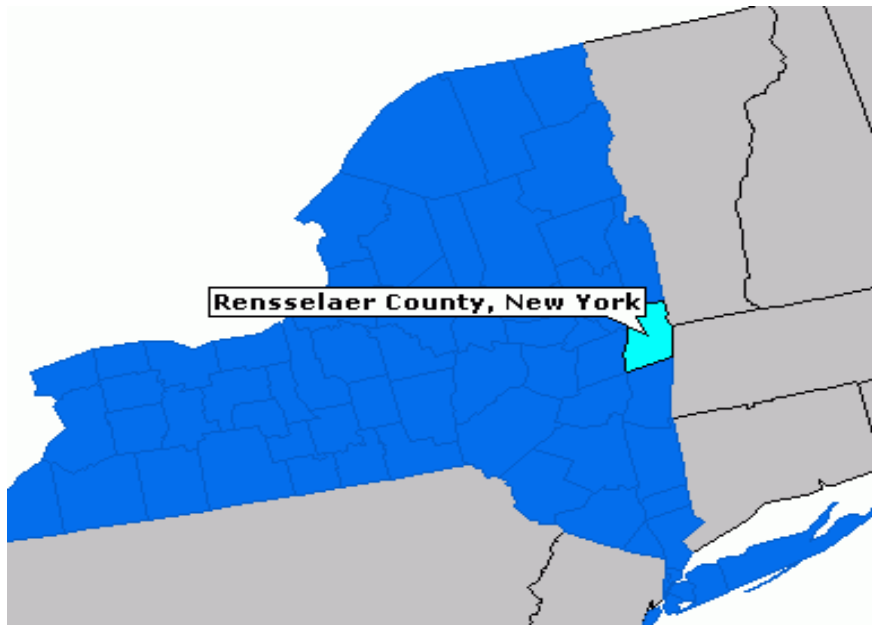
# THESIS

**Rensselaer County has a large industrial and cultural background, thus creating a region that has been advantageous throughout history as well as a rousing place to visit.**

**<http://www.youtube.com/watch?v=ndK1ecJz5LQ>**

# **HISTORY OF RENSSELAER COUNTY**

# RENSSELAER COUNTY



# THE START...

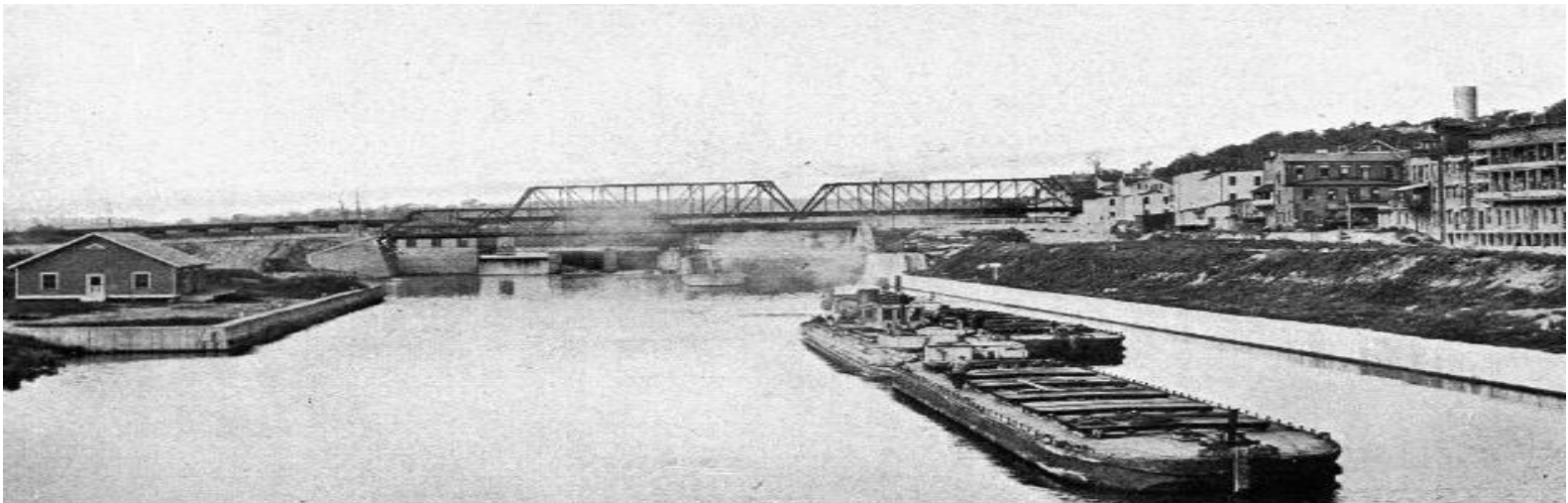
- Rensselaer County was founded on July 27<sup>th</sup>, 1630 by Kiliaen van Rensselaer: A Dutchman who worked as jeweler and merchant, and worked as a subscribers to the Dutch West India Company.
- Rensselaer County was established where the Adirondacks and the Berkshires meet, heading up towards the eastern boundaries of New York-Vermont and New York-Massachusetts



Kiliaen Van Rensselaer

# DEVELOPMENT

- Became a great cross route, because it was the start for the center of commerce and trade along the eastern and western border.
- The Hudson was located on the western side of the county but in route, which helped the explorer arrived.
- Man made other paths to these waterways. To and from the west in the Barge Canal; its outlet being in this county.
- The Indians had their trails from the north and east through Rensselaer; their place is taken by the best of modern railroads and highways





# IMPORTANT FACTS

- The Battle of Bennington, was fought in Rensselaer County, and led to the defeat of Burgoyne at Saratoga
- When land was first settled, it was under a lease contract throughout the Hudson and parts of Albany which made it difficult for rent to be collected.
- Besides the collection of rent, there were other inconveniences. Rensselaer county did not provide stores in the area until 1778.



# **HISTORICAL, CULTURAL AND INDUSTRIAL SITES IN RENSSELAER COUNTY**

# BENNINGTON BATTLEFIELD

**History:** A battle that was part of the Revolutionary War. . This battle was fought in August 1777 in a British effort to capture American storehouses in Bennington to restock their depleting provisions

**Activities:** Hiking: 5/29-9/6, daily.  
Interpretive panels: 10 am - 7 pm

**Address:** Grafton Lakes State Park  
Grafton, NY 12082

**Contact:** Phone: (518) 686-7109

**Additional Info:** <http://nysparks.com/historic-sites/12/details.aspx>



# **FORT CRAILO**

**History:** The Crailo State Historic Site is the home of the Hendrick Van Rensselaer family. As early as 1663, the estate had a little fort for the protection of the local inhabitants from marauding Indians fort. It was also used in the French-Indian war and the Revolution War. “Yankee Doodle” was written here in 1758

**Activities:** Tours on the hour – first tour at 11:00AM, last tour at 4:00PM.

**Group Tours:** School, camp, and adult tours by appointment year round.

**Address:** 9 1/2 Riverside Avenue  
Rensselaer, NY 12144

**Contact:** (518) 463-8738

**Additional Info:** <http://nysparks.com/historic-sites/30/details.aspx>

# BURDEN IRON WORKS



**History:** The Burden Iron Works was an iron works and industrial complex on the Hudson River and Wynantskill Creek in Troy, New York. It once housed the Burden Water Wheel, the most powerful vertical water wheel in history.

**Activities:** The museum is open for tours by appointment only.

**Address:** One East Industrial Parkway  
Troy, NY 12180

**Additional Info:** <http://allobanbany.com/archive/2009/07/13/the-burden-ironworks-museum>





# **GOOLD ORCHARD**

**History:** As well as industry, agriculture was very important to the county as well and this is apparent in the abundance of farms, orchards and wineries.

**Activities:** Goold Orchards, Castleton, NY invites pre-school, daycare, and elementary school age children to see first hand how apples are harvested from the trees. Learn how apples get from our beautiful apple orchard to the supermarket. **Closed:** Thanksgiving Day, Christmas Day, New Year's Day, and July 4th .

**OPEN 6 Days~9:00 a.m.-5:00 p.m.**

**Address:** 1297 Brookview Station Road, Castleton on Hudson , NY 12033

**Contact: Phone:** 518-732-7317

**Additional Info:** <http://www.goold.com/>

# **DYKEN POND**

**History:** The pond and the surrounding area provided food, wood and other necessities for living.

**Activities:** The Dyken Pond Environmental Education Center is a Rensselaer County Park located in Grafton, New York. Open during daylight hours, the park features over 6 miles of trails for hiking, geo-caching, and bird watching, with a launch for non-motorized boats, and areas on the shoreline for great fishing.

There are various activities that are available for the youth including nature discovery, amazing animals, outdoor living skills and so much more.

**Address:** 475 Dyken Pond Road Cropseyville, New York 12052

**Contact:** 518) 658-2055

**Additional Info:** <http://dykenpond.org/>



# **KNICKERBOCKER MANSION**

**History:** The Knickerbocker Mansion was built in the 1780's by Johannes and Elizabeth Knickerbocker. Its architecture is a rare middle age style. The Mansion presides over the remains of the historic Witenagenot Oak Tree which was planted in 1676 to commemorate a peace treaty between the Native Americans and European settlers

**Activities:** The Mansion is open for tours from May-October on Sundays from 11 AM to 3 PM, for special events and by appointment for group tours and authentic colonial Dutch meals.

**Address:** 132 Knickerbocker Road Schaghticoke, NY 12154

**Contact:** (518) 664-1700

**Additional Information:**

**<http://www.renscotourism.com/Details.aspx?sid=61e10489-7f89-4151-82a5-1cf181bdbe0c>**



# **INTERPRETATIVE SIGNS**

# Knickerbocker Mansion



- Historic log mansion stands proudly today as a reminder of the amazing William Edwin Knickerbocker
- All Knickerbocker guests are welcome to share in the warmth and fun atmosphere of the living room of the main house.
  - Enjoy the extensive library, games and jigsaw puzzles, or relax on one of two covered verandas with forest and lake views. Outside activities include croquet on the lawn, a hike through the forest, or an afternoon nap in a hammock for two.

# Fort Crailo



Location: Rensselaer, New York

- Home to American soldiers during the American Revolution
- Farm and fort used to protect Americans from British and Indians.



Location: Grafton, New York  
Grafton Lake State Park

- Hosted a battle during August 1777 in the Revolutionary War.
- British lost many men and the battle.

## Bennington Battlefield





Location: East Greenbush

- Here on 300 acre Greenbush Cantonment, headquarters of the US Army of the North, trained as many as 5000 troops for the War of 1812.
- The Cantonment construction started May 1812 and contained accommodations for 4000 troops and a 100 bed hospital.

LANDS OF WILLIAM P.  
VAN RENSSLAER

151

STONE  
QUARRY

SITE OF THE  
THREE TREES

MT. MADISON  
SO CALLED

8. POWDER MAGAZINE  
9. LABORATORY

LANDS OF  
SOLOMON  
CONE

10. ARSENAL  
11. STOREHOUSE

HILLSIDE  
PATH

PINEHURST

HAMPTON

MADISON

PARADE GROUND

MCCULLOUGH

RED MILL  
SCHOOL

GRAND PARADE

19. FARRIERS  
SHOP  
20. HORSE  
STABLE

# THE GREENBUSH U. S. CANTONMENT

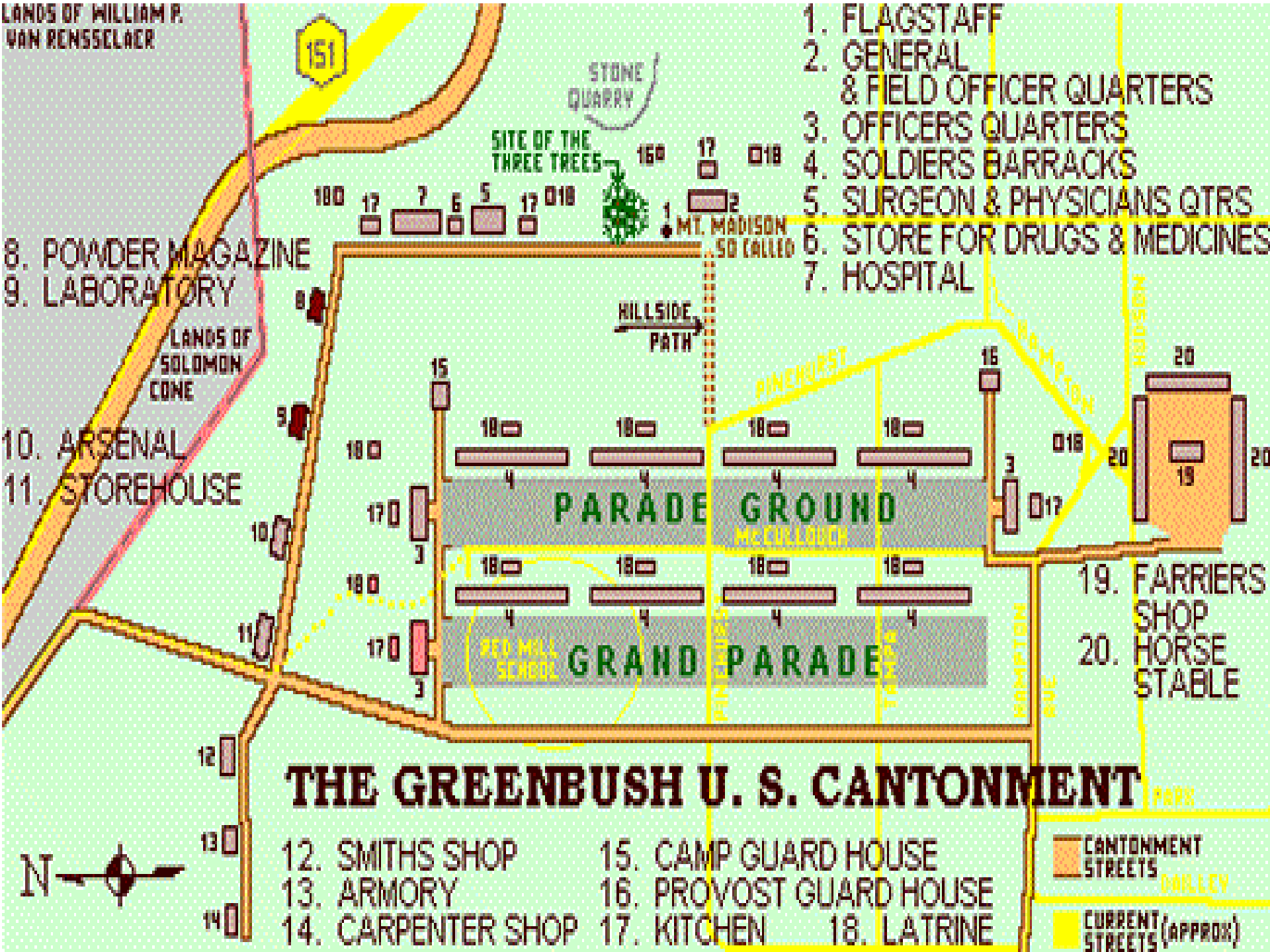


- |                    |                         |
|--------------------|-------------------------|
| 12. SMITHS SHOP    | 15. CAMP GUARD HOUSE    |
| 13. ARMORY         | 16. PROVOST GUARD HOUSE |
| 14. CARPENTER SHOP | 17. KITCHEN             |
|                    | 18. LATRINE             |

CANTONMENT  
STREETS

CURRENT  
STREETS (APPROX)

1. FLAGSTAFF
2. GENERAL  
& FIELD OFFICER QUARTERS
3. OFFICERS QUARTERS
4. SOLDIERS BARRACKS
5. SURGEON & PHYSICIANS QTRS
6. STORE FOR DRUGS & MEDICINES
7. HOSPITAL





# Garfield School

- Location: Brunswick, New York
- Also known as Brunswick District No. 2 School
- Was said to be an ornament to the Town of Brunswick
- Built in 1881 by Joachim Fileau
- The Garfield School is considered one of the most unusual 19th century rural schoolhouses in the Capital District

# **HIGHWAY MARKERS**



Garfield School

**DIST. 2 SCHOOL**  
1-ROOM C. 1840-81  
NAMED FOR JAMES A. GARFIELD  
WHO TAUGHT HERE 1854-56  
WHILE A STUDENT  
AT WILLIAMS COLLEGE

**DIST. 7 SCHOOL**  
ON GYPSY LANE C. 1829-30  
'SCHOOLHOUSE IN THE WOODS'  
HERMAN MELVILLE TAUGHT 1840  
LAND GIVEN 1829 BY  
ABRAHAM JACOB LANSING



**DISTRICT NO. 6**  
C. 1830 BRICK SCHOOL BUILT  
ON LAND GRANTED BY  
LUTHER AND OLIVE EDDY,  
LATER NAMED THE  
LINCOLN SCHOOL BY STUDENTS



District No. #

This school is known for (ex:  
1-room school. Built in 1840.

Named after James A.  
Garfield, a teacher from 1854-  
56)  
2 mi.

# 1812 CANTONMENT

HERE ON 300 ACRE GREENBUSH  
CANTONMENT, HEADQUARTERS  
OF U.S. ARMY OF THE NORTH,  
TRAINED AS MANY AS 5000  
TROOPS FOR THE WAR OF 1812

EAST GREENBUSH BICENTENAL COMMISSION

ERECTED  
JULY 4, 1977

1812 Cantonment

Headquarters of  
U.S. Army of the  
North,  
5,000 troops  
trained here.



GREENBUSH CANTONMENT

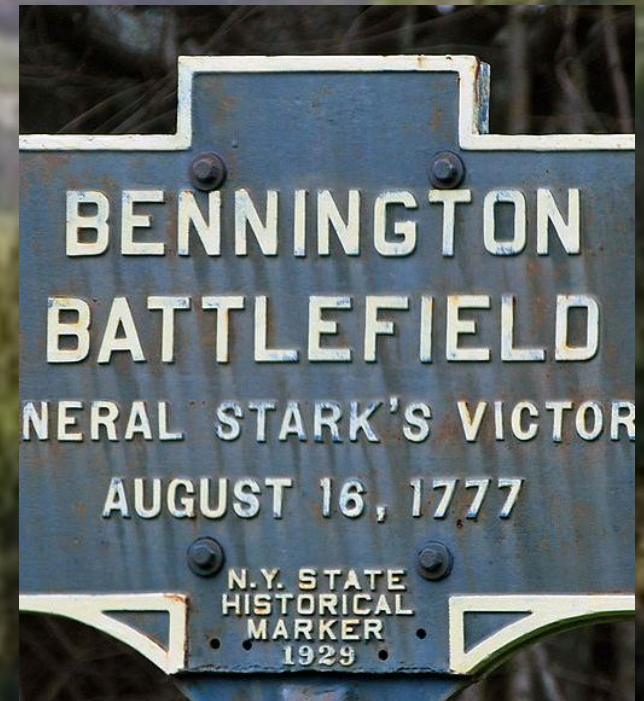


## Bennington Battlefield

BENNINGTON  
BATTLEFIELD

Here, General  
Stark's Victory

August 16, 1777



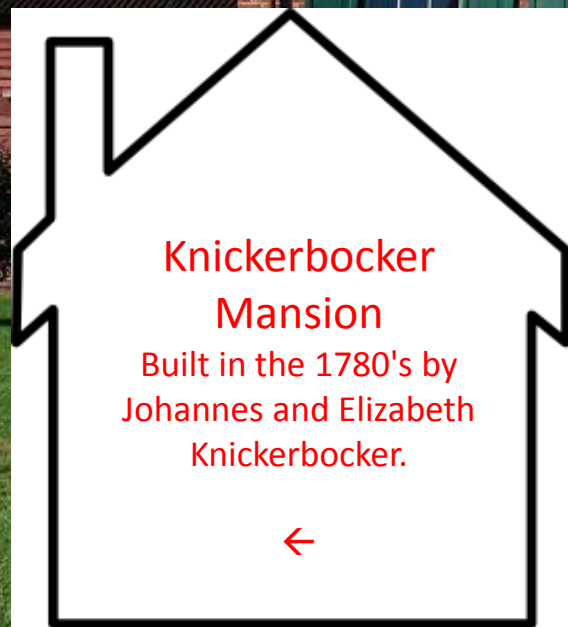
# FORT CRAILO

## FORT CRAILO

"Yankee Doodle" was  
written here in 1758.







## Knickerbocker Mansion

Built in the 1780's by  
Johannes and Elizabeth  
Knickerbocker.



# **DEMOGRAPHICS OF RENSSELAER COUNTY**

# *Population of Rensselaer County by* **race**

Race	1860	2010
White (includes Indians)	85,270	140,335
African American	727	7,943
Mulatto	331	1,839
✧ Total	✧ 86,328	✧ 158,629



# ***Population of Rensselaer County by***

## ***sex***

Sex	1860	2010
Male	41,870	78,169
Female	43,367	80,460

# ***Population of Rensselaer County by Housing Units***

	1860	2010
Housing Units	70,891	78,169

# Occupations in Rensselaer County

## 1860

Farmers, farm laborers, tailors, merchants, laborers, carpenters, shoemakers, blacksmiths, and clerks.

## 2010

OCCUPATION	
Civilian employed population 16 years and over	80,598
Management, business, science, and arts occupations	30,075
Service occupations	12,597
Sales and office occupations	22,781
Natural resources, construction, and maintenance occupations	6,950
Production, transportation, and material moving occupations	8,195

# WEBSITES

- [Welcome to Rensselaer County](#): here you will find all the important involving the community, the press and political views.
- [Lifes good from here](#): Here you will find all of the county's economic development and planning.
- [History is Here](#): here is a perfect site to visit if you are interested in seeing what Rensselaer County has to offer.



# LESSON PLAN



**Overview before the trip:** Students will learn that agriculture was very important to Rensselaer County, which was seen through the many farms, and orchards. Students will discover agriculture in Rensselaer County, and learn how climate and environmental factors affect agriculture. Students will be broken up into groups, and each group will pretend they are farmers, and research the weather and environmental factors they would need to consider in order to successfully run their farms (Ex: drought).

**Overview during the trip:** On their field trip to Goold Orchard the next day, students will investigate what type of factors affected the apples and other fruit (Ex: bugs). Students must pay attention to the tour guide, as he or she will explain how the farmers of the orchard handle the environmental factors in order to grow the crops effectively (Ex: pesticides). Students will take notes on their trip, and use the knowledge they have gained to complete their report for the following day's lesson. Students are allowed to pick their own apples, and other fruit, which they can examine further to determine what kind of factors have affected them.

**Overview after the trip:** Students will write a report on all of the information they have learned in the past two days. They must write a report on what environmental factors they need to take into consideration, and what they would do if they had to face these factors on their farms. Students must also create a poster, where they have drawn a picture of their farms, including what factors they have researched and learned solutions to on their field trip. For example, students may choose to write about droughts, and how sprinklers may be used to water crops. Students will draw a picture of a farm with sprinklers, and maybe draw a picture of a sun to indicate that it is a hot dry day.

# LESSON PLAN CONTINUED



**Closing Activity:** The teacher and students can have a discussion on how farmers would sell their crops to make a profit, and how their jobs depended upon the environment. Students can think about how much they would sell the crops on their farms for depending upon what environmental factor they have researched, and share their ideas in a class discussion.

**Extension Activity:** The teacher can distribute seeds to students and teach them how to grow their own plants. Having students actually attempt to grow their own plants will show them how hard it can be for farmers to grow plants for a living, because so many factors are taken into consideration.

**New York State Standards:** Social Studies 1-History of the United States and New York: use a variety of intellectual skills to demonstrate their understanding of major ideas, eras, themes, developments, and turning points in the history of the United States and New York. English Language Arts Learning 1-Students will read, write, listen, and speak for information and understanding. English Language Arts Learning 4-Students will read, write, listen, and speak for social interaction.

**Learning Intelligences:** Auditory learning- Students will be listening to their group members' ideas, and other group's presentations at the end of the lesson. They will also be participating in a group discussion at the end of the lesson. Verbal linguistic- Students will discuss the report with their group members, and be required to ask the tour guide on the field trip numerous questions. Bodily-kinesthetic- Students will be involved in the lesson with hands on activities such as picking their own fruit, and creating posters.

# **FINAL PROJECT APPROACH**

**Cara- Website Links**

**Kylee-Guided pages for  
heritage tourists**

**Casey- Wayside exhibit panels**

**Gina-Highway route markers**

**Demi- Lesson Plan**

# WORKS CITED

"Â ." *Cherry Plain State Park*. Web. 02 May 2012. <<http://nysparks.com/parks/173/details.aspx>>. Used for the itinerary to find out activities and address.

"Â ." *Crailo State Historic Site*. Web. 02 May 2012. <<http://nysparks.com/historic-sites/30/details.aspx>>. Used for the itinerary to find out activities and the address.

Baker Anderson, George. "History of Brunswick, New York." *History Files at Rays-place.com*. D. Mason & CO. Publishers, Syracuse, NY 1897. Web. 02 Mar. 2012. <<http://history.rays-place.com/ny/ren-brunswick-ny.htm>>. This website was used in order to find historical sites as well as for history.

"Battle of Bennington." *Wikipedia*. Wikimedia Foundation, 03 Apr. 2012. Web. 04 Mar. 2012. <[http://en.wikipedia.org/wiki/Battle\\_of\\_Bennington](http://en.wikipedia.org/wiki/Battle_of_Bennington)>. This website was used to understand the importance of the battle that took place in Rensselaer County.

"Bennington Vermont, Old Bennington Walking Tour - Bennington Museum." *Bennington Vermont, Old Bennington Walking Tour - Bennington Museum*. Web. 09 May 2012. <<http://www.bennington.com/chamber/walking/monumentdescription.html>>. This website spilled out a ton of information about Bennington Battlefield. You can go on walking tours here and also learn about all the history. It was built in the late 1880's. This battle took place during the Revolutionary war in 1777. In 1877, a local historical society was formed and they started planning the monument.

"The Captain J.P. Cruise Line." *The Captain J.P. Cruise Line*. Web. 02 May 2012. <<http://www.captainjp.com/>>. Used for itinerary to find the address, the type of cuisine and how to go about making reservations.

"Census of Population and Housing." *1860 Census*. United States Census Bureau, 22 Dec. 2011. Web. 4 Mar. 2012. <<http://www.census.gov/www/html>>. This source was valuable in helping me discover demographics of Rensselaer County in 2010 and 1860. In particular, it had information regarding race, sex, and housing units for both 1860 and 2010, however it only had information regarding occupations for 2010. This provided the exact information that I needed to complete my portion of the presentation regarding demographics.

"Fort Crailo." *301 Moved Permanently*. Web. 29 Feb. 2012. <[http://dmna.ny.gov/forts/fortsA\\_D/crailoFort.htm](http://dmna.ny.gov/forts/fortsA_D/crailoFort.htm)>. Used to find the site Fort Crailo, it provided information for the highway marker.

"Garfield School." *Garfield School*. Web. 09 May 2012. <<http://www.townofbrunswick.org/history/garfield.asp>>. The Garfield School was very interesting to learn about. I found out when it was built and by whom on this website. This school district served School District #2 for about 80 years. The restoration and adaptive reuse of the Garfield School has earned the recognition of the Preservation League of New York State.



# WORKS CITED

## CONTINUED

*Goold Orchards*. N.p., n.d. Web. 7 May 2012. <<http://www.goold.com/>>The website for Goold Orchards helped me discover what type of activities individuals could participate in when visiting. In particular, I searched for what children could do so that I could make a successful lesson plan for my students. I discovered that there are tour guides which take students through the Orchard and teach them about agriculture and how the crops are grown, and what climate effects them. From this information, I decided to make a lesson plan on agriculture, since it was so important to Rensselaer County. I believe the field trip to Goold Orchards would be extremely beneficial for students to see first-hand how crops are grown.

"Greenbush Cantonment." *Greenbush Cantonment*. Web. 09 May 2012. <[http://dmna.ny.gov/forts/fortsE\\_L/greenbushCantonment.htm](http://dmna.ny.gov/forts/fortsE_L/greenbushCantonment.htm)>. This website was very useful. It had a lot of helpful information about the Greenbush Cantonment. It spoke about what the place was made of (how many rooms, how big, what each room had in each, how many barracks, etc). The one Officer Barracks still remains standing and the Red Mill School occupies the former grand parade grounds. Also, on this website it had a map of the Cantonment. The map labeled each part of it and told you what it was. It also had other visuals such as the place itself and signs that are there.

"Hender'Son's Bar & Grill." *Hender'Son's Bar & Grill*. Web. 02 May 2012. <<http://www.hender-son-s.com/>>. Used for the itinerary, menu and address.

"Historic Barns of Nipmoose." *Historic Barns of Nipmoose*. Web. 02 May 2012. <<http://www.nipmoosebarns.org/>>. Used for the itinerary, activities, events and the address.

"Home Page." *Knickmansion*. Web. 02 May 2012. <<http://www.knickmansion.com/>>. Used for the itinerary to get the address and activities.

"The Hudson." *Bath-On-Hudson (Rensselaer, NY)*. Web.

"Jimmy Casey's Restaurant." *Jimmy Casey's Restaurant*. Web. 02 May 2012. <<http://jimmycaseys.com/>>. Used for itinerary the menu and the address.

"NYS P-12 Common Core Learning Standards." *NYSED.gov*. N.p., 23 Oct. 2009. Web. 7 May 2012. <<http://www.p12.nysed.gov/>>. On this website, I found the New York State Learning Standards for Social Studies, which is necessary to include when creating a lesson plan. In order for a lesson plan to be beneficial to students, it must cover learning standards for the particular subject, and from this website I found learning standards that were associated with my lesson plan.

*Nysm.nysed.gov*. Web. 29 Feb. 2012. <<http://www.nysm.nysed.gov/historicmarkers/hisaction.cfm>>. The site was very helpful in finding historical markers that were already in place.

"Old Mount Ida Cemetery - Troy, NY - Worldwide Cemeteries on Waymarking.com." *Old Mount Ida Cemetery - Troy, NY - Worldwide Cemeteries on Waymarking.com*. Web. 09 May 2012. <[http://www.waymarking.com/waymarks/WM5KCG\\_Old\\_Mount\\_Ida\\_Cemetery\\_Troy\\_NY](http://www.waymarking.com/waymarks/WM5KCG_Old_Mount_Ida_Cemetery_Troy_NY)>. I had a hard time finding useful and factual information on Mount Ida Cemetery but this website gave me a lot of help. It told me about other names for this cemetery and let me know that it no longer exists and was completely vandalized ~~and destroyed~~. Also, this cemetery has many signs that give information that they had pictures of on the website.

# WORK CITED

## CONTINUED

"Olde Judge Mansion." - *Historic Bed and Breakfast in Troy, New York*. Web. 02 May 2012. <<http://oldejudgetmansion.com/>>. Used for itinerary this is where the tourists would stay. It provided address and nearby locations.

"Poestenkill Falls - Waterfalls of the Northeastern United States." *Waterfalls of the Northeastern United States*. Web. 02 May 2012. <<http://www.northeastwaterfalls.com/waterfall.php?num=1064>>. Used for itinerary to find the address and for pictures.

*Profile for Rensselaer County, New York, NY*. Photograph *Rensselaer County, New York County Information*. Epondunk - the Power of Place, 2007. Web. 04 Mar. 2012. <<http://www.epodunk.com/cgi-bin/genInfo.php?locIndex=22497>>. This website was used to have a picturesque view of Rensselaer County.

*Rensselaer County Census Records*. New York American Local History Network, n.d. Web. 9 May 2012. <<http://www.rootsweb.ancestry.com/~nyrenss2/>>. On this website, I discovered what occupations citizens in Rensselaer County participated in. While it did not have specific numbers regarding how many individuals participated in which occupation, I did find out valuable information. Some occupations were farmers, farm laborers, tailors, merchants, laborers, carpenters, shoemakers, blacksmiths, and clerks.

"Rensselaer County, New York." *Wikipedia*. Wikimedia Foundation, 05 Sept. 2012. Web. 09 May 2012. <[http://en.wikipedia.org/wiki/Rensselaer\\_County,\\_New\\_York](http://en.wikipedia.org/wiki/Rensselaer_County,_New_York)>. Although this website was Wikipedia it had very good information for me to understand more about Rensselaer County. The population as of 2010 census was 159,429. It had helpful pictures and facts all throughout the website that helped me on other parts of this project. There are 14 towns and 6 villages.

Rittner, Don. "Knickerbocker Mansion A Must Visit." *Blog. Time Union*. Don Rittner, May 2009. Web. This website was used to have a clearer understanding of the resources and economical efforts used in Rensselaer County.

*Tps.cr.nps.gov*. Web. 29 Feb. 2012. <<http://tps.cr.nps.gov/nhl/detail.cfm?ResourceId=407&ResourceType=Site>>. This site was helpful in finding historical site and highway marker information.

"Troy Savings Bank Music Hall." *Troy Savings Bank Music Hall*. Web. 02 May 2012. <<http://www.troymusichall.org/>>. Used for the itinerary in order to find the address and different events.

"Welcome." Web. 02 May 2012. <<http://www.famouslunch.org/Welcome.html>>. Used this in my itinerary to find the address and menu.

Whiteford, Noble E. "Hudson." *History.rochester*. Bill Carr, 8 Dec. 1999. Web. This website is just a broad understanding of how the Hudson has impacted Rensselaer County